

MMIC Test Boards: Instructions for Use

(AN-60-036)

1.0 Introduction

Mini Circuits manufacture a wide range of 4-pin MMIC surface-mount and drop-in amplifiers. Family of test boards, for evaluating these devices, has been designed as to make them easy to use by customer.

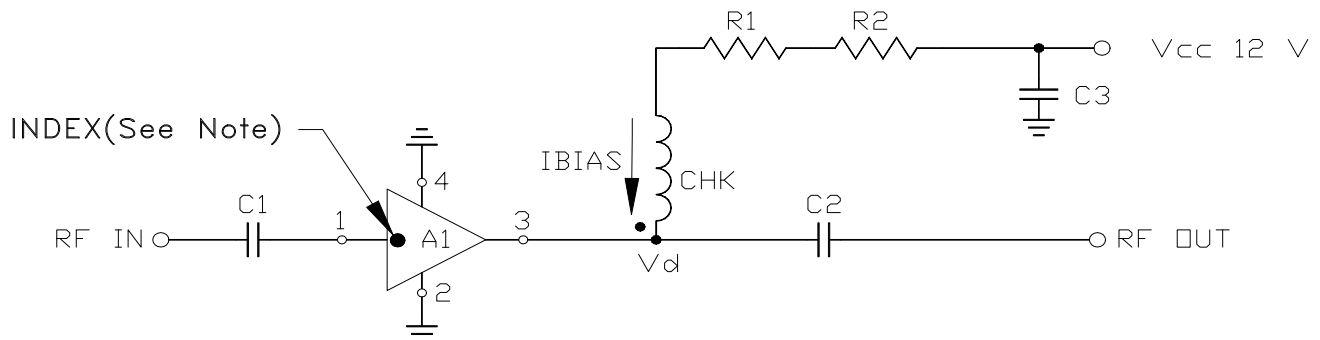
On the board, all components external to the amplifier, such as bias resistors, DC blocking and bypass capacitors, RF choke, together with the amplifier have been placed and soldered onto the Test Board. In this board, measured performance of the device under test is affected by these external components. Tables in §3 shows the loss of test board. Add the values given in §3 for respective models to the measured gain to get actual amplifier gain.

2.0 General Schematics:

MMIC amplifiers have different device voltages and operating currents. This test board has been configured to use a fixed supply voltage, 12V, irrespective of the amplifier. DC current flowing through the amplifier is set by suitable selection of bias resistors.

Table 1 Test Board components:

Component	Value	Function
C1,C2	2400 nF	DC blocking
L1	MCL Model TCCH-80A+	RF choke
R1	Depends on Model	Sets bias current
R2	Depends on Model	Sets bias current
C3	0.1 μ F	Bypass capacitor; Bypass noise of supply voltage
A1	Depends on Model	See Table



Note: Location of index depends on model

2.1 Procedure for using Test Board

Follow these steps to use the Test Board.

1. Calibrate the Network Analyzer.
2. First, connect the RF output port of the Test Board to the Network Analyzer.
3. Then, apply +12 V DC.
4. Finally, connect the RF input port of the Test Board to the Network Analyzer and apply RF input. Gain is now displayed on the Network Analyzer.

3.0 Test Board Loss

Frequency (GHz)	Insertion Loss (dB)
1	0.64
2	1.03
3	1.63
4	1.32
5	1.46
6	1.90
8	3.21

Table 2.1: Insertion Loss of Test Board for ERA, MAR, RAM, and GALI Amplifiers

Frequency (GHz)	Insertion Loss (dB)
1	0.68
2	1.15
3	1.63
4	1.46
5	1.72
6	2.18
8	2.78

Table 2.2: Insertion Loss of Test Board for LEE Amplifiers

Frequency (GHz)	Insertion Loss (dB)
0.1	0.43
0.5	0.5
1	0.59
2	0.79
4	0.92
6	1.78

Table 2.3: Insertion Loss of Test Board for MAV Amplifiers

4.0 Amplifier and Test Board Cross Reference

Amplifier	Test Board
ERA-1SM(+)	TB-408-1+
ERA-2SM(+)	TB-408-2+
ERA-21SM(+)	TB-408-21+
ERA-3SM(+)	TB-408-3+
ERA-33SM(+)	TB-408-33+
ERA-4SM(+)	TB-408-4+
ERA-5SM(+)	TB-408-5+
ERA-50SM(+)	TB-408-50+
ERA-51SM(+)	TB-408-51+
ERA-6SM(+)	TB-408-6+
ERA-8SM(+)	TB-408-8+
GALI-1+	TB-409-1+
GALI-19+	TB-409-19+
GALI-2+	TB-409-2+
GALI-21+	TB-409-21+
GALI-24+	TB-409-24+
GALI-29+	TB-409-29+
GALI-3+	TB-409-3+
GALI-33+	TB-409-33+
GALI-39+	TB-409-39+
GALI-4+	TB-409-4+
GALI-4F+	TB-409-4F+
GALI-49+	TB-409-49+
GALI-5+	TB-409-5+
GALI-5F+	TB-409-5F+
GALI-51+	TB-409-51+
GALI-51F+	TB-409-51F+
GALI-52+	TB-409-52+
GALI-55+	TB-409-55+
GALI-59+	TB-409-59+
GALI-6+	TB-409-6+
GALI-6F+	TB-409-6F+
GALI-74+	TB-409-74+
GALI-84+	TB-409-84+
MAR-1SM(+)	TB-411-1+
MAR-2SM(+)	TB-411-2+
MAR-3SM(+)	TB-411-3+
MAR-4SM(+)	TB-411-4+
MAR-6SM(+)	TB-411-6+
MAR-7SM(+)	TB-411-7+
MAR-8SM(+)	TB-411-8+
MAR-8ASM(+)	TB-411-8A+

Amplifier	Test Board
MAV-11SM(+)	TB-412-11+
MAV-11A(+)	TB-412-11A+
MAV-BSM(+)	TB-412-11B+
LEE-19+	TB-413-19+
LEE-29+	TB-413-29+
LEE-39+	TB-413-39+
LEE-49+	TB-413-49+
LEE-59+	TB-413-59+
RAM-1(+)	TB-414-1+
RAM-2(+)	TB-414-2+
RAM-3(+)	TB-414-3+
RAM-4(+)	TB-414-4+
RAM-6(+)	TB-414-6+
RAM-7(+)	TB-414-7+
RAM-8(+)	TB-414-8+
VAM-3(+)	TB-415-3+
VAM-6(+)	TB-415-6+
VAM-7(+)	TB-415-7+
ERA-1(+)	TB-431-1+
ERA-2(+)	TB-431-2+
ERA-3(+)	TB-431-3+
ERA-4(+)	TB-431-4+
ERA-5(+)	TB-431-5+
ERA-6(+)	TB-431-6+
MAR-1(+)	TB-432-1+
MAR-3(+)	TB-432-3+
MAR-4(+)	TB-432-4+
MAR-6(+)	TB-432-6+
MAR-8A(+)	TB-432-8A+

IMPORTANT NOTICE

© 2015 Mini-Circuits

This document is provided as an accommodation to Mini-Circuits customers in connection with Mini-Circuits parts only. In that regard, this document is for informational and guideline purposes only. Mini-Circuits assumes no responsibility for errors or omissions in this document or for any information contained herein.

Mini-Circuits may change this document or the Mini-Circuits parts referenced herein (collectively, the "Materials") from time to time, without notice. Mini-Circuits makes no commitment to update or correct any of the Materials, and Mini-Circuits shall have no responsibility whatsoever on account of any updates or corrections to the Materials or Mini-Circuits' failure to do so.

Mini-Circuits customers are solely responsible for the products, systems, and applications in which Mini-Circuits parts are incorporated or used. In that regard, customers are responsible for consulting with their own engineers and other appropriate professionals who are familiar with the specific products and systems into which Mini-Circuits' parts are to be incorporated or used so that the proper selection, installation/integration, use and safeguards are made. Accordingly, Mini-Circuits assumes no liability therefor.

In addition, your use of this document and the information contained herein is subject to Mini-Circuits' standard terms of use, which are available at Mini-Circuits' website at www.minicircuits.com/homepage/terms_of_use.html.

Mini-Circuits and the Mini-Circuits logo are registered trademarks of Scientific Components Corporation d/b/a Mini-Circuits. All other third-party trademarks are the property of their respective owners. A reference to any third-party trademark does not constitute or imply any endorsement, affiliation, sponsorship, or recommendation: (i) by Mini-Circuits of such third-party's products, services, processes, or other information; or (ii) by any such third-party of Mini-Circuits or its products, services, processes, or other information.