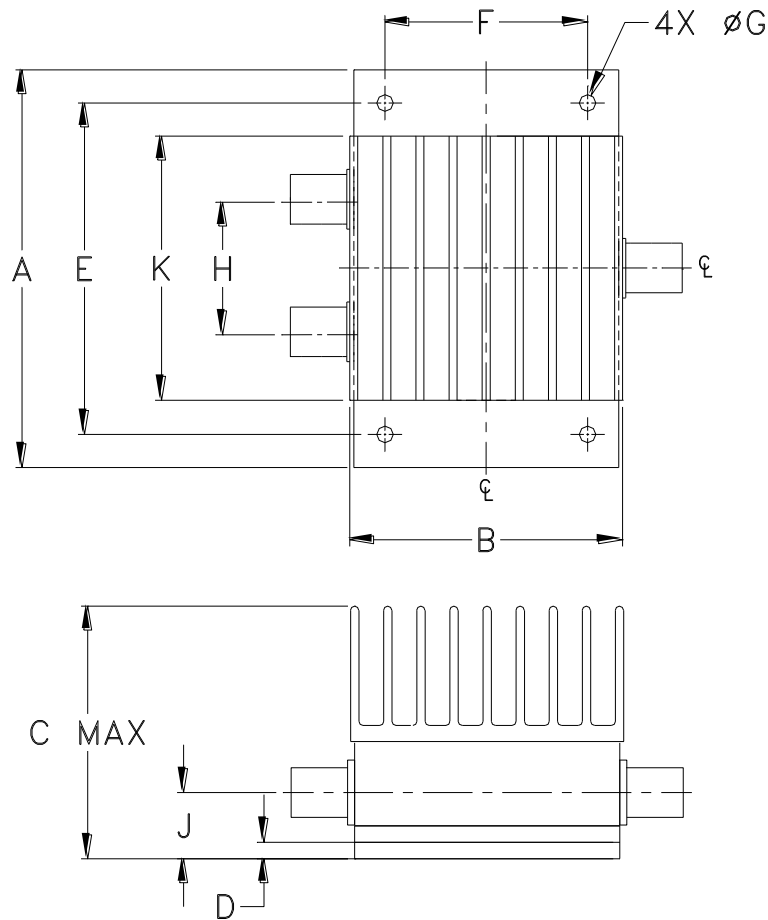


Outline Dimensions

AW254



CASE #	A	B	C	D	E	F	G	H	J	K	WT. GRAM
AW254	3.00 (76.20)	2.06 (52.32)	1.92 (48.77)	.100 (2.54)	2.500 (63.50)	1.525 (38.74)	.125 (3.18)	1.000 (25.40)	.50 (12.70)	2.00 (50.80)	330

Dimensions are in inches (mm). Tolerances: 2Pl. $\pm .03$; 3Pl. $\pm .015$

Notes:

1. Case material: Aluminum alloy.
2. Case Finish:
For RoHS Case Styles: Clear chemical conversion coating, non-chrome or trivalent chrome based.
3. Heat sink finish: Black anodize.



P.O. Box 350166, Brooklyn, New York 11235-0003 (718) 934-4500 Fax (718) 332-4661 For detailed performance specs & shopping online see Mini-Circuits web site



The Design Engineers Search Engine Provides ACTUAL Data Instantly From MINI-CIRCUITS At: www.minicircuits.com

RF/IF MICROWAVE COMPONENTS