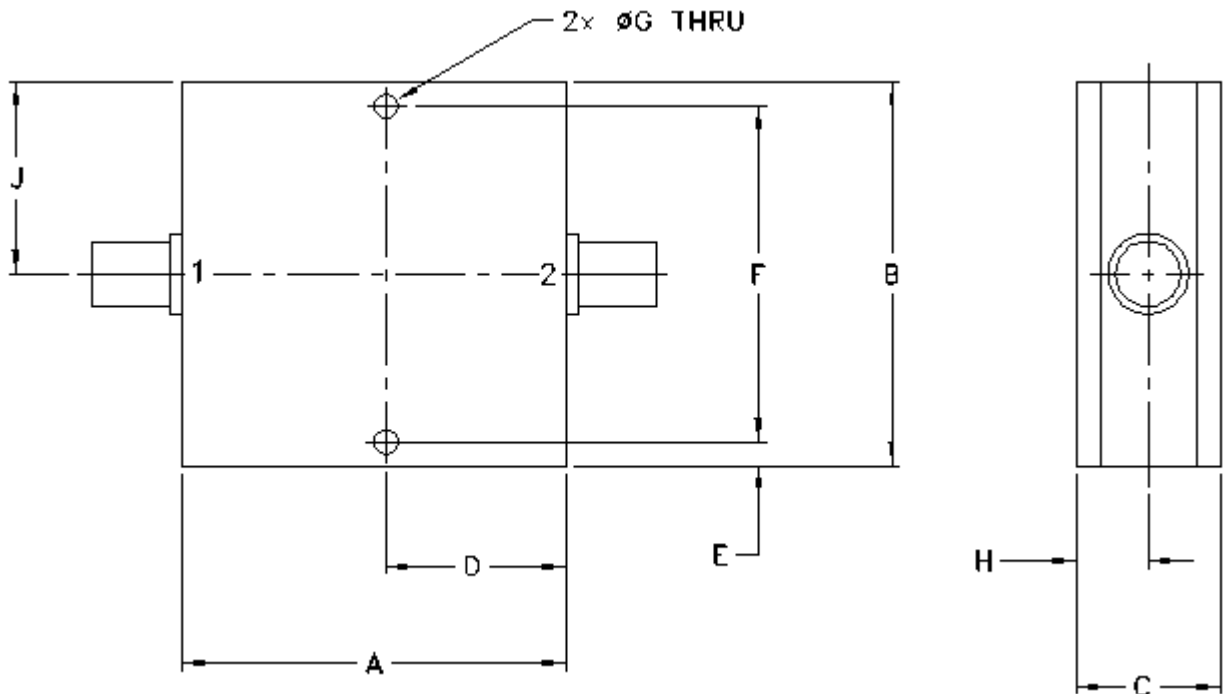


## Outline Dimensions

CC1397



CASE#	A	B	C	D	E	F	G	H	J	WT. GRAMS
CC1397	2.00 (50.80)	2.00 (50.80)	.75 (19.05)	.938 (23.83)	.13 (3.30)	1.750 (44.45)	.125 (3.17)	.38 (9.65)	1.00 (25.4)	100

Dimensions are in inches (mm). Tolerances: 2 Pl.  $\pm .03$ ; 3 Pl.  $\pm .015$

### Notes:

1. Case material: Aluminum alloy.
2. Case finish:  
For RoHS Case Styles: Clear chemical conversion coating, non-chrome or trivalent chrome based.
3. Refer to the individual model data sheet for the type of connectors available.



P.O. Box 350166, Brooklyn, New York 11235-0003 (718) 934-4500 Fax (718) 332-4661 For detailed performance specs & shopping online see Mini-Circuits web site



The Design Engineers Search Engine Provides ACTUAL Data Instantly From MINI-CIRCUITS At: [www.minicircuits.com](http://www.minicircuits.com)

RF/IF MICROWAVE COMPONENTS