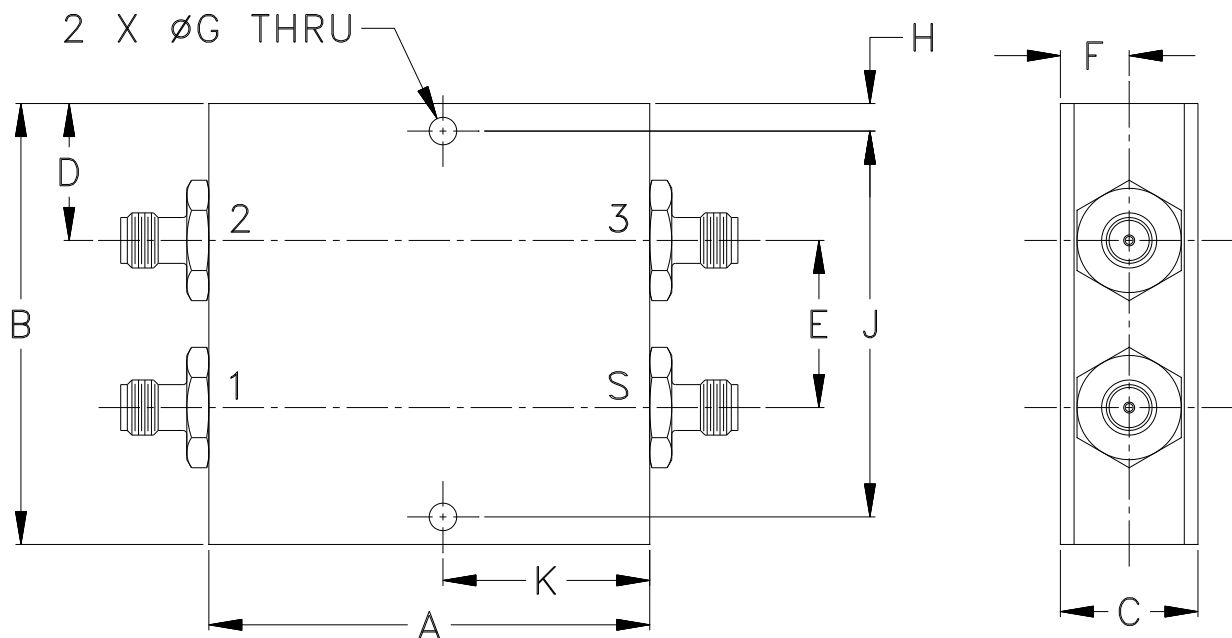


Outline Dimensions

CC1823



CASE#	A	B	C	D	E	F	G	H	J	K	WT. GRAMS
CC1823	2.000 (50.80)	2.000 (50.80)	0.624 (15.85)	0.621 (15.77)	0.758 (19.25)	0.312 (7.93)	0.125 (3.18)	0.125 (3.18)	1.750 (44.45)	0.938 (23.83)	99

Dimensions are in inches (mm). Tolerances: 2 Pl. $\pm .03$; 3 Pl. $\pm .015$

Notes:

- Case material: Aluminum alloy.
- Case finish:
For RoHS Case Styles: Clear chemical conversion coating, non-chrome or trivalent chrome based.
- Refer to the individual model data sheet for the type of connectors available.



P.O. Box 350166, Brooklyn, New York 11235-0003 (718) 934-4500 Fax (718) 332-4661 For detailed performance specs & shopping online see Mini-Circuits web site



The Design Engineers Search Engine Provides ACTUAL Data Instantly From MINI-CIRCUITS At: www.minicircuits.com

RF/IF MICROWAVE COMPONENTS