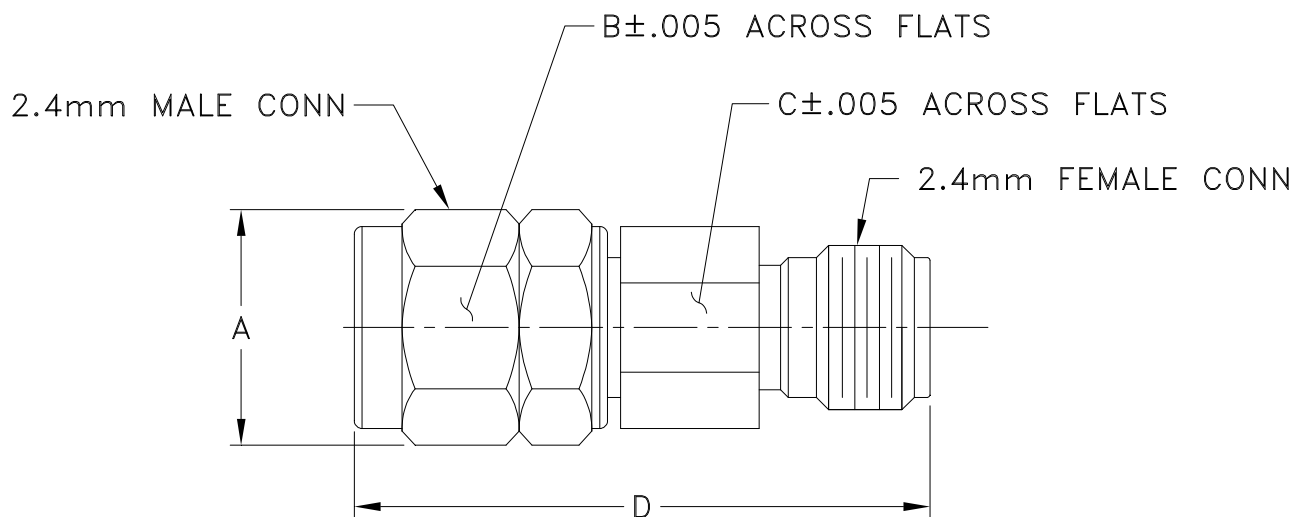


### Outline Dimensions



CASE #	A	B	C	D	E	WT. GRAM
DJ2264	.36 (9.14)	.312 (7.93)	.281 (7.14)	.871 (22.12)	-- --	5.44

Dimensions are in inches (mm). Tolerances: 2 Pl. ± .002; 3Pl. + .001

#### Notes:

1. Case material:Stainless Steel.
2. Finish: Passivation.



P.O. Box 350166, Brooklyn, New York 11235-0003 (718) 934-4500 Fax (718) 332-4661 For detailed performance specs & shopping online see Mini-Circuits web site



The Design Engineers Search Engine Provides ACTUAL Data Instantly From MINI-CIRCUITS At: [www.minicircuits.com](http://www.minicircuits.com)

RF/IF MICROWAVE COMPONENTS