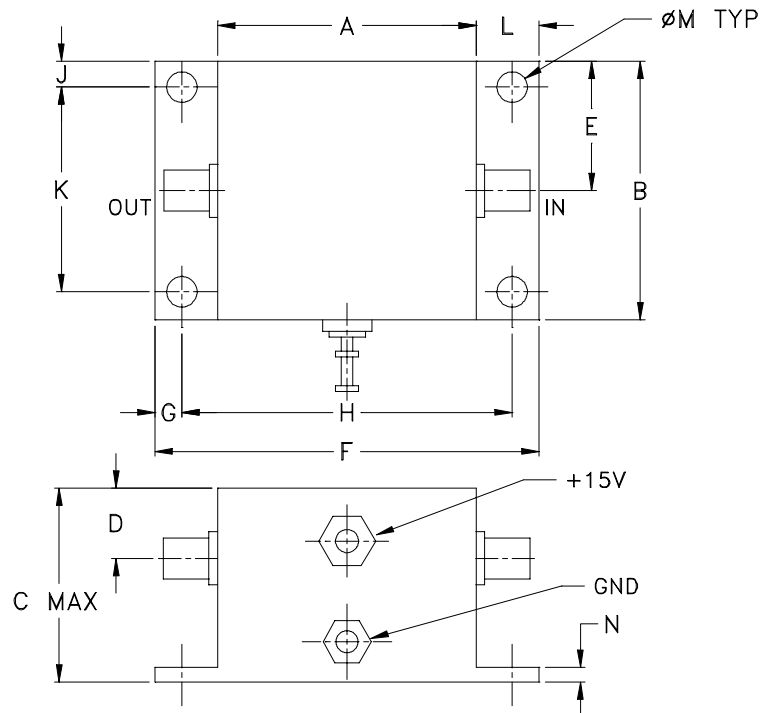


Outline Dimensions



CASE #	A	B	C	D	E	F	G	H	J	K	L
EEE132	.90 (22.86)	.90 (22.86)	.675 (17.15)	.245 (6.22)	.45 (11.43)	1.34 (34.04)	.09 (2.29)	1.152 (29.26)	.09 (2.29)	.712 (18.08)	.22 (5.59)

CASE #	M	N	WT. GRAM
EEE132	.106 (2.69)	.05 (1.27)	50.0

Dimensions are in inches (mm). Tolerances: 2Pl. $\pm .03$; 3 Pl. $\pm .015$

Notes:

- Case material: Aluminum alloy.
- Case finish:
For RoHS Case Styles: Clear chemical conversion coating, non-chrome or trivalent chrome based.



Distribution Centers NORTH AMERICA 800-654-7949 • 417-335-5935 • Fax 417-335-5945 • EUROPE 44-1252-832600 • Fax 44-1252-837010

Mini-Circuits ISO 9001 & ISO 14001 Certified

INTERNET <http://www.minicircuits.com>

P.O. Box 350166, Brooklyn, New York 11235-0003 (718) 934-4500 Fax (718) 332-4661