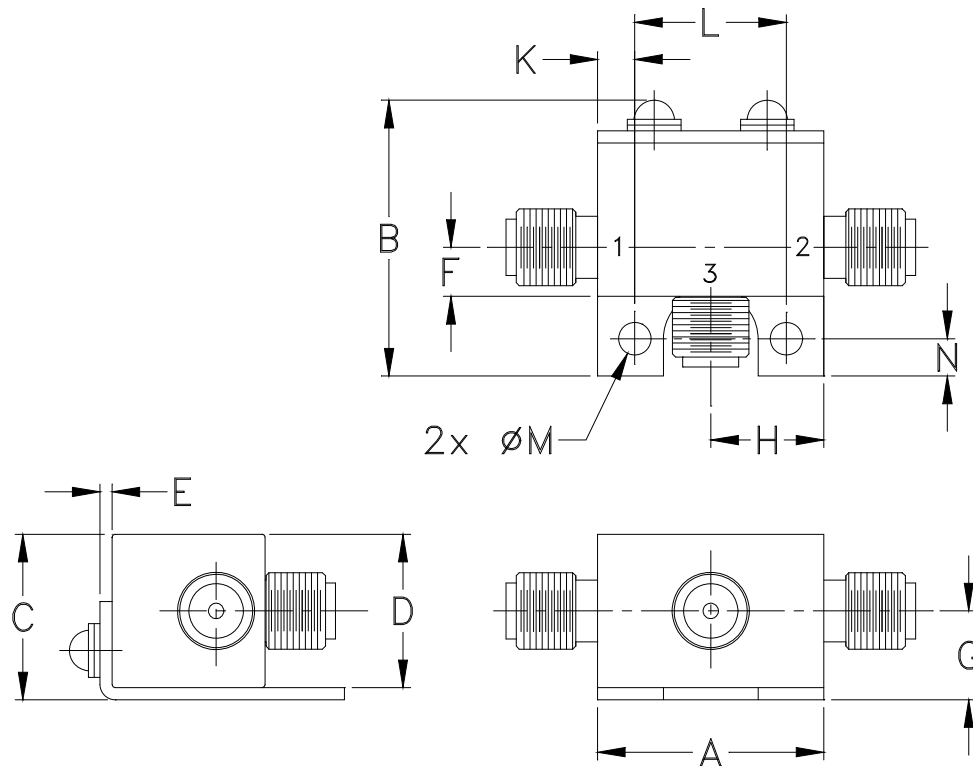


Outline Dimensions



| CASE #. | A | B | C | D | E | F | G | H | J | K | L | M | N | WT, GRAM |
|---------|----------------|----------------|----------------|----------------|---------------|---------------|---------------|---------------|--------|----------------|-----------------|----------------|----------------|-------------|
| FL905 | .74 (18.80) | .90 (22.86) | .54 (13.72) | .50 (12.70) | .04 (1.02) | .16 (4.06) | .29 (7.37) | .37 (9.40) | - - | .122 (3.10) | .496 (12.60) | .106 (2.69) | .122 (3.10) | 20.0 |

Dimensions are in inches (mm). Tolerances: 2Pl. $\pm .03$; 3Pl. $\pm .015$.

Tolerance on hole size and interaxes dimensions to be $\pm .005$.

Notes:

1. Case material: Brass.
2. Case finish: Nickel plate.

Mini-Circuits®

INTERNET <http://www.minicircuits.com>

P.O. Box 350166, Brooklyn, New York 11235-0003 (718) 934-4500 Fax (718) 332-4661

Distribution Centers NORTH AMERICA 800-654-7949 • 417-335-5935 • Fax 417-335-5945 • EUROPE 44-1252-832600 • Fax 44-1252-837010

Mini-Circuits ISO 9001 & ISO 14001 Certified