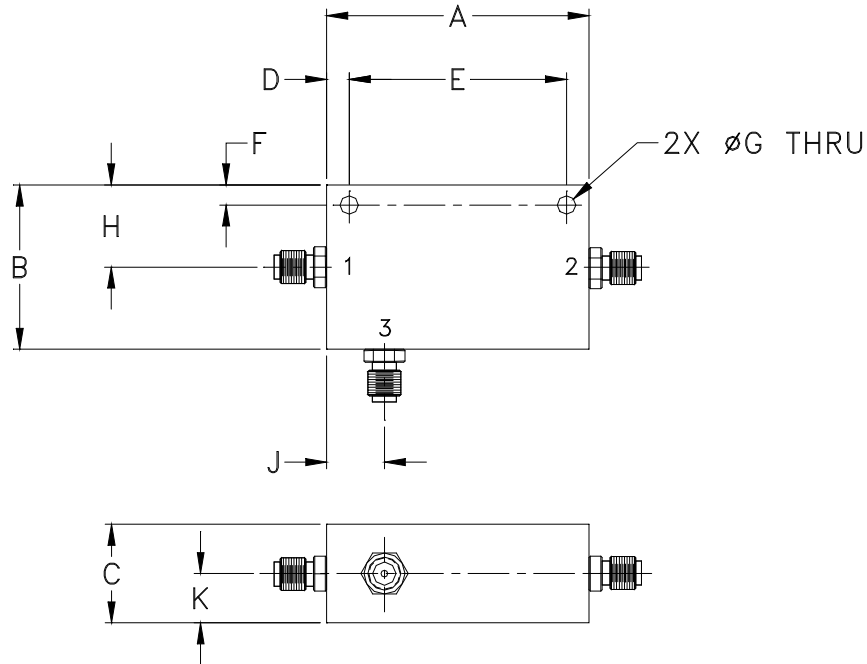


### Outline Dimensions



CASE #.	A	B	C	D	E	F	G	H	J	K	WT, GRAM
FM587	2.00 (50.80)	1.24 (31.50)	.75 (19.05)	.17 (4.32)	1.656 (42.06)	.15 (3.81)	.140 (3.56)	.62 (15.75)	.44 (11.18)	.38 (9.65)	57

Dimensions are in inches (mm). Tolerances: 2Pl.  $\pm .03$ ; 3Pl.  $\pm .015$

#### Notes:

- Case material: Aluminum alloy.
- Case finish:

For RoHS Case Styles:

Clear chemical conversion coating, non-chrome or trivalent chrome based.



P.O. Box 350166, Brooklyn, New York 11235-0003 (718) 934-4500 Fax (718) 332-4661 For detailed performance specs & shopping online see Mini-Circuits web site



The Design Engineers Search Engine Provides ACTUAL Data Instantly From MINI-CIRCUITS At: [www.minicircuits.com](http://www.minicircuits.com)

RF/IF MICROWAVE COMPONENTS