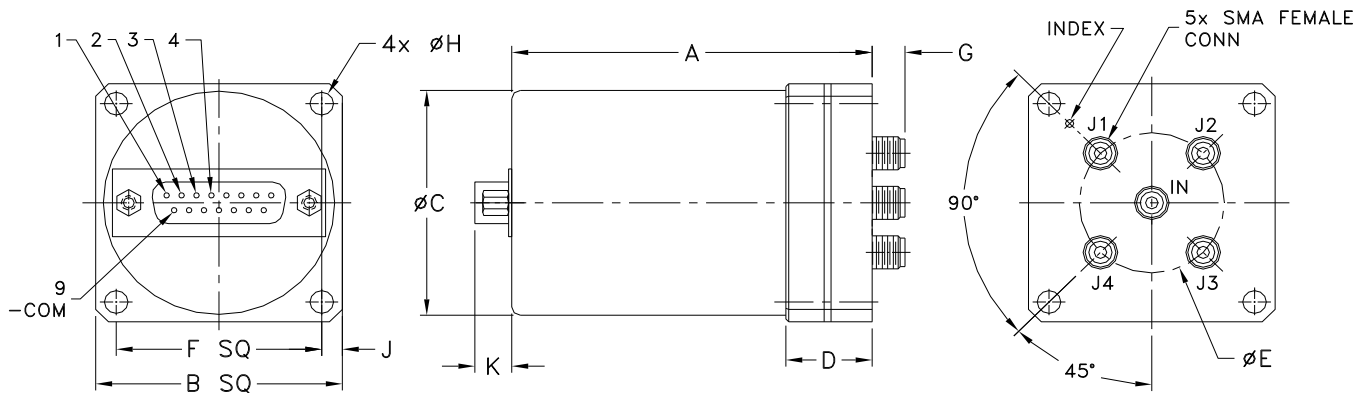


Case Style

HJ

Outline Dimensions

HJ1768-1



CASE#	A	B	C	D	E	F	G	H	J	K	L
HJ1768-1	2.63 (66.80)	1.80 (45.72)	1.70 (43.18)	.63 (16.00)	1.06 (26.92)	1.500 (38.10)	.24 (6.10)	.172 (4.37)	.15 (3.81)	.27 (6.86)	- -

CASE#	M	N	WT. GRAM
HJ1768-1	-	-	172

Dimensions are in inches (mm). Tolerances: 2 Pl. $\pm .015$; 3 Pl. $\pm .005$

Note:

- Case material: Aluminum.

Mini-Circuits®

INTERNET <http://www.minicircuits.com>

P.O. Box 350166, Brooklyn, New York 11235-0003 (718) 934-4500 Fax (718) 332-4661

Distribution Centers NORTH AMERICA 800-654-7949 • 417-335-5935 • Fax 417-335-5945 • EUROPE 44-1252-832600 • Fax 44-1252-837010

Mini-Circuits ISO 9001 & ISO 14001 Certified