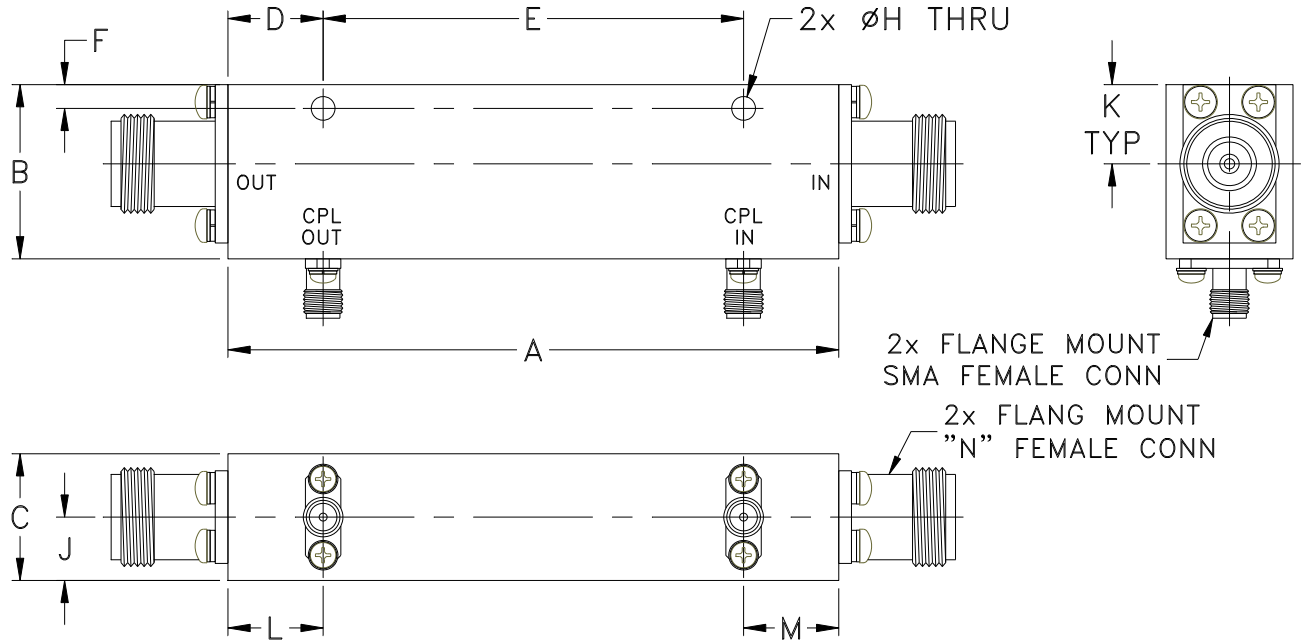


Outline Dimensions

HT1762



CASE #	A	B	C	D	E	F	G	H	J	K
HT1762	3.85 (97.79)	1.10 (27.94)	.80 (20.32)	.60 (15.24)	2.650 (67.31)	.15 (3.81)	-	.150 (3.81)	.40 (10.16)	.50 (12.70)

CASE #	L	M	WT. GRAM
HT1762	.60 (15.24)	.60 (15.24)	200.0

Dimensions are in inches (mm). Tolerances: 2Pl. $\pm .03$; 3Pl. $\pm .015$

Notes:

1. Case material: Aluminum alloy.
2. Case finish:

For RoHS Case Styles: Clear Chemical conversion coating, non-chrome or trivalent chrome based.

Mini-Circuits®
ISO 9001 ISO 14001 CERTIFIED

ALL NEW
minicircuits.com

P.O. Box 350166, Brooklyn, New York 11235-0003 (718) 934-4500 Fax (718) 332-4661 For detailed performance specs & shopping online see Mini-Circuits web site



The Design Engineers Search Engine Provides ACTUAL Data Instantly From MINI-CIRCUITS At: www.minicircuits.com

RF/IF MICROWAVE COMPONENTS