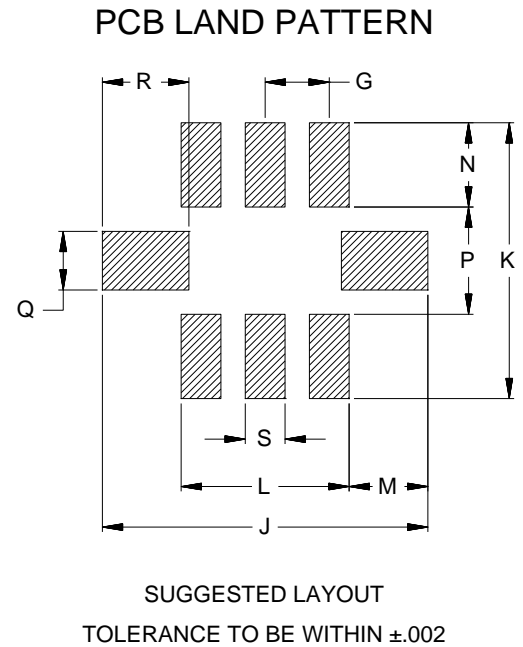
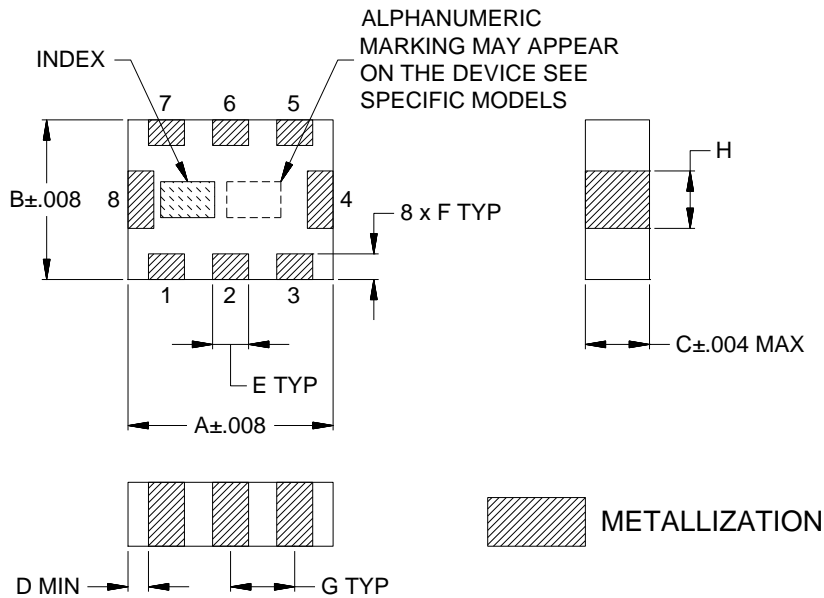


## Outline Dimensions

JV1210C-6



| CASE#     | A              | B              | C              | D              | E              | F              | G              | H              | J              | K              | L              | M              |
|-----------|----------------|----------------|----------------|----------------|----------------|----------------|----------------|----------------|----------------|----------------|----------------|----------------|
| JV1210C-6 | .126<br>(3.20) | .098<br>(2.50) | .039<br>(1.00) | .004<br>(0.10) | .022<br>(0.56) | .016<br>(0.40) | .039<br>(1.00) | .035<br>(0.90) | .200<br>(5.08) | .170<br>(4.32) | .103<br>(2.62) | .048<br>(1.23) |

| CASE#     | N              | P              | Q              | R              | S              | WT.GRAM |
|-----------|----------------|----------------|----------------|----------------|----------------|---------|
| JV1210C-6 | .052<br>(1.32) | .066<br>(1.68) | .036<br>(0.92) | .053<br>(1.35) | .024<br>(0.62) | 0.03    |

Dimensions are in inches (mm). Tolerances: 2 Pl.  $\pm .01$ ; 3 Pl.  $\pm .005$

### Notes:

1. Open style, Ceramic base.
2. Termination finish: **as shown below or indicated on Data Sheet.**  
 For RoHS Case Styles: Tin plate over Nickel plate. All models, (+) suffix.  
 For RoHS-5 Case Styles: Tin-Lead plate. All models, no (+) suffix.
3. Pad tolerance is non-cumulative. Minimum spacing between each pad is .004.



P.O. Box 350166, Brooklyn, New York 11235-0003 (718) 934-4500 Fax (718) 332-4661 For detailed performance specs & shopping online see Mini-Circuits web site



The Design Engineers Search Engine Provides ACTUAL Data Instantly From MINI-CIRCUITS At: [www.minicircuits.com](http://www.minicircuits.com)

RF/IF MICROWAVE COMPONENTS