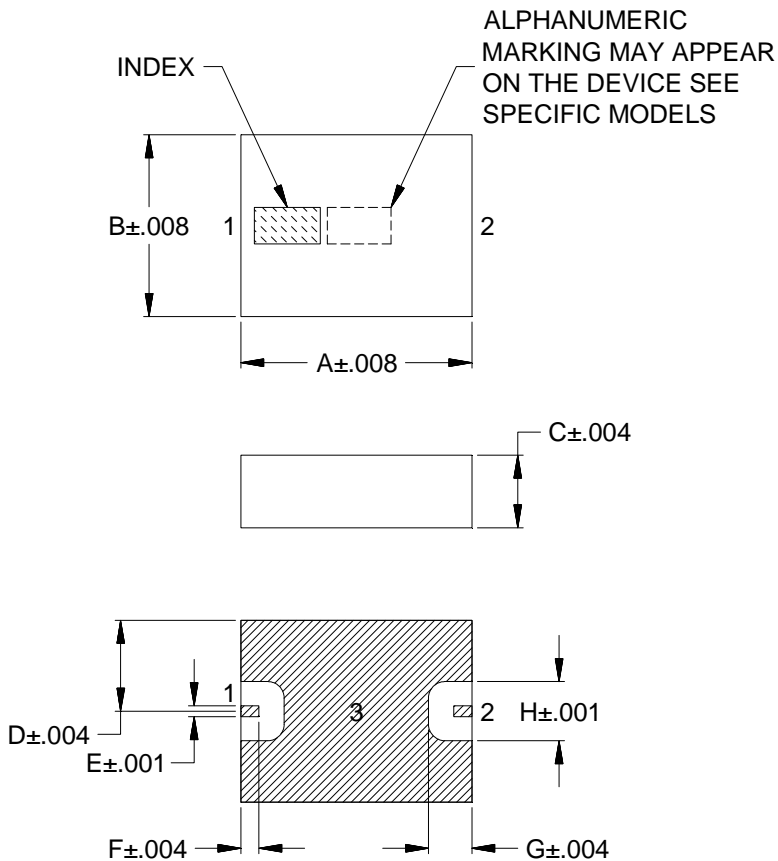


Case Style

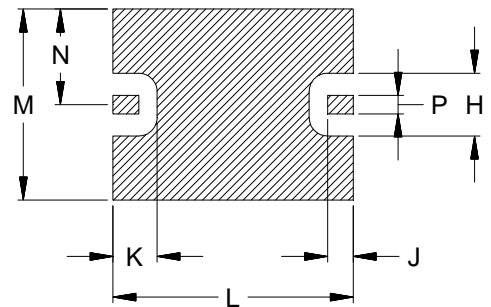
JV

Outline Dimensions

JV1210C-7



PCB LAND PATTERN



SUGGESTED LAYOUT

TOLERANCE TO BE WITHIN $\pm .002$

METALLIZATION

| CASE# | A | B | C | D | E | F | G | H | J | K | L | M | N | P | WT.GRAM |
|-----------|----------------|----------------|----------------|----------------|----------------|----------------|----------------|----------------|----------------|----------------|----------------|----------------|----------------|----------------|---------|
| JV1210C-7 | .126 (3.20) | .098 (2.50) | .039 (1.00) | .049 (1.25) | .006 (0.15) | .010 (0.25) | .024 (0.60) | .032 (0.81) | .014 (0.36) | .024 (0.61) | .131 (3.33) | .103 (2.63) | .052 (1.31) | .010 (0.25) | 0.03 |

Dimensions are in inches (mm). Tolerances: 2Pl. $\pm .01$; 3Pl. $\pm .005$

Notes:

1. Open style, Ceramic base.
2. Termination finish: **as shown below or indicated on Data Sheet.**
For RoHS Case Styles: Gold plate over Nickel plate. All models, (+) suffix.
3. Pad tolerance is non-cumulative. Minimum spacing between each pad is .004.

Mini-Circuits[®]
ISO 9001 ISO 14001 CERTIFIED

ALL NEW
 minicircuits.com

P.O. Box 350166, Brooklyn, New York 11235-0003 (718) 934-4500 Fax (718) 332-4661 For detailed performance specs & shopping online see Mini-Circuits web site



The Design Engineers Search Engine Provides ACTUAL Data Instantly From MINI-CIRCUITS At: www.minicircuits.com

RF/IF MICROWAVE COMPONENTS