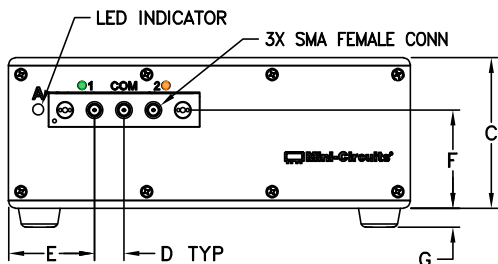
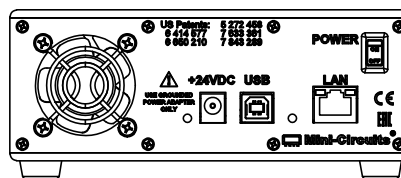


TOP VIEW

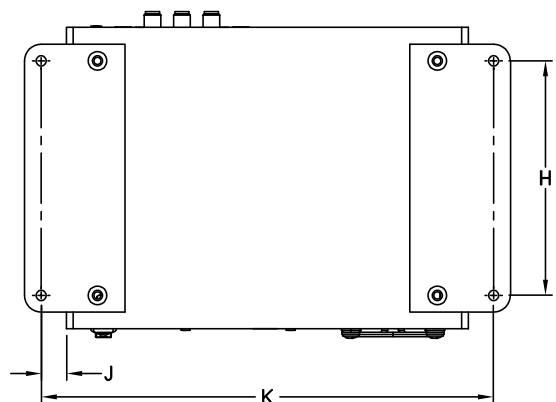


FRONT VIEW



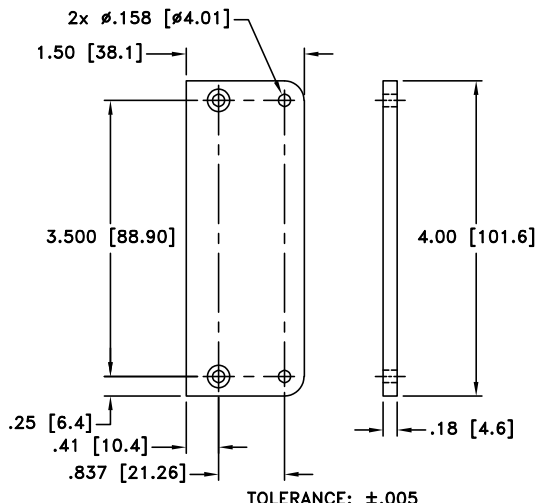
REAR VIEW

BRACKET OPTION  
ONE SET OF 2 EACH



BOTTOM VIEW

SHOWN WITH RUBBER FEET REMOVED AND BRACKETS INSTALLED.



INSTRUCTION FOR MOUNTING BRACKETS:  
TOOL REQUIRED: PHILLIPS HEAD SCREW DRIVER  
STEP 1: REMOVE RUBBER FEET FROM THE BOTTOM OF THE UNIT, DO NOT DISCARD THE FASTENERS.  
STEP 2: MOUNT THE BRACKETS WITH THE FASTENERS REMOVED IN STEP 1, USING THE COUNTER BORE HOLES IN THE BRACKET.

CASE#	A	B	C	D	E	F	G	H	J	K	WT. GRAMS
LM1848	6.00 (152.4)	4.50 (114.3)	2.25 (57.18)	.440 (11.18)	1.285 (32.64)	1.47 (37.3)	.28 (7.1)	3.500 (88.90)	.375 (9.5)	6.75 (171.45)	875

Dimensions are in inches (mm). Tolerances: 2 Pl.±.03; 3 Pl. ±.015

### Notes:

1. Case and Bracket material: Aluminum Alloy.
2. Finish: For Case- Powder coating. Color: Blue, For Bracket- Clear Chemical conversion coating.



P.O. Box 350166, Brooklyn, New York 11235-0003 (718) 934-4500 Fax (718) 332-4661 For detailed performance specs & shopping online see Mini-Circuits web site



The Design Engineers Search Engine Provides ACTUAL Data Instantly From MINI-CIRCUITS At: [www.minicircuits.com](http://www.minicircuits.com)

RF/IF MICROWAVE COMPONENTS