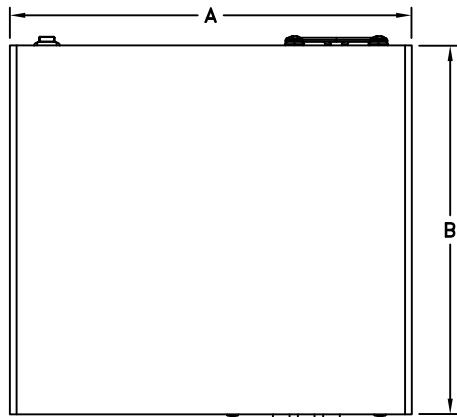
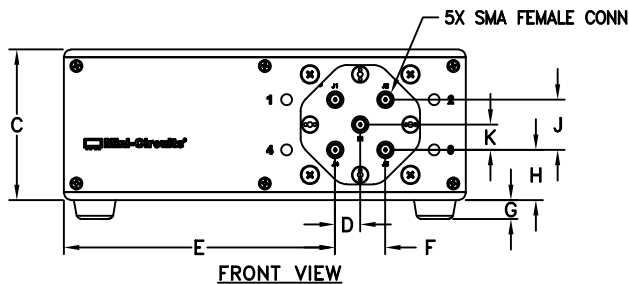


Outline Dimensions

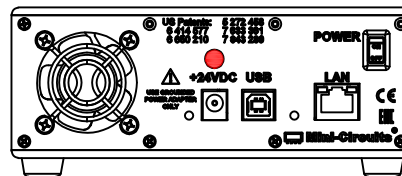
MR1853



TOP VIEW

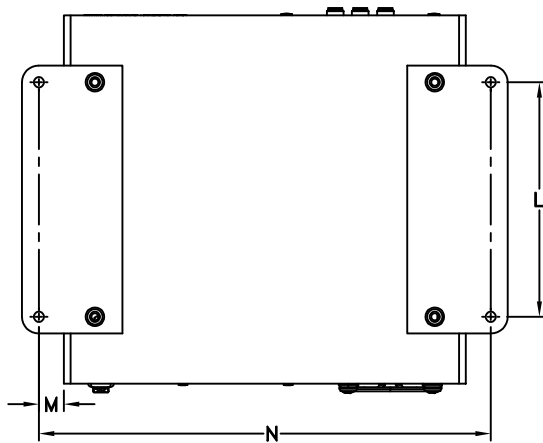


FRONT VIEW



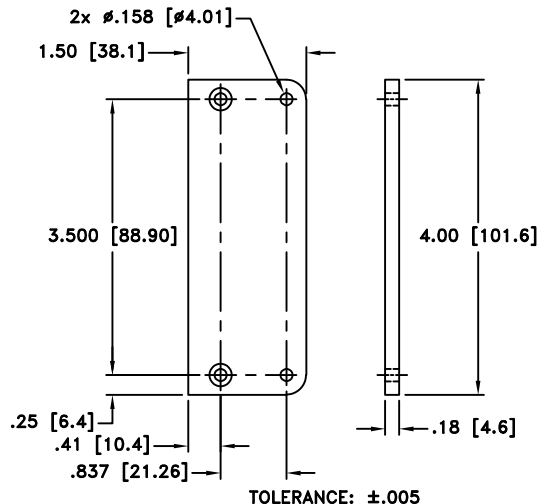
REAR VIEW

BRACKET OPTION ONE SET OF 2 EACH



BOTTOM VIEW

SHOWN WITH RUBBER FEET REMOVED AND BRACKETS INSTALLED.



TOLERANCE: $\pm .005$

INSTRUCTION FOR MOUNTING BRACKETS:
TOOL REQUIRED: PHILLIPS HEAD SCREW DRIVER
STEP 1: REMOVE RUBBER FEET FROM THE BOTTOM OF THE UNIT, DO NOT DISCARD THE FASTENERS.
STEP 2: MOUNT THE BRACKETS WITH THE FASTENERS REMOVED IN STEP 1, USING THE COUNTER BORE HOLES IN THE BRACKET.

CASE#	A	B	C	D	E	F	G	H	J	K	L	M	N	WT. GRAMS
MR1853	6.00 (152.4)	5.50 (139.7)	2.25 (57.2)	.375 (9.52)	4.05 (102.9)	.75 (19.1)	.28 (7.1)	.751 (19.1)	.750 (19.1)	.375 (9.52)	3.500 (88.9)	.375 (9.52)	6.75 (171.45)	830

Dimensions are in inches (mm). Tolerances: 2 Pl. $\pm .03$; 3 Pl. $\pm .015$

Notes:

- Case and Bracket material: Aluminum Alloy.
- Finish: For Case- Powder coating. Color: Blue, For Bracket- Clear Chemical conversion coating.

Mini-Circuits®
 ISO 9001 ISO 14001 CERTIFIED

ALL NEW
minicircuits.com

P.O. Box 350166, Brooklyn, New York 11235-0003 (718) 934-4500 Fax (718) 332-4661 For detailed performance specs & shopping online see Mini-Circuits web site



The Design Engineers Search Engine Provides ACTUAL Data Instantly From MINI-CIRCUITS At: www.minicircuits.com

RF/IF MICROWAVE COMPONENTS