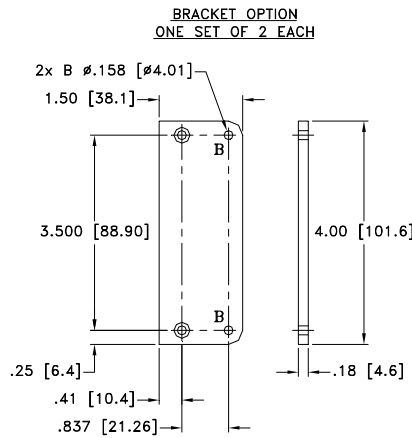
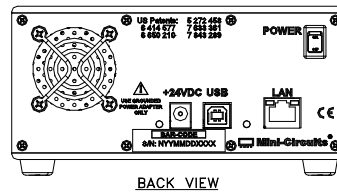
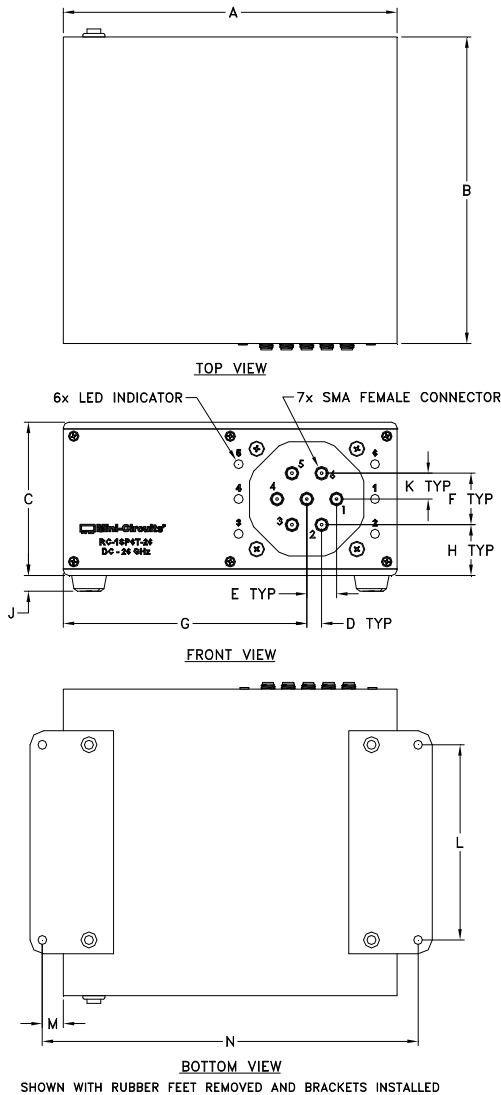


Outline Dimensions

PF2909



CASE#	A	B	C	D	E	F	G	H	J	K	L	M
PF2909	6.00 (152.40)	5.50 (139.70)	2.75 (69.85)	.27 (6.77)	.53 (13.54)	.92 (23.45)	4.38 (111.13)	.91 (23.20)	.28 (7.11)	.46 (11.73)	3.500 (88.90)	.375 (9.53)

CASE#	N	P	WT, GRAM
PF2909	6.72 (170.69)	--	1110

Dimensions are in inches (mm). Tolerances: 1Pl. ± .1; 2 Pl. ± .03; 3 Pl. ± .015

Notes:

- Case and Bracket material: Aluminum alloy.
- Finish: For Case – Powder coating. Color: Blue, For Bracket – Clear Chemical conversion coating.



P.O. Box 350166, Brooklyn, New York 11235-0003 (718) 934-4500 Fax (718) 332-4661 For detailed performance specs & shopping online see Mini-Circuits web site
The Design Engineers Search Engine Provides ACTUAL Data Instantly From MINI-CIRCUITS At: www.minicircuits.com



RF/IF MICROWAVE COMPONENTS