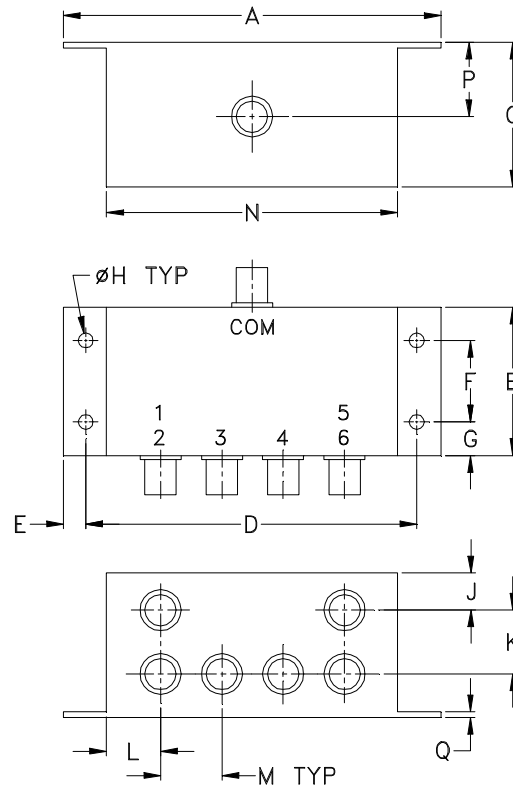


### Outline Dimensions



CASE#	A	B	C	D	E	F	G	H	J	K	L	M	N
Q28	4.06 (103.12)	1.60 (40.64)	1.57 (39.88)	3.56 (90.42)	.24 (6.10)	.88 (22.35)	.36 (9.14)	.160 (4.06)	.43 (10.92)	.69 (17.53)	.58 (14.73)	.66 (16.76)	3.13 (79.50)

CASE#	P	Q	WT. GRAMS
Q28	.8 (20.32)	.125 (3.18)	190.0

Dimensions are in inches (mm). Tolerances: 2 Pl.  $\pm .03$ ; 3 Pl.  $\pm .015$

#### Notes:

1. Case material: Aluminum alloy.
2. Case finish:

For RoHS Case Styles:

Clear chemical conversion coating, non-chrome or trivalent chrome based.



INTERNET <http://www.minicircuits.com>

P.O. Box 350166, Brooklyn, New York 11235-0003 (718) 934-4500 Fax (718) 332-4661

Distribution Centers NORTH AMERICA 800-654-7949 • 417-335-5935 • Fax 417-335-5945 • EUROPE 44-1252-832600 • Fax 44-1252-837010

Mini-Circuits ISO 9001 & ISO 14001 Certified