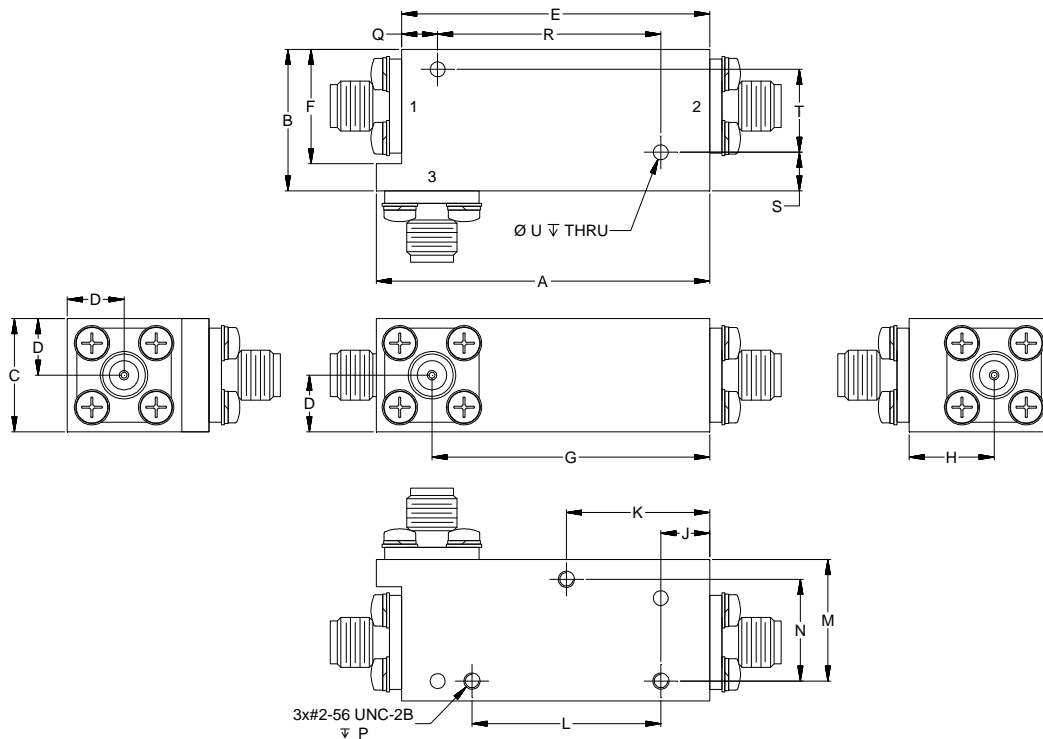


Outline Dimensions

QH2362



CASE#	A	B	C	D	E	F	G	H	J	K
QH2362	1.77 (44.96)	.75 (19.05)	.60 (15.24)	.30 (7.62)	1.63 (41.40)	.61 (15.49)	1.47 (37.34)	.45 (11.43)	.26 (6.60)	.76 (19.30)

CASE#	L	M	N	P	Q	R	S	T	U	WT.GRAMS
QH2362	1.000 (25.40)	.65 (16.51)	.540 (13.72)	.100 (2.54)	.19 (4.83)	1.181 (30.00)	.21 (5.21)	.440 (11.18)	.079 (2.00)	105

Dimensions are in inches (mm). Tolerances: 2 Pl. $\pm .05$; 3 Pl. $\pm .015$

Notes:

1. Case material: Brass.
2. Case Finish:
 - a. Case & Cover of the units – Polyurethane spray painted over silver plating.
3. Refer to the individual model data sheet for the type of connectors available.



P.O. Box 350166, Brooklyn, New York 11235-0003 (718) 934-4500 Fax (718) 332-4661 For detailed performance specs & shopping online see Mini-Circuits web site



The Design Engineers Search Engine Provides ACTUAL Data Instantly From MINI-CIRCUITS At: www.minicircuits.com

RF/IF MICROWAVE COMPONENTS