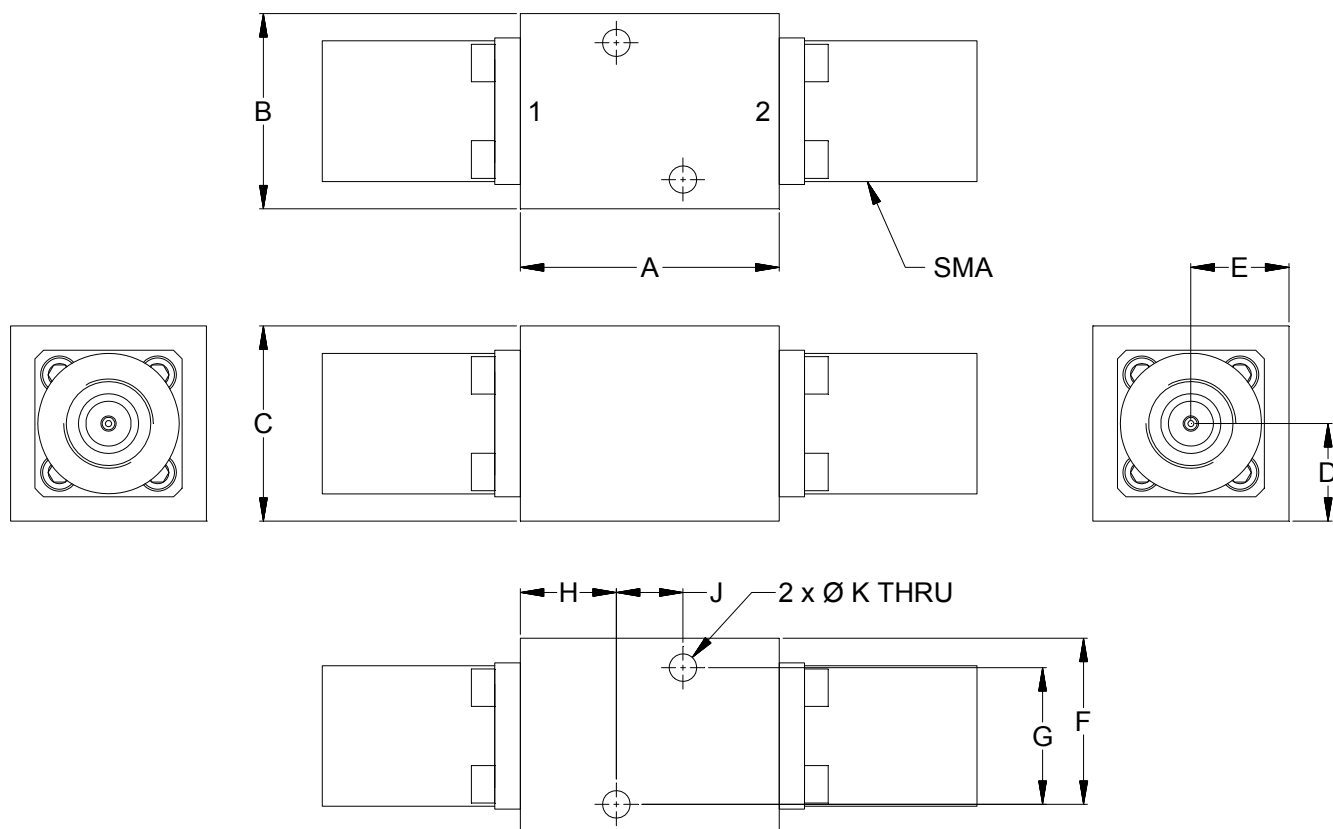


Outline Dimensions

RP2464



CASE#	A	B	C	D	E	F	G	H	J	K	WT.GRAMS
	(Max)	(Max)	(Max)								
RP2464	.70 (17.78)	.50 (12.70)	.50 (12.70)	.25 (6.35)	.25 (6.35)	.43 (10.92)	.350 (8.89)	.25 (6.35)	.170 (4.32)	.065 (1.65)	30

Dimensions are in inches (mm). Tolerances: 2 Pl. $\pm .10$; 3 Pl. $\pm .015$

Notes:

- Case material: Brass.
- Case finish:
 - Case & Cover of the units – Polyurethane spray painted over silver plating.
- Refer to the individual model data sheet for the type of connectors available.



P.O. Box 350166, Brooklyn, New York 11235-0003 (718) 934-4500 Fax (718) 332-4661 For detailed performance specs & shopping online see Mini-Circuits web site



The Design Engineers Search Engine Provides ACTUAL Data Instantly From MINI-CIRCUITS At: www.minicircuits.com

RF/IF MICROWAVE COMPONENTS