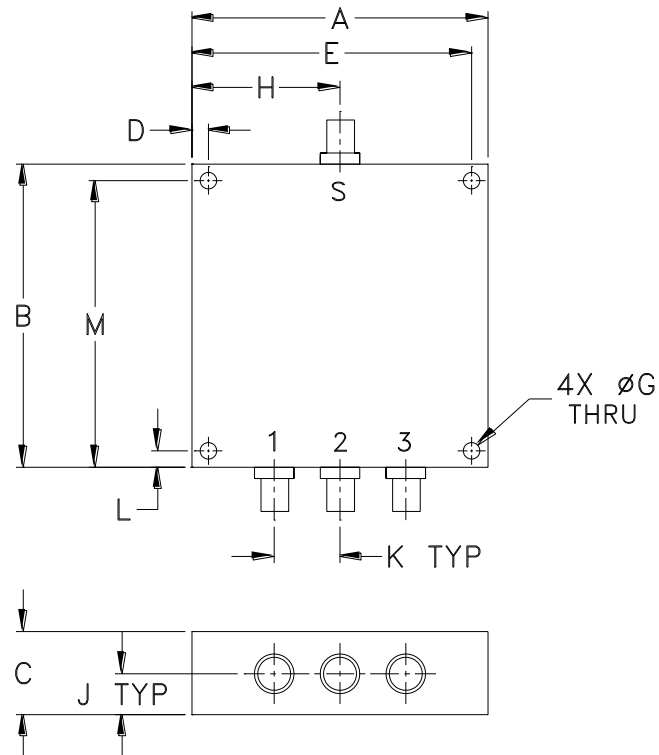


Outline Dimensions

UU1332



CASE#	A	B	C	D	E	F	G	H	J	K	L	M	WT. GRAMS
UU1332	4.50 (114.30)	6.00 (152.40)	.88 (22.35)	.15 (3.81)	4.350 (110.49)	--	.156 (3.96)	2.25 (57.15)	.44 (11.18)	1.50 (38.10)	.15 (3.81)	5.85 (148.59)	760

Dimensions are in inches (mm). Tolerances: 2 Pl. $\pm .03$; 3 Pl. $\pm .015$

Notes:

1. Case material: Aluminum alloy.
2. Case finish:
For RoHS Case Styles: Clear chemical conversion coating, non-chrome or trivalent chrome based.
3. Refer to the individual model data sheet for the type of connectors available.

Mini-Circuits®
ISO 9001 ISO 14001 CERTIFIED

ALL NEW
minicircuits.com

P.O. Box 350166, Brooklyn, New York 11235-0003 (718) 934-4500 Fax (718) 332-4661 For detailed performance specs & shopping online see Mini-Circuits web site



The Design Engineers Search Engine Provides ACTUAL Data Instantly From MINI-CIRCUITS At: www.minicircuits.com

RF/IF MICROWAVE COMPONENTS