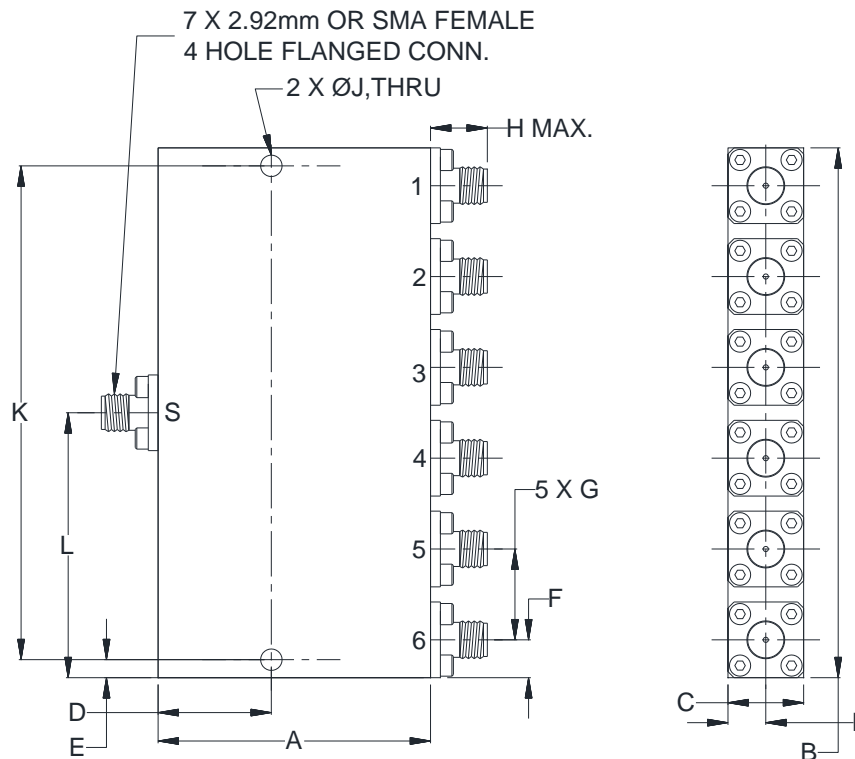


Case Style

UU

Outline Dimensions

UU2414-1



CASE#	A	B	C	D	E	F	G	H	J	K	L	WT. GRAMS
UU2414-1	1.80 (45.72)	3.50 (88.90)	.50 (12.70)	.748 (19.00)	.119 (3.02)	.25 (6.35)	.60 (15.24)	.43 (11.0)	.142 (3.60)	3.262 (82.86)	1.75 (44.45)	180

Dimensions are in inches (mm). Tolerances: 2 Pl. $\pm .03$; 3 Pl. $\pm .015$

Notes:

1. Case material: Aluminum alloy.
2. Case finish: Painting Color: Blue.
3. Refer to the individual model data sheet for the type of connectors available.

Mini-Circuits®
ISO 9001 ISO 14001 CERTIFIED

ALL NEW
minicircuits.com

P.O. Box 350166, Brooklyn, New York 11235-0003 (718) 934-4500 Fax (718) 332-4661 For detailed performance specs & shopping online see Mini-Circuits web site



The Design Engineers Search Engine Provides ACTUAL Data Instantly From MINI-CIRCUITS At: www.minicircuits.com

RF/IF MICROWAVE COMPONENTS