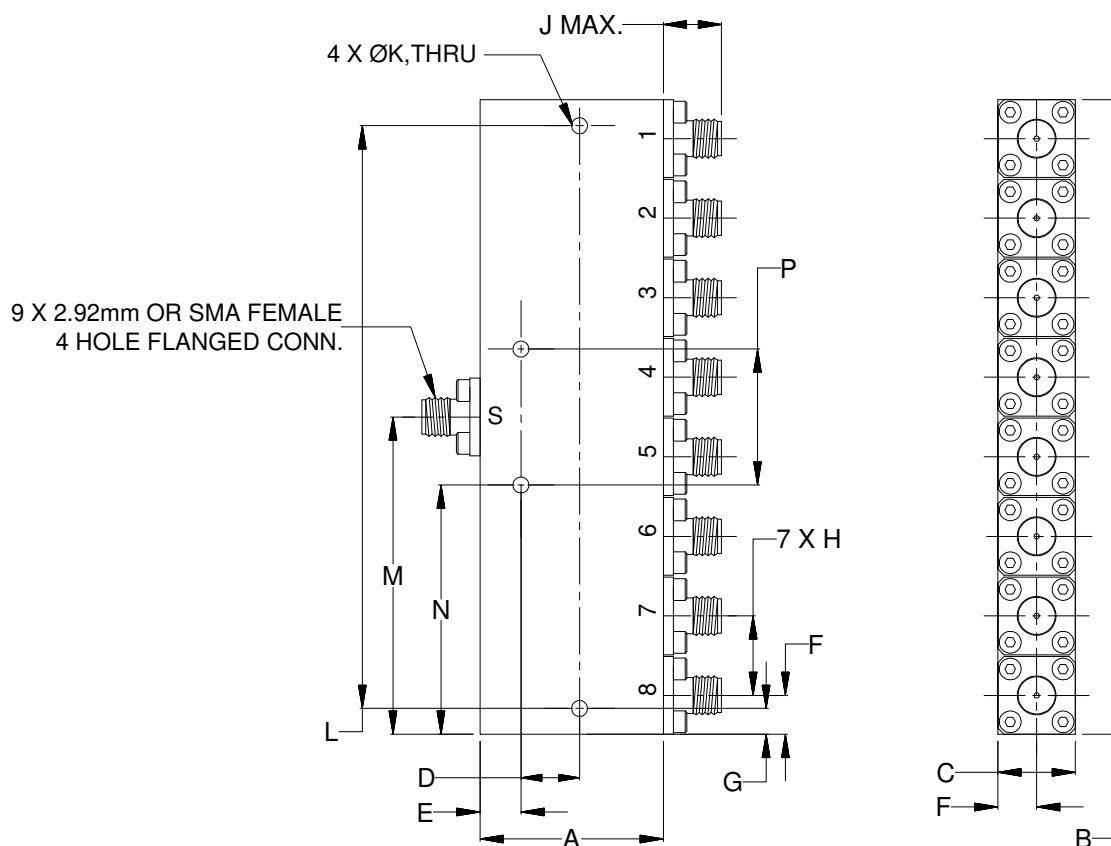


Outline Dimensions

UU2415-5



CASE#	A	B	C	D	E	F	G	H	J	K	L	M
UU2415-5	1.18 (30.00)	4.08 (103.70)	.50 (12.70)	.378 (9.60)	.264 (6.70)	.25 (6.35)	.166 (4.22)	.51 (13.00)	.43 (11.0)	.102 (2.60)	3.750 (95.25)	2.04 (51.85)

CASE#	N	P	WT. GRAMS
UU2415-5	1.604 (40.74)	.875 (22.22)	150

Dimensions are in inches (mm). Tolerances: 2 Pl. $\pm .03$; 3 Pl. $\pm .015$

Notes:

1. Case material: Aluminum alloy.
2. Case finish: Painting Color: Blue.
3. Refer to the individual model data sheet for the type of connectors available.



P.O. Box 350166, Brooklyn, New York 11235-0003 (718) 934-4500 Fax (718) 332-4661 For detailed performance specs & shopping online see Mini-Circuits web site



The Design Engineers Search Engine Provides ACTUAL Data Instantly From MINI-CIRCUITS At: www.minicircuits.com

RF/IF MICROWAVE COMPONENTS

UU2415-5 Rev.: BA (06/03/19) M174698 File: UU2415-5.DOCX.DOC

This document and its contents are the property of Mini-Circuits