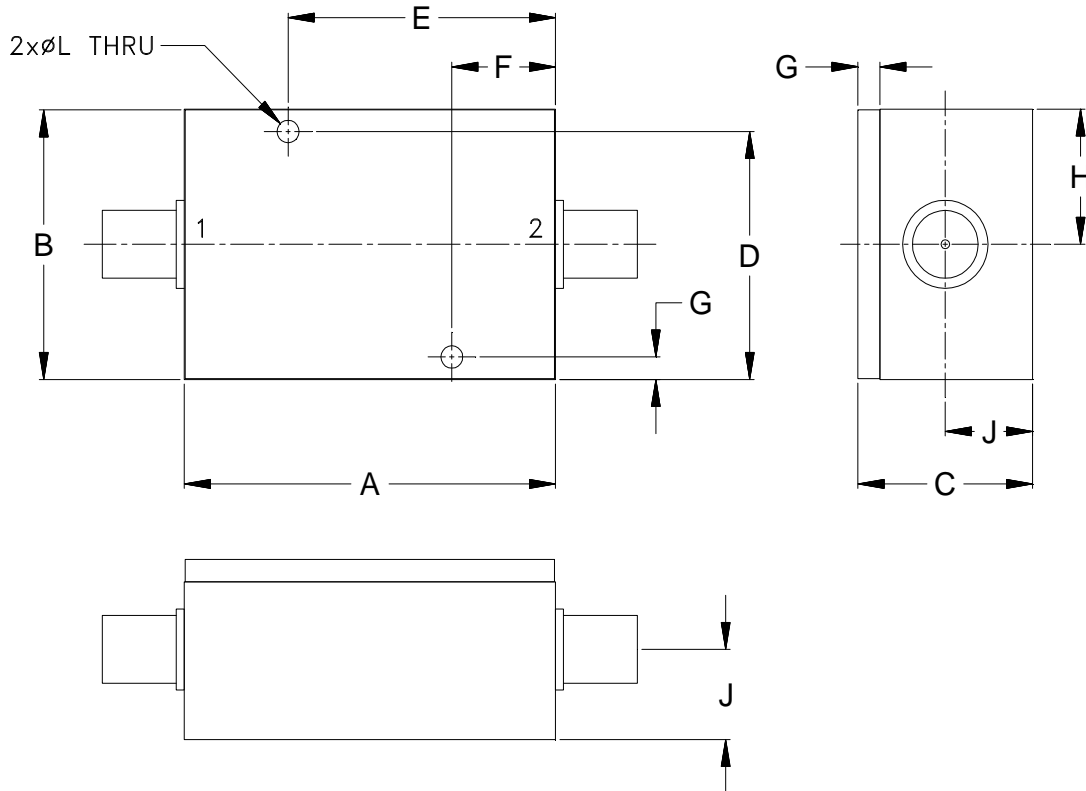


Outline Dimensions

VQ2072



CASE#	A	B	C	D	E	F	G	H	J	WT. GRAMS
VQ2072	2.125 (53.98)	1.500 (38.10)	1.000 (25.40)	1.375 (34.93)	1.531 (38.89)	0.594 (15.09)	0.125 (3.18)	0.750 (19.05)	0.500 (12.70)	130

Dimensions are in inches (mm). Tolerances: 2 Pl. $\pm .03$; 3 Pl. $\pm .015$

Notes:

1. Case material: Aluminum alloy.
2. Case finish:
For RoHS Case Styles: Clear chemical conversion coating, non-chrome or trivalent chrome based.
3. Refer to the individual model data sheet for the type of connectors available.



P.O. Box 350166, Brooklyn, New York 11235-0003 (718) 934-4500 Fax (718) 332-4661 For detailed performance specs & shopping online see Mini-Circuits web site



The Design Engineers Search Engine Provides ACTUAL Data Instantly From MINI-CIRCUITS At: www.minicircuits.com

RF/IF MICROWAVE COMPONENTS