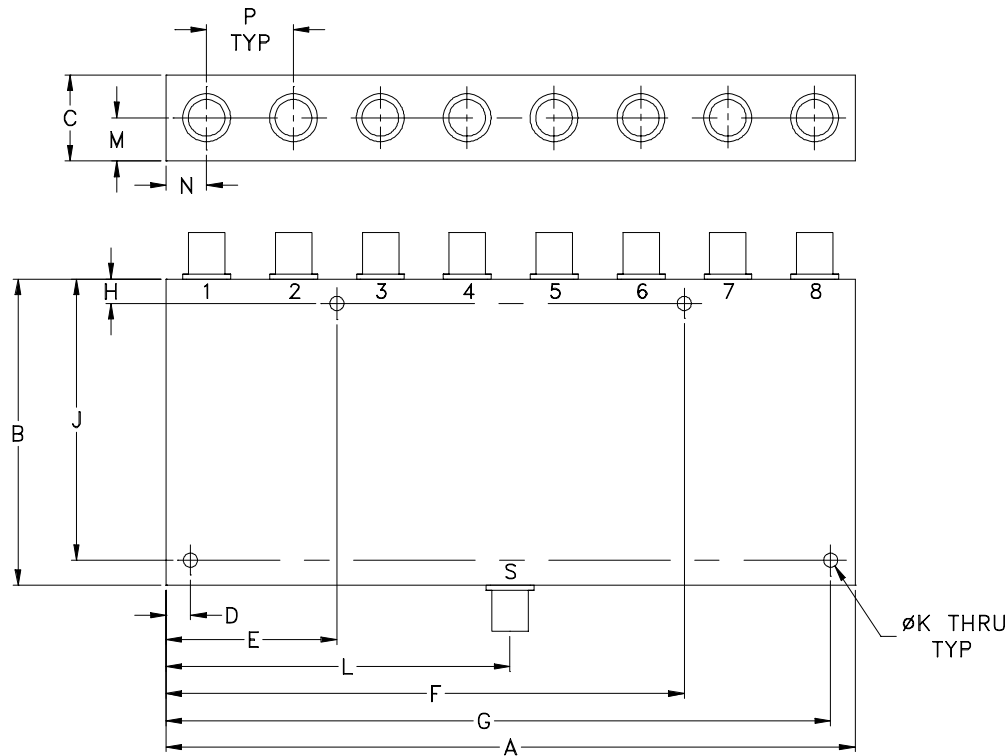


### Outline Dimensions



CASE#	A	B	C	D	E	F	G	H	J	K	L	M	N
Z41	7.06 (179.32)	3.13 (79.50)	.88 (22.35)	.250 (6.35)	1.750 (44.45)	5.310 (134.87)	6.810 (172.97)	.250 (6.35)	2.875 (73.03)	.144 (3.66)	3.53 (89.66)	.44 (11.18)	.415 (10.54)

CASE#	P	WT.GRAMS
Z41	.89 (22.61)	800

Dimensions are in inches (mm). Tolerances: 2 Pl.  $\pm .03$ ; 3 Pl.  $\pm .015$

#### Notes:

- Case material: Aluminum alloy.
- Case finish:  
For RoHS Case Styles: Clear chemical conversion coating, non-chrome or trivalent chrome based.