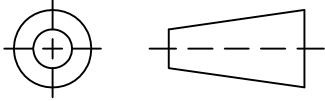


THIRD ANGLE PROJECTION



REVISIONS

REV	ECN No.	DESCRIPTION	DATE	DR	AUTH
OR	M116031	NEW RELEASE	02/14/08	MMG	DJ
A	ECO-000060	MODIFIED CASE STYLE	10/16/19	ITG	RB

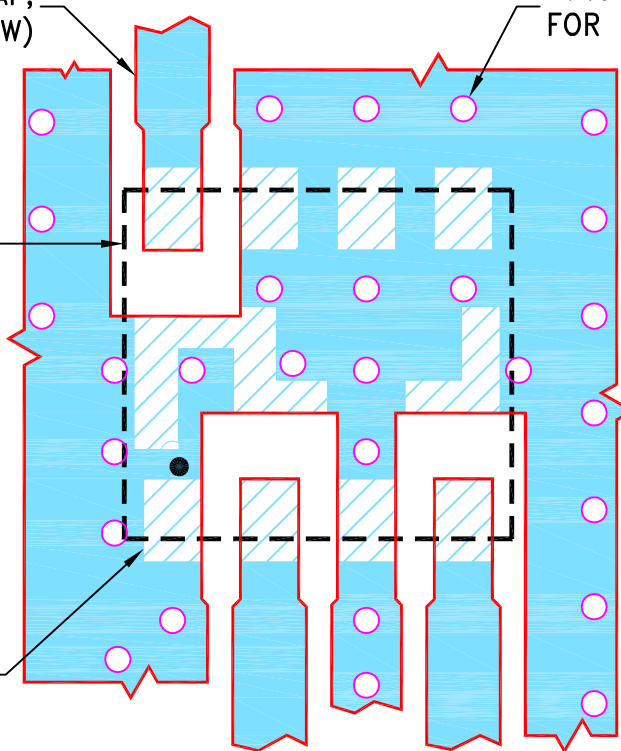
SUGGESTED MOUNTING CONFIGURATION FOR HV1195 CASE STYLE, "08MX05" PIN CODE

COPLANAR WAVEGUIDE:
.038 LINE WIDTH & .013 GAP,
3 PL. (SEE NOTE BELOW)

∅.013 PTH
FOR GROUND

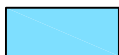
PACKAGE
OUTLINE

PIN 1

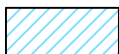


NOTES:

1. TRACE WIDTH AND GAP ARE SHOWN FOR ROGERS R04350B WITH DIELECTRIC THICKNESS .020±.0015"; COPPER: 1/2 OZ. EACH SIDE.
FOR OTHER MATERIALS TRACE WIDTH AND GAP MAY NEED TO BE MODIFIED.
2. BOTTOM SIDE OF THE PCB IS CONTINUOUS GROUND PLANE.



DENOTES PCB COPPER LAYOUT WITH SMOBC (SOLDER MASK OVER BARE COPPER).



DENOTES COPPER LAND PATTERN FREE OF SOLDER MASK.

UNLESS OTHERWISE SPECIFIED	INITIALS	DATE
DIMENSIONS ARE IN INCHES	MMG	02/13/08
TOLERANCES ON:	AV	02/14/08
2 PL DECIMALS ±	DJ	02/14/08
3 PL DECIMALS ± .005		
ANGLES ±		
FRACTIONS ±		



Mini-Circuits®

13 Neptune Avenue
Brooklyn NY 11235

PL, 08MX05, HV1195, SIM, TB-458+

SIZE A	CODE IDENT 15542	DRAWING NO: 98-PL-284	REV: A
FILE: 98PL284	SCALE: 10:1	SHEET: 1 OF 1	

Mini-Circuits®
THIS DOCUMENT AND ITS CONTENTS ARE THE PROPERTY OF MINI-CIRCUITS. EXCEPT FOR USE EXPRESSLY GRANTED, IN WRITING, TO ITS VENDORS, VENDEE AND THE UNITED STATES GOVERNMENT, MINI-CIRCUITS RESERVES ALL PROPRIETARY DESIGN, USE, MANUFACTURING AND REPRODUCTION RIGHTS THERETO. THESE CONTENTS SHALL NOT BE USED, DUPLICATED OR DISCLOSED TO ANY OUTSIDE PARTY, IN WHOLE OR IN PART, WITHOUT WRITTEN PERMISSION OF MINI-CIRCUITS.