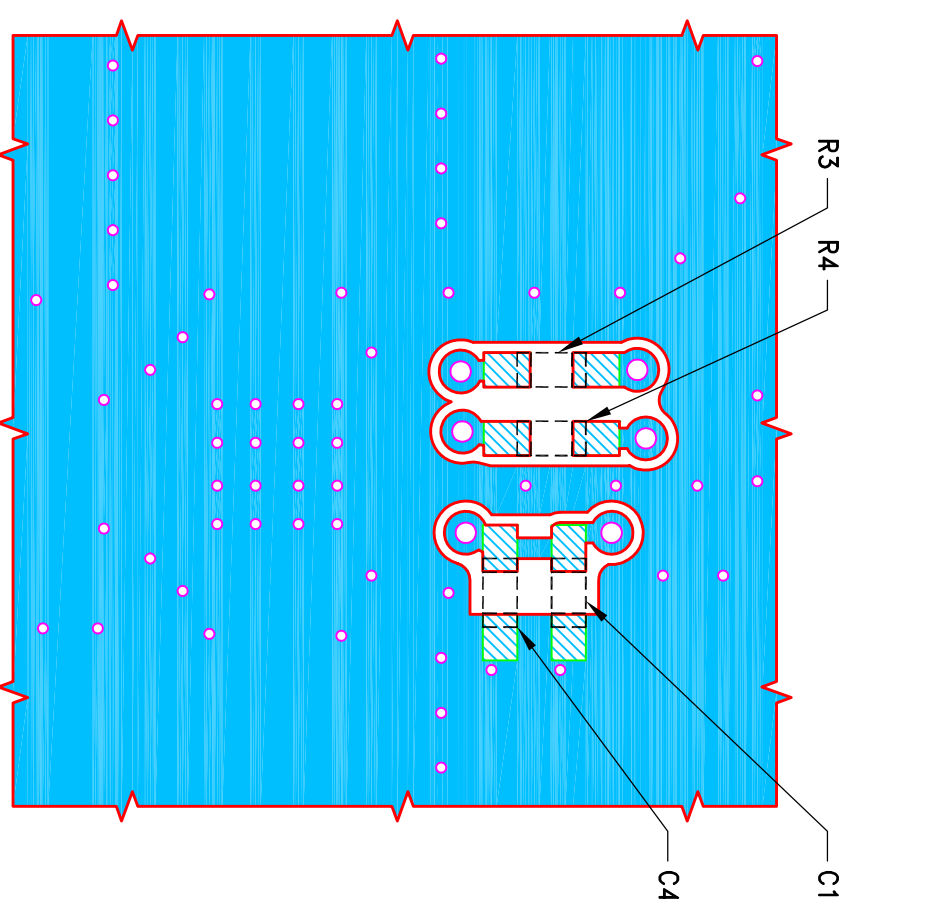
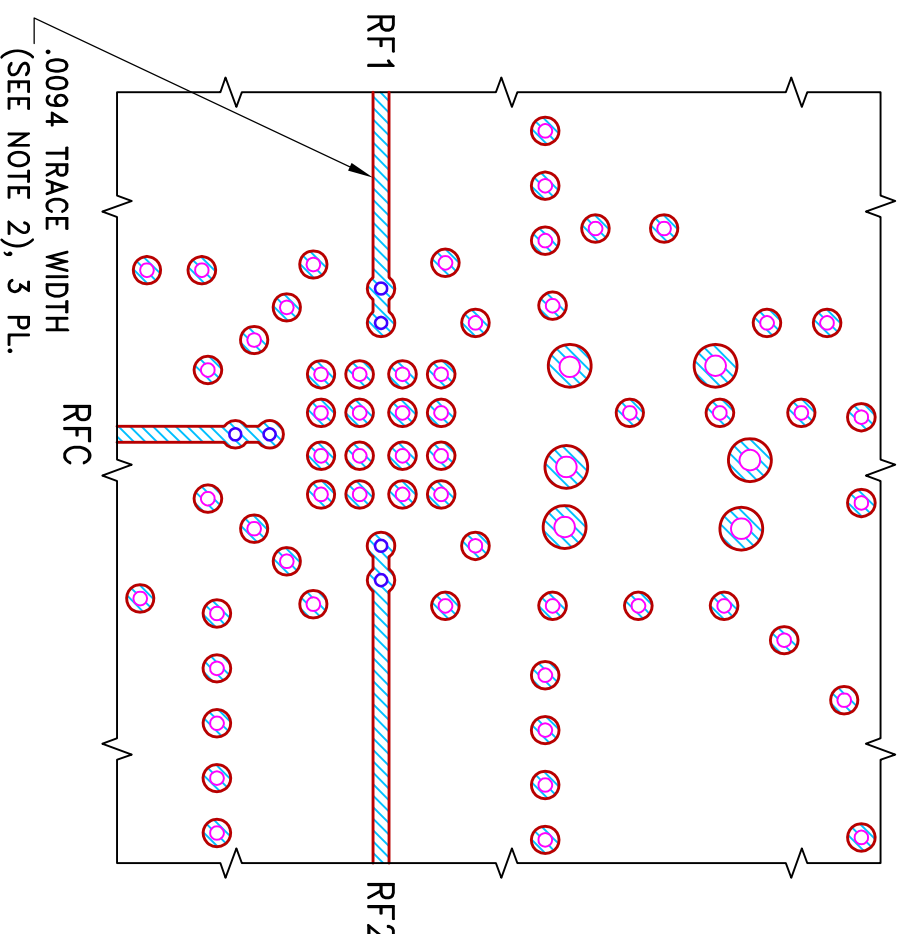
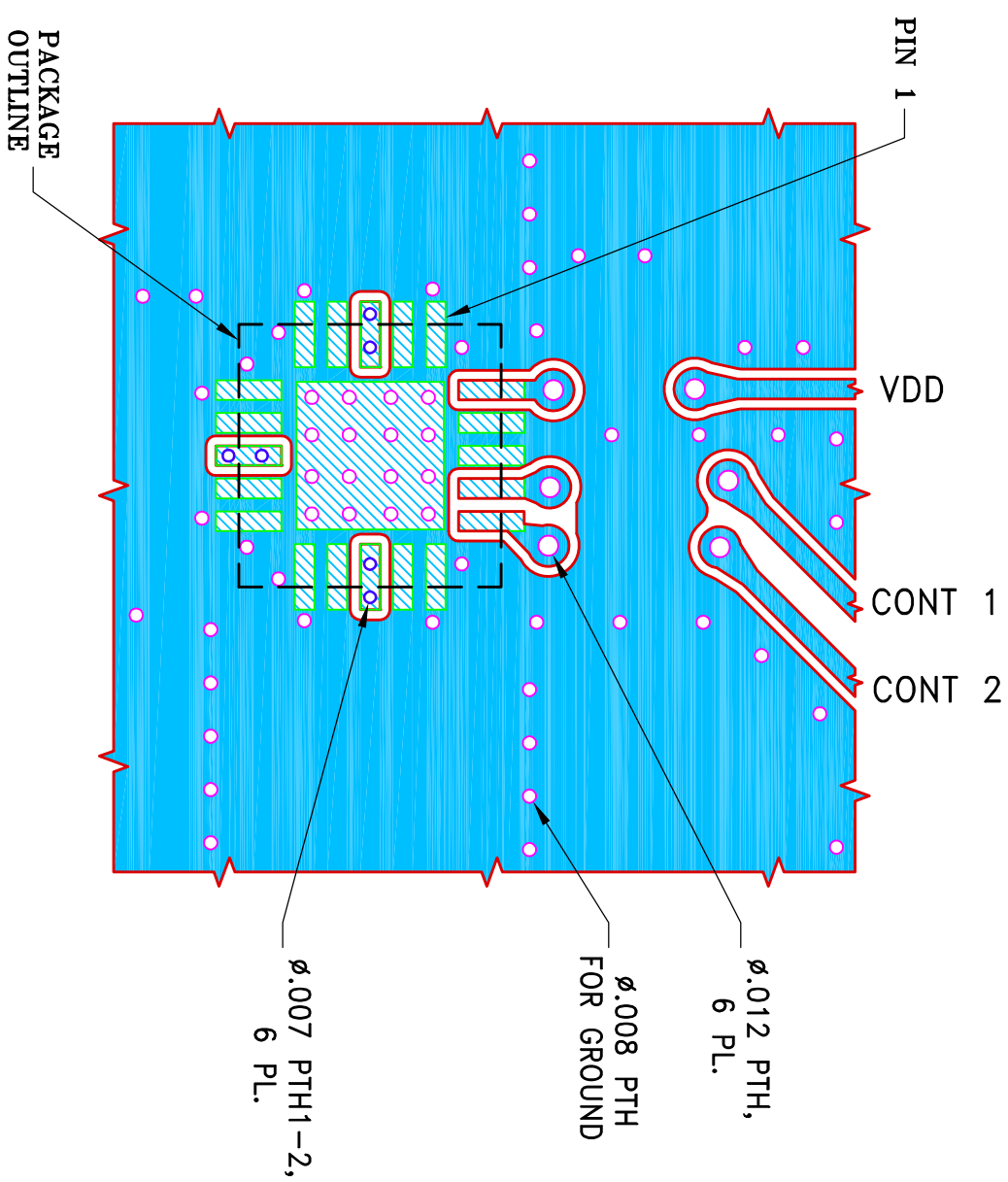


SUGGESTED MOUNTING CONFIGURATION FOR
 DG983-3 CASE STYLE, "20SW01" PIN CODE

COMPONENT	SIZE
C1,C4,R3,R4	0402

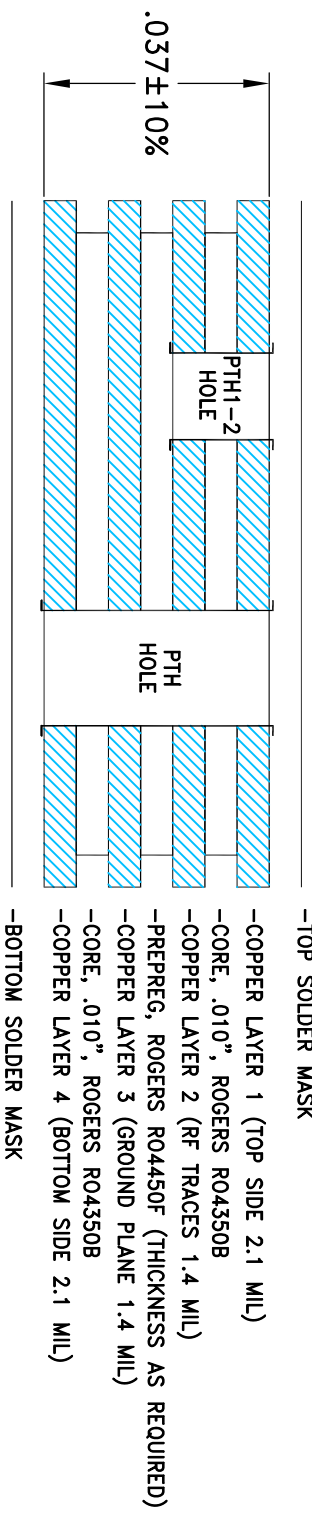


TOP VIEW

COPPER LAYER 2

BOTTOM VIEW

STACK-UP DIAGRAM



-PTH HOLES PRESENT FROM COPPER LAYER 1 TO 4.
 -PTH1-2 HOLES PRESENT FROM COPPER LAYER 1 TO 2.

- TOP SOLDER MASK
- COPPER LAYER 1 (TOP SIDE 2.1 MIL)
- CORE, .010", ROGERS R04350B
- COPPER LAYER 2 (RF TRACES 1.4 MIL)
- PREPREG, ROGERS R04450F (THICKNESS AS REQUIRED)
- COPPER LAYER 3 (GROUND PLANE 1.4 MIL)
- CORE, .010", ROGERS R04350B
- COPPER LAYER 4 (BOTTOM SIDE 2.1 MIL)
- BOTTOM SOLDER MASK

NOTES:

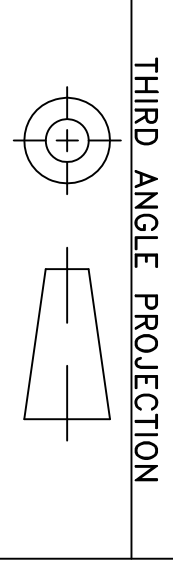
1. PCB IS MULTILAYER PCB, SEE STACK-UP DIAGRAM.
2. TRACE WIDTH IS SHOWN FOR ROGERS R04350B WITH DIELECTRIC THICKNESS .010"±.001"; COPPER: SEE STACK-UP DIAGRAM. FOR OTHER MATERIALS TRACE WIDTH MAY NEED TO BE MODIFIED.
3. CHIP COMPONENT FOOT PRINTS SHOWN FOR REFERENCE.

- DENOTES PCB COPPER LAYOUT WITH SMOBC (SOLDER MASK OVER BARE COPPER)
- DENOTES COPPER LAND PATTERN FREE OF SOLDER MASK

UNLESS OTHERWISE SPECIFIED		INITIALS		DATE	
DIMENSIONS ARE IN INCHES	DRAWN	TTG	04/19/17		
TOLERANCES ON:	CHECKED	IL	04/19/17		
2 PL DECIMALS ±	APPROVED	RS	04/19/17		
3 PL DECIMALS ±					
ANGLES ±					
FRACTIONS ±					

Mini-Circuits
 13 Neptune Avenue
 Brooklyn NY 11235

PL, 20SW01, DG983-3, TB-919+



OR	NEW RELEASE	04/19/17	TTG	RS
REV	M161288	DESCRIPTION	DATE	DR
ECN No.				AUTH

THIS DOCUMENT AND ITS CONTENTS ARE THE PROPERTY OF MINI-CIRCUITS. EXCEPT FOR USE EXPRESSLY GRANTED, IN WRITING, TO ITS VENDORS, VENDORS AND THE UNITED STATES GOVERNMENT, MINI-CIRCUITS RESERVES ALL PROPRIETARY DESIGN USE, MANUFACTURING AND REPRODUCTION RIGHTS THERE TO. THESE CONTENTS SHALL NOT BE USED, DUPLICATED OR DISCLOSED TO ANY OUTSIDE PARTY, IN WHOLE OR IN PART, WITHOUT WRITTEN PERMISSION OF MINI-CIRCUITS.

Mini-Circuits	FILE:	98PL510	SCALE:	8:1	SHEET:	1 OF 1
SIZE	CODE IDENT	15542	DRAWING NO:	98-PL-510	REV:	OR
BSHET1A1.DWG	REV: A	DATE: 01/12/94				