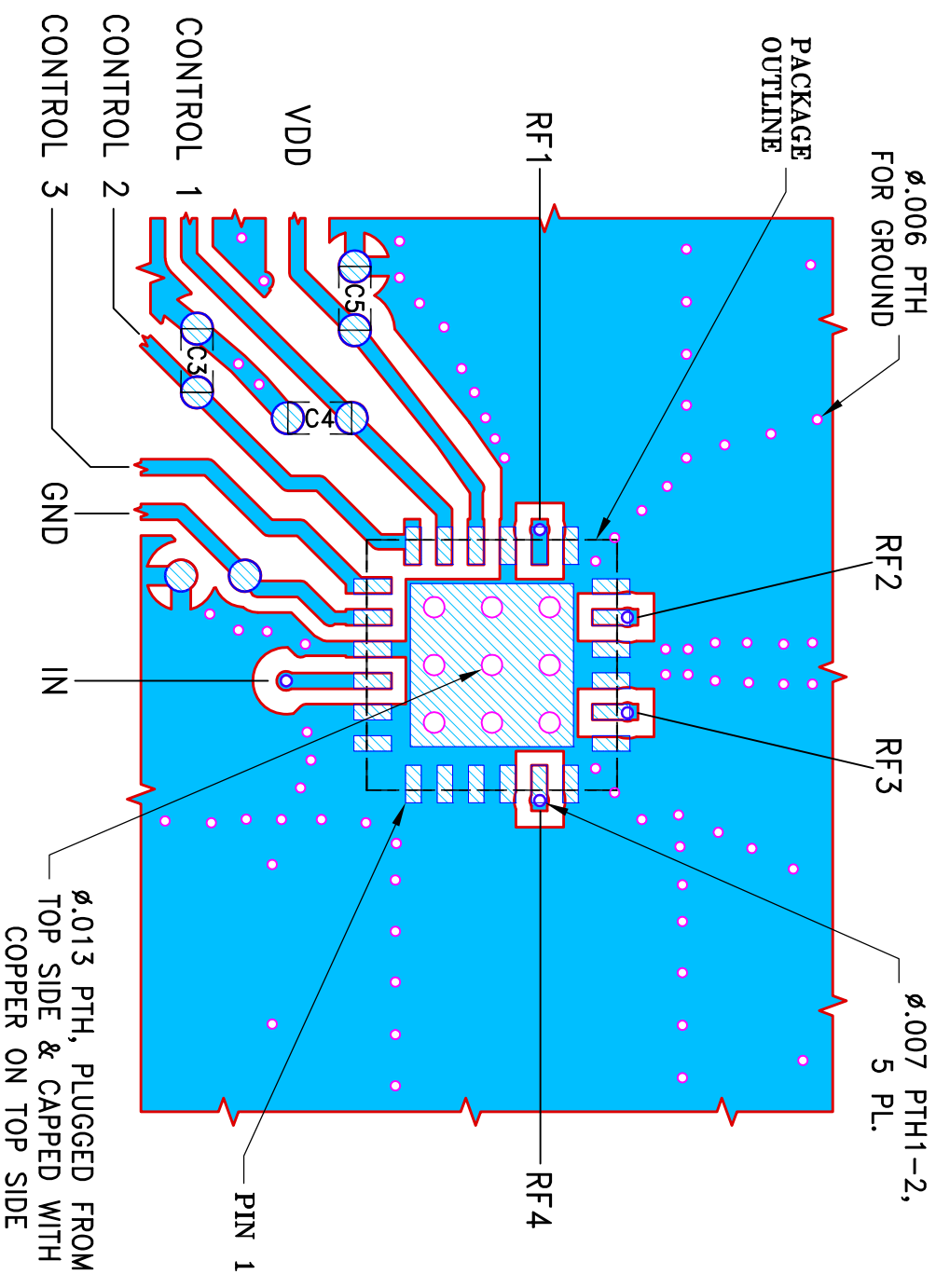
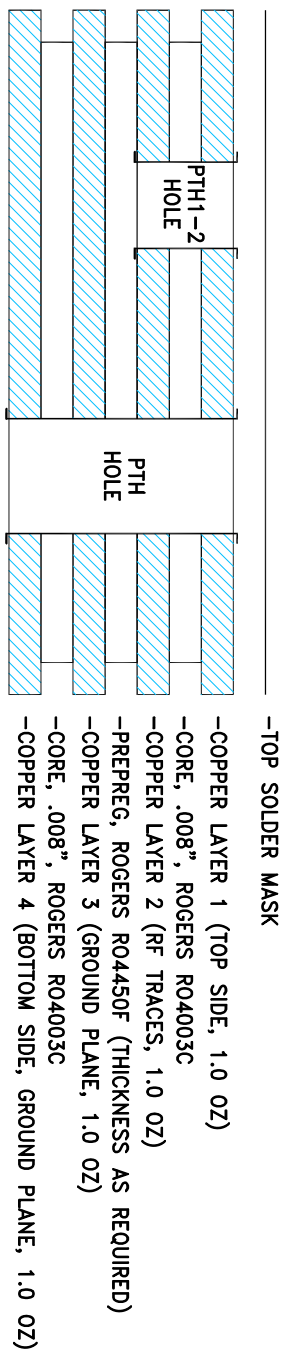


SUGGESTED MOUNTING CONFIGURATION FOR
DG984-1 CASE STYLE, "24SW01" PIN CODE

COMPONENT	SIZE
DUT	4x4mm 24 LEAD MCLP
C3,C4,C5	0402

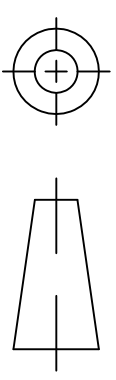


STACK-UP DIAGRAM



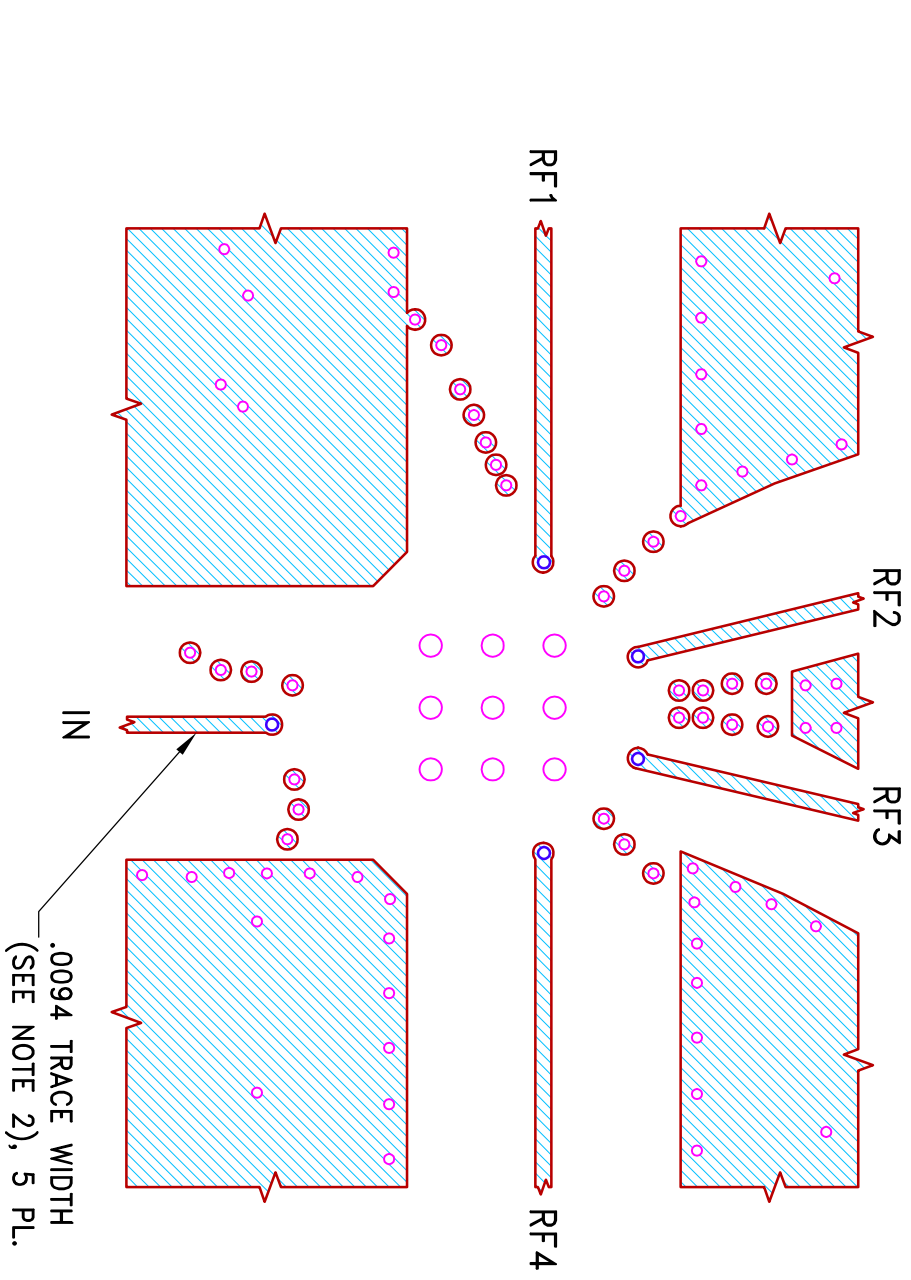
- TOTAL FINISHED THICKNESS 0.035"±10%.
- PTH HOLES PRESENT FROM COPPER LAYER 1 TO 4.
- PTH1-2 HOLES PRESENT FROM COPPER LAYER 1 TO 2.

THIRD ANGLE PROJECTION



REV	ECN No.	DESCRIPTION	DATE	DR	AUTH
A	M167882	CHANGED LABEL ON PIN 20 (WAS VDD)	05/16/18	ITG	IL
OR	M161976	NEW RELEASE	06/22/17	ITG	RS

REVISIONS



NOTES:

- PCB IS MULTILAYER PCB, SEE STACK-UP DIAGRAM.
- TRACE WIDTH IS SHOWN FOR ROGERS RO4003C WITH DIELECTRIC THICKNESS .008"±.001"; COPPER: SEE STACK-UP DIAGRAM. FOR OTHER MATERIALS TRACE WIDTH MAY NEED TO BE MODIFIED.
- CHIP COMPONENT FOOT PRINTS SHOWN FOR REFERENCE.

- DENOTES PCB COPPER LAYOUT WITH SMOBC (SOLDER MASK OVER BARE COPPER)
- DENOTES PCB COPPER LAYOUT WITH SMOBC (SOLDER MASK OVER BARE COPPER)
- DENOTES COPPER LAND PATTERN FREE OF SOLDER MASK

UNLESS OTHERWISE SPECIFIED	INITIALS	DATE
DIMENSIONS ARE IN INCHES	ITG	06/15/17
TOLERANCES ARE:	IL	06/22/17
1 PL. DECIMALS ±	RS	06/22/17
2 PL. DECIMALS ±		
3 PL. DECIMALS ±		
ANGLES ±		
FRACTIONS ±		

PL, 24SW01, DG984-1, TB-927+

Mini-Circuits®
13 Neptune Avenue
Brooklyn NY 11235

THIS DOCUMENT AND ITS CONTENTS ARE THE PROPERTY OF MINI-CIRCUITS. EXCEPT FOR USE EXPRESSLY GRANTED, IN WRITING, TO ITS VENDORS, VENDORS AND THE UNITED STATES GOVERNMENT, MINI-CIRCUITS RESERVES ALL PROPRIETARY DESIGN, USE, MANUFACTURING AND REPRODUCTION RIGHTS THEREOF. THESE CONTENTS SHALL NOT BE USED, DUPLICATED OR DISCLOSED TO ANY OUTSIDE PARTY, IN WHOLE OR IN PART, WITHOUT WRITTEN PERMISSION OF MINI-CIRCUITS.	Mini-Circuits®	FILE: 98PL514	SCALE: 8:1	SHEET: 1 OF 1
SIZE	CODE IDENT	DRAWING NO:	REV:	
B	15542	98-PL-514	A	