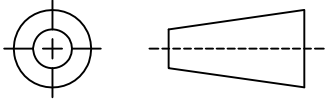


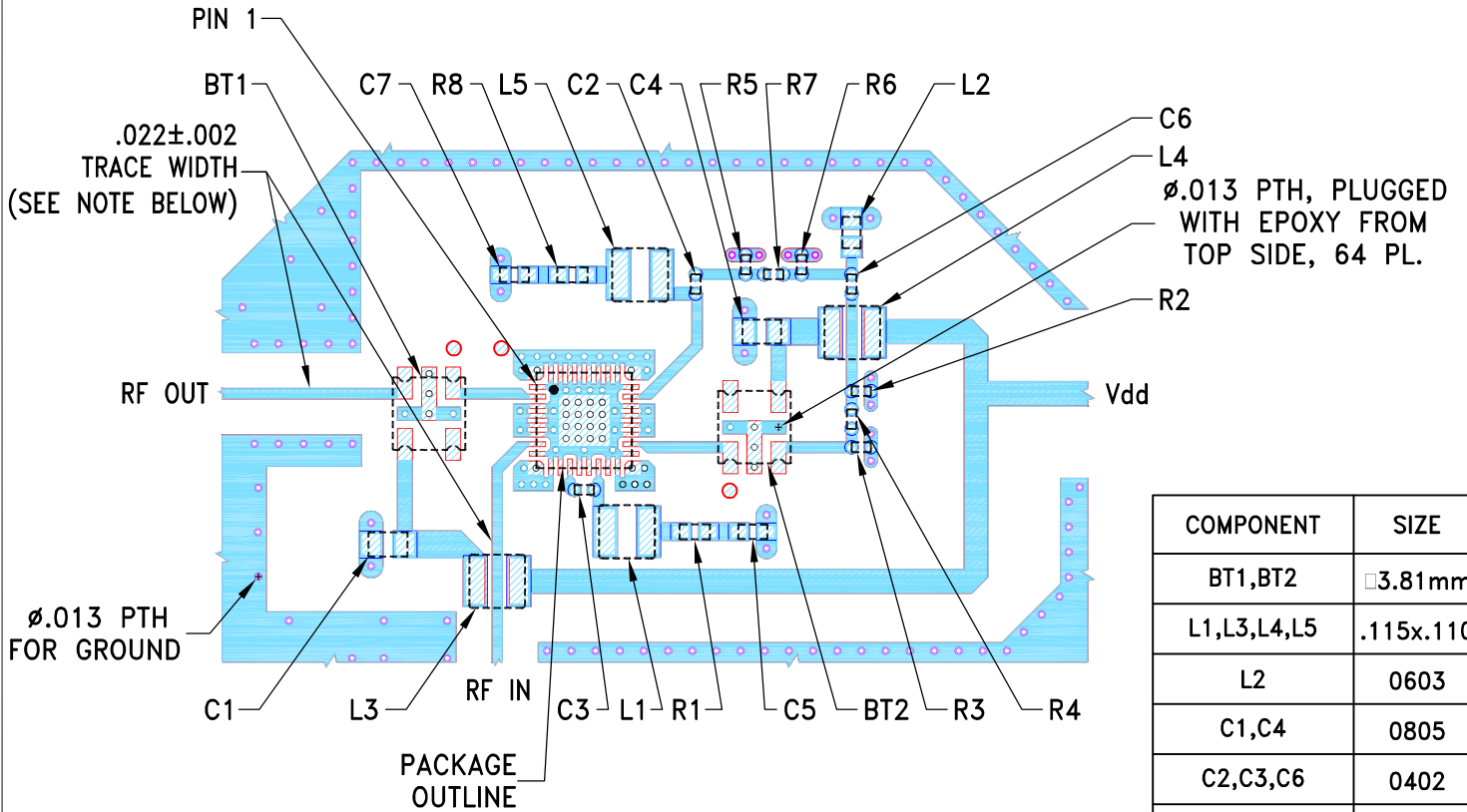
THIRD ANGLE PROJECTION



REVISIONS

REV	ECN No.	DESCRIPTION	DATE	DR	AUTH
OR	M174409	NEW RELEASE	06/03/19	ITG	GH

SUGGESTED MOUNTING CONFIGURATION  
FOR DG1677-2 CASE STYLE



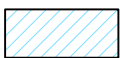
COMPONENT	SIZE
BT1,BT2	□3.81mm
L1,L3,L4,L5	.115x.110
L2	0603
C1,C4	0805
C2,C3,C6	0402
C5,C7	0603
R1,R8	0603
R2...R7	0402

NOTES:

- TRACE WIDTH IS SHOWN FOR ROGERS R04350B WITH DIELECTRIC THICKNESS .010"±.001".  
COPPER: 1/2 OZ. EACH SIDE.  
FOR OTHER MATERIALS TRACE WIDTH MAY NEED TO BE MODIFIED.
- CHIP COMPONENT FOOT PRINTS SHOWN FOR REFERENCE.  
FOR COMPONENT VALUES REFER TO TB-YSIF-421+.
- BOTTOM SIDE OF THE PCB IS CONTINUOUS GROUND PLANE.



DENOTES PCB COPPER LAYOUT WITH SMOBC (SOLDER MASK OVER BARE COPPER).

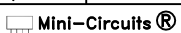


DENOTES COPPER LAND PATTERN FREE OF SOLDER MASK.

UNLESS OTHERWISE SPECIFIED	INITIALS	DATE
DRAWN	ITG	05/22/19
CHECKED	IL	05/31/19
APPROVED	GH	06/03/19

 **Mini-Circuits®** 13 Neptune Avenue  
Brooklyn NY 11235

PL, DG1677-2, TB-YSIF-421+

 Mini-Circuits®  
THIS DOCUMENT AND ITS CONTENTS ARE THE PROPERTY OF MINI-CIRCUITS. EXCEPT FOR USE EXPRESSLY GRANTED, IN WRITING, TO ITS VENDORS, VENDEE AND THE UNITED STATES GOVERNMENT, MINI-CIRCUITS RESERVES ALL PROPRIETARY DESIGN, USE, MANUFACTURING AND REPRODUCTION RIGHTS THERETO. THESE CONTENTS SHALL NOT BE USED, DUPLICATED OR DISCLOSED TO ANY OUTSIDE PARTY, IN WHOLE OR IN PART, WITHOUT WRITTEN PERMISSION OF MINI-CIRCUITS.

SIZE	CODE IDENT	DRAWING NO:	REV:
A	15542	98-PL-635	OR
FILE:	98PL635	SCALE: 2.5:1	SHEET: 1 OF 1