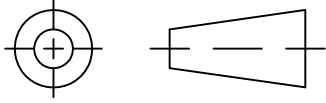


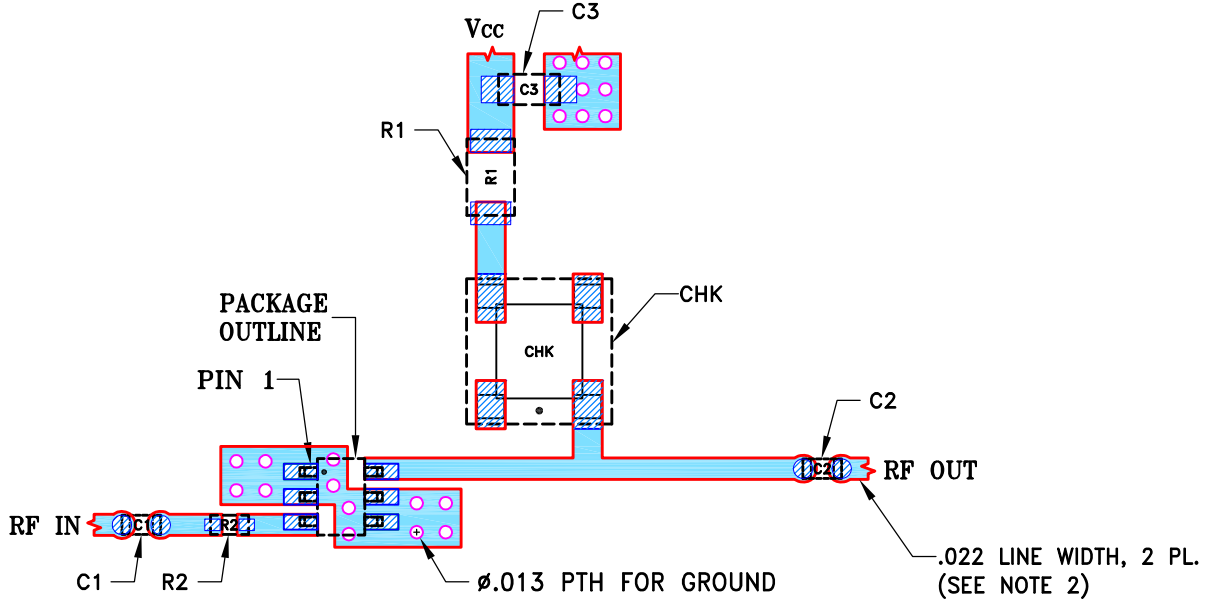
THIRD ANGLE PROJECTION



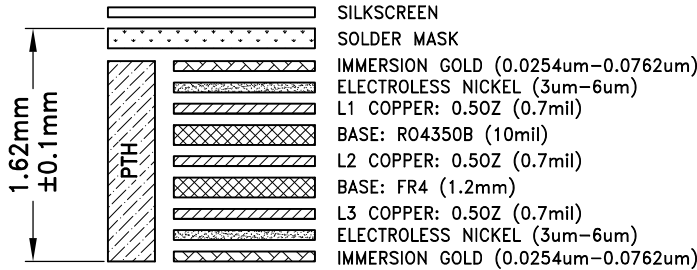
REVISIONS

REV	ECN No.	DESCRIPTION	DATE	DR	AUTH
OR	M175905	NEW RELEASE	08/19/19	ITG	GH

SUGGESTED MOUNTING CONFIGURATION FOR CA1389 CASE STYLE



STACK-UP DIAGRAM

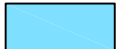


COMPONENT	SIZE
C1,C2	0402
C3	0603
R1	0805
CHK	.150 SQ.
R2	0402

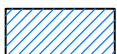
1. TOTAL FINISHED THICKNESS 0.064" ± 10%.
2. PTH HOLES PRESENT FROM COPPER LAYER 1 TO 3.

NOTES:

1. PCB IS MULTILAYER PCB, SEE STACK-UP DIAGRAM.
2. LINE WIDTH IS SHOWN FOR ROGERS R04350B WITH DIELECTRIC THICKNESS .010"±.001"; COPPER: 1/2 OZ. FOR OTHER MATERIALS LINE WIDTH MAY NEED TO BE MODIFIED.
3. CHIP COMPONENT FOOT PRINTS SHOWN FOR REFERENCE. FOR COMPONENT VALUES REFER TO TB-PSA-8A+.
4. COPPER LAYERS L2 & L3 OF THE PCB ARE CONTINUOUS GROUND PLANES.



DENOTES PCB COPPER LAYOUT WITH SMOBC (SOLDER MASK OVER BARE COPPER)



DENOTES COPPER LAND PATTERN FREE OF SOLDER MASK

UNLESS OTHERWISE SPECIFIED	INITIALS	DATE
DIMENSIONS ARE IN INCHES	ITG	08/15/19
TOLERANCES ON:	GF	08/16/19
2 PL DECIMALS ±	GH	08/19/19
3 PL DECIMALS ± .005		
ANGLES ±		
FRACTIONS ±		



Mini-Circuits®

13 Neptune Avenue
Brooklyn NY 11235

PL, CA1389, TB-PSA-8A+

SIZE	CODE IDENT	DRAWING NO:	REV:
A	15542	98-PL-643	OR
FILE:	98PL643	SCALE:	SHEET:
		5:1	1 OF 1

THIS DOCUMENT AND ITS CONTENTS ARE THE PROPERTY OF MINI-CIRCUITS. EXCEPT FOR USE EXPRESSLY GRANTED, IN WRITING, TO ITS VENDORS, VENDEE AND THE UNITED STATES GOVERNMENT, MINI-CIRCUITS RESERVES ALL PROPRIETARY DESIGN, USE, MANUFACTURING AND REPRODUCTION RIGHTS THERETO. THESE CONTENTS SHALL NOT BE USED, DUPLICATED OR DISCLOSED TO ANY OUTSIDE PARTY, IN WHOLE OR IN PART, WITHOUT WRITTEN PERMISSION OF MINI-CIRCUITS.