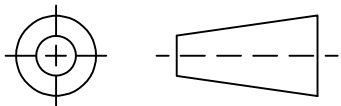


THIRD ANGLE PROJECTION

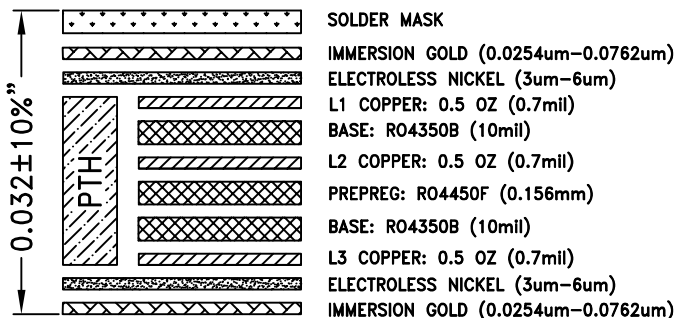


REVISIONS

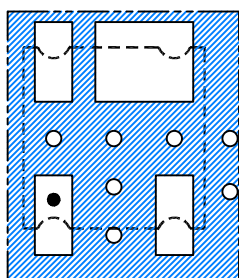
REV	ECN No.	DESCRIPTION	DATE	DR	AUTH
OR	ECO-015833	NEW RELEASE	11/23/22	ITG	IL

SUGGESTED MOUNTING CONFIGURATION FOR MC1631-1 CASE STYLE

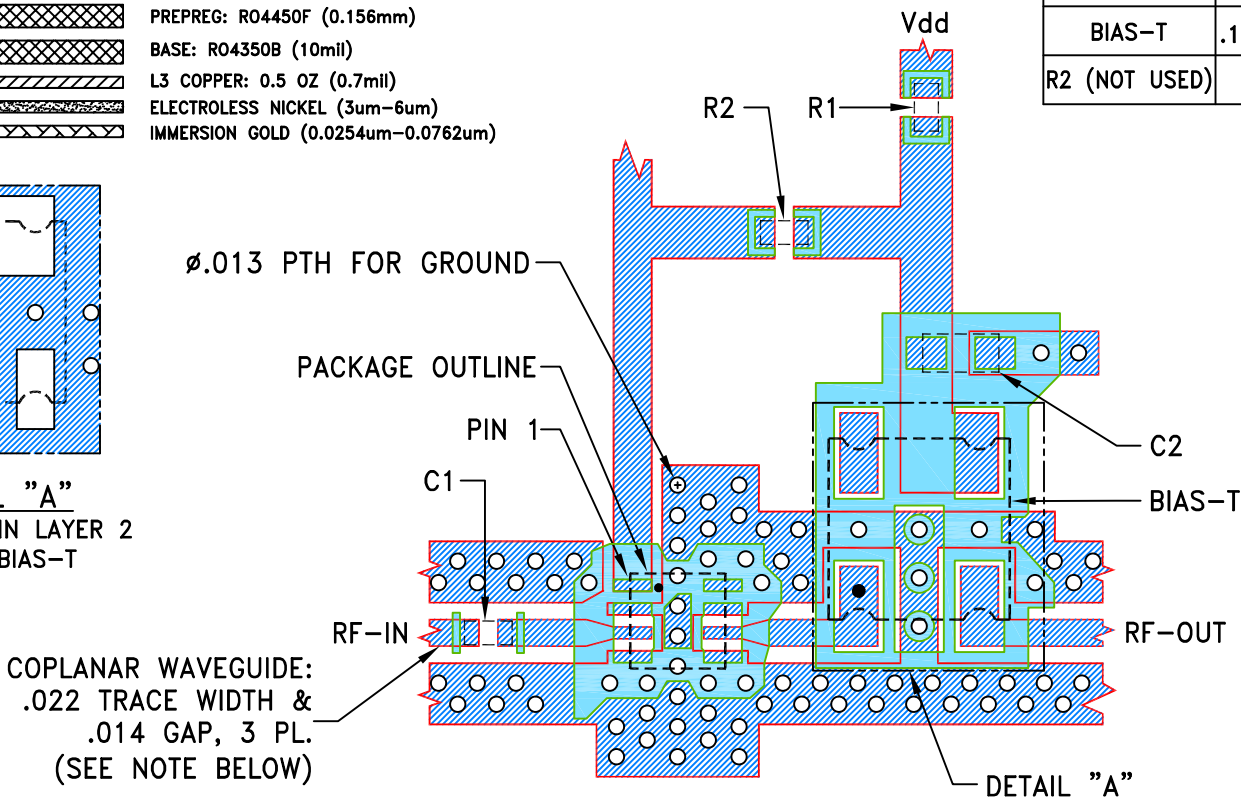
3 LAYER STACK-UP DETAIL



COMPONENT	SIZE
C1	0402
C2	0603
R1	0402
BIAS-T	.15X.15"
R2 (NOT USED)	0402



DETAIL "A"
SCRATCHES IN LAYER 2
UNDER BIAS-T

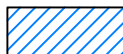


NOTES:

1. PCB IS MULTILAYER PCB, SEE STACK-UP DIAGRAM.
2. TRACE WIDTH & GAP ARE SHOWN FOR ROGERS RO4350B WITH DIELECTRIC THICKNESS .010".
COPPER: 1/2 OZ. EACH LAYER. FOR OTHER MATERIALS TRACE WIDTH & GAP MAY NEED TO BE MODIFIED.
3. CHIP COMPONENT FOOT PRINTS SHOWN FOR REFERENCE, FOR COMPONENT VALUES REFER TO TB-PMA2123LN5E+.
4. LAYER 2 OF PCB IS CONTINUOUS GROUND PLANE EXCEPT SCRATCHES (SEE DETAIL "A").
5. LAYER 3 OF PCB IS CONTINUOUS GROUND PLANE.



DENOTES PCB COPPER LAYOUT WITH SMOBC (SOLDER MASK OVER BARE COPPER).



DENOTES COPPER LAND PATTERN FREE OF SOLDER MASK.

UNLESS OTHERWISE SPECIFIED	INITIALS	DATE
DIMENSIONS ARE IN INCHES	ITG	11/22/22
TOLERANCES ON:	GF	11/22/22
2 PL DECIMALS ±	IL	11/23/22
3 PL DECIMALS ± .005		
ANGLES ±		
FRACTIONS ±		

Mini-Circuits®

THIS DOCUMENT AND ITS CONTENTS ARE THE PROPERTY OF MINI-CIRCUITS. EXCEPT FOR USE EXPRESSLY GRANTED, IN WRITING, TO ITS VENDORS, VENDEE AND THE UNITED STATES GOVERNMENT, MINI-CIRCUITS RESERVES ALL PROPRIETARY DESIGN, USE, MANUFACTURING AND REPRODUCTION RIGHTS THERETO. THESE CONTENTS SHALL NOT BE USED, DUPLICATED OR DISCLOSED TO ANY OUTSIDE PARTY, IN WHOLE OR IN PART, WITHOUT WRITTEN PERMISSION OF MINI-CIRCUITS.



Mini-Circuits®

13 Neptune Avenue
Brooklyn NY 11235

PL, MC1631-1, TB-PMA2123LN5E+

SIZE	CODE IDENT	DRAWING NO:	REV:
A	15542	98-PL-745	OR
FILE:	98PL745	SCALE: 6:1	SHEET: 1 OF 1