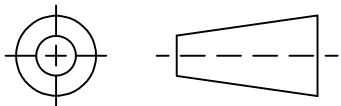


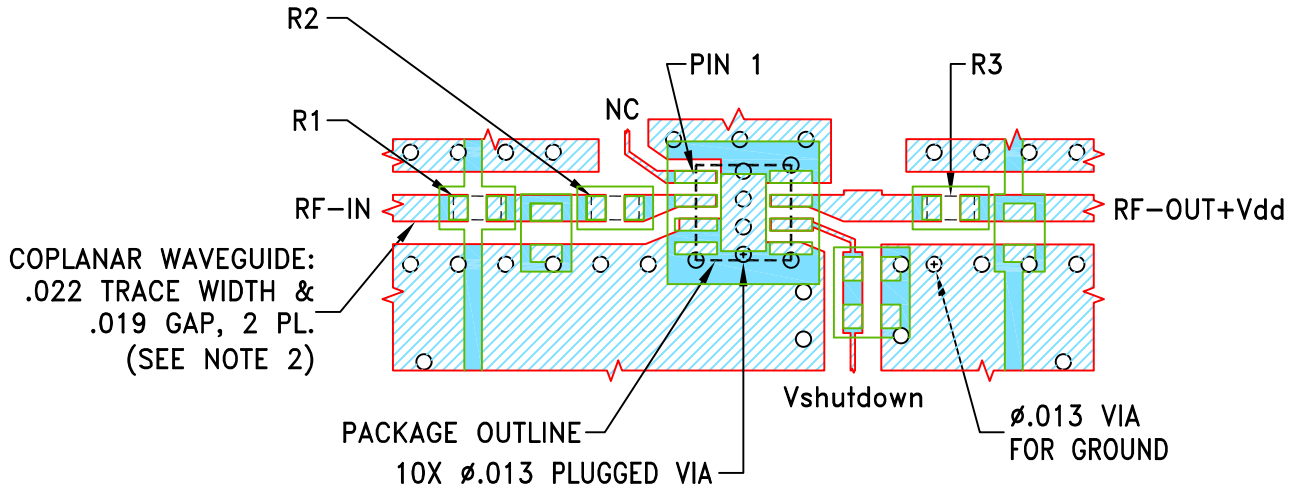
THIRD ANGLE PROJECTION



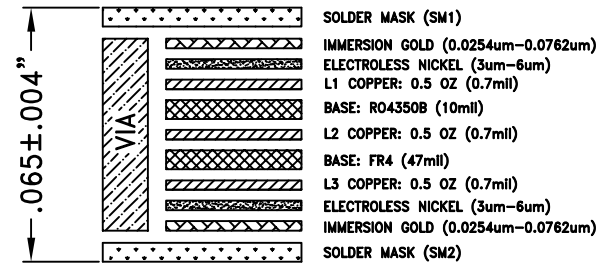
REVISIONS

REV	ECN No.	DESCRIPTION	DATE	DR	AUTH
OR	ECO-027688	NEW RELEASE	11/17/25	ITG	IL

SUGGESTED MOUNTING CONFIGURATION
FOR MC1631-1 CASE STYLE



3 LAYER STACK-UP DETAIL



COMPONENT	SIZE
R1-R3	0402

- NOTES:**
1. PCB IS MULTILAYER PCB, SEE STACK-UP DIAGRAM.
 2. TRACE WIDTH & GAP ARE SHOWN FOR ROGERS RO4350B WITH DIELECTRIC THICKNESS .010".
COPPER: 1/2 OZ. EACH LAYER. FOR OTHER MATERIALS TRACE WIDTH & GAP MAY NEED TO BE MODIFIED.
 3. CHIP COMPONENT FOOT PRINTS SHOWN FOR REFERENCE, FOR COMPONENT VALUES REFER TO TB-TSS-43ULNC+.
 4. LAYERS 2 & 3 OF PCB ARE CONTINUOUS GROUND PLANE.
 5. UNIT LAND PATTERN WAS OPTIMIZED FOR BETTER PERFORMANCE.

- DENOTES PCB COPPER LAYOUT WITH SMOBC (SOLDER MASK OVER BARE COPPER).
- DENOTES COPPER LAND PATTERN FREE OF SOLDER MASK.

UNLESS OTHERWISE SPECIFIED	INITIALS	DATE
DIMENSIONS ARE IN INCHES	ITG	11/17/25
TOLERANCES ON:	GF	11/17/25
2 PL DECIMALS ±	APPROVED	11/17/25
3 PL DECIMALS ± .005		
ANGLES ±		
FRACTIONS ±		

Mini-Circuits[®] 13 Neptune Avenue
Brooklyn NY 11235

PL, MC1631-1, TB-TSS-43ULNC+

SIZE A	CODE IDENT 15542	DRAWING NO: 98-PL-844	REV: OR
FILE: 98PL844	SCALE: 6:1	SHEET: 1 OF 1	

Mini-Circuits[®]
THIS DOCUMENT AND ITS CONTENTS ARE THE PROPERTY OF MINI-CIRCUITS. EXCEPT FOR USE EXPRESSLY GRANTED, IN WRITING, TO ITS VENDORS, VENDEE AND THE UNITED STATES GOVERNMENT, MINI-CIRCUITS RESERVES ALL PROPRIETARY DESIGN, USE, MANUFACTURING AND REPRODUCTION RIGHTS THERETO. THESE CONTENTS SHALL NOT BE USED, DUPLICATED OR DISCLOSED TO ANY OUTSIDE PARTY, IN WHOLE OR IN PART, WITHOUT WRITTEN PERMISSION OF MINI-CIRCUITS.