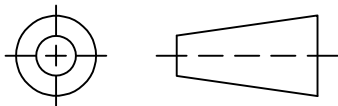


THIRD ANGLE PROJECTION

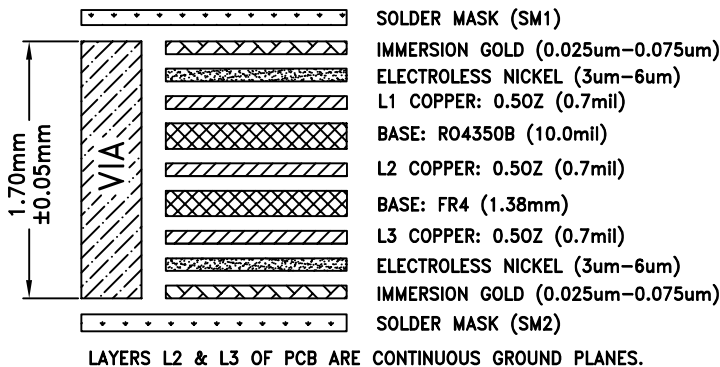


REVISIONS

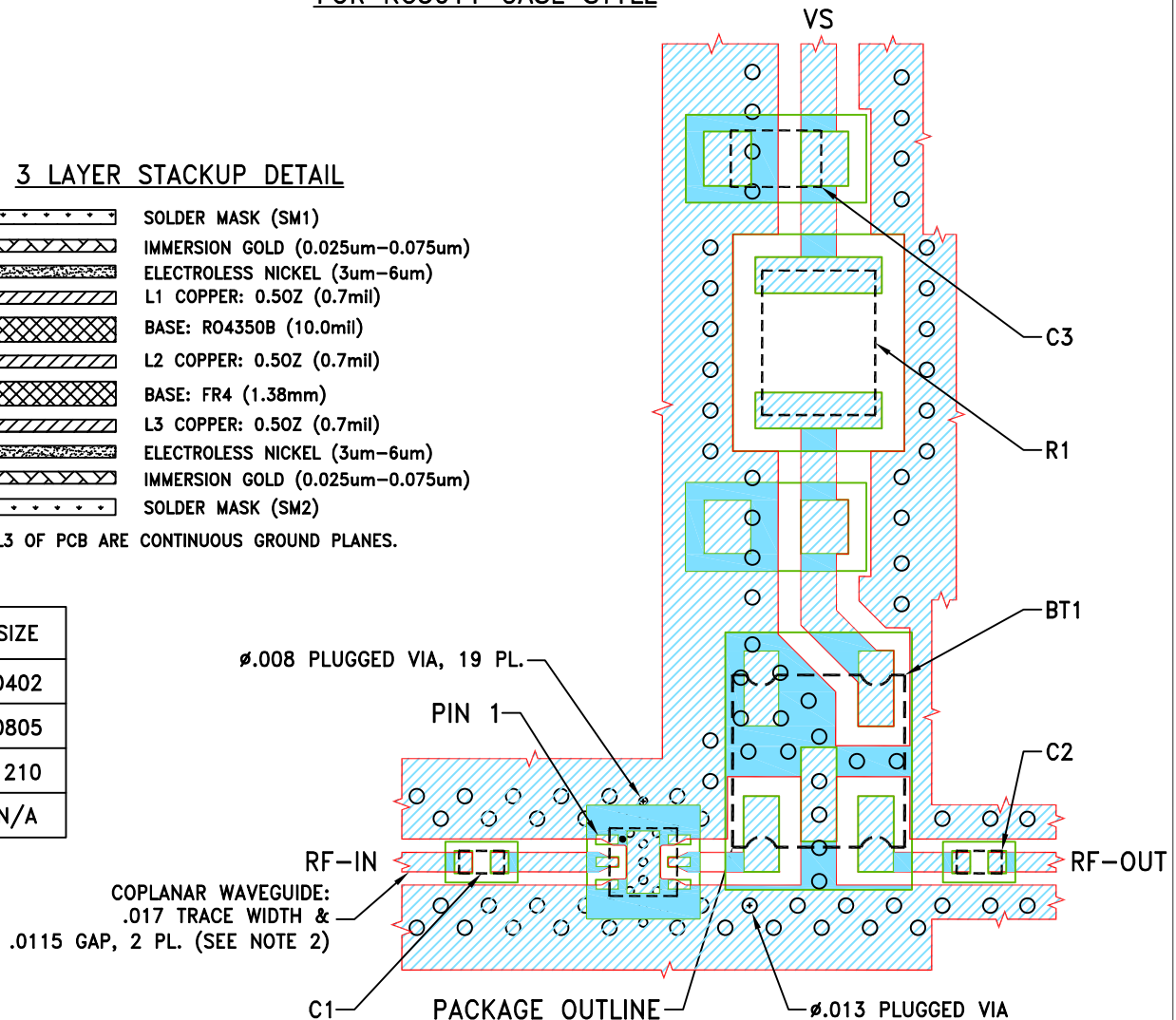
REV	ECN No.	DESCRIPTION	DATE	DR	AUTH
OR	ECO-028458	NEW RELEASE	02/09/26	ITG	IL

SUGGESTED MOUNTING CONFIGURATION FOR KC3011 CASE STYLE

3 LAYER STACKUP DETAIL



COMPONENT	SIZE
C1, C2	0402
C3	0805
R1	1210
BT1	N/A



NOTES:

- PCB IS MULTILAYER PCB, SEE STACK-UP DIAGRAM.
- TRACE WIDTH & GAP ARE SHOWN FOR ROGERS R04350B WITH DIELECTRIC THICKNESS .010", COPPER: .5 OZ. EACH LAYER. FOR OTHER MATERIALS TRACE WIDTH & GAP MAY NEED TO BE MODIFIED.
- CHIP COMPONENT FOOT PRINTS SHOWN FOR REFERENCE. FOR COMPONENT VALUES REFER TO TB-LEE1-XX+, WHERE XX=6, 39 & 63.



DENOTES PCB COPPER LAYOUT WITH SMOBC (SOLDER MASK OVER BARE COPPER).



DENOTES COPPER LAND PATTERN FREE OF SOLDER MASK.

UNLESS OTHERWISE SPECIFIED	INITIALS	DATE
DIMENSIONS ARE IN INCHES	ITG	02/09/26
TOLERANCES ON:	NP	02/09/26
2 PL DECIMALS ±	IL	02/09/26
3 PL DECIMALS ± .005		
ANGLES ±		
FRACTIONS ±		

Mini-Circuits®

THIS DOCUMENT AND ITS CONTENTS ARE THE PROPERTY OF MINI-CIRCUITS. EXCEPT FOR USE EXPRESSLY GRANTED, IN WRITING, TO ITS VENDORS, VENDEE AND THE UNITED STATES GOVERNMENT, MINI-CIRCUITS RESERVES ALL PROPRIETARY DESIGN, USE, MANUFACTURING AND REPRODUCTION RIGHTS THERETO. THESE CONTENTS SHALL NOT BE USED, DUPLICATED OR DISCLOSED TO ANY OUTSIDE PARTY, IN WHOLE OR IN PART, WITHOUT WRITTEN PERMISSION OF MINI-CIRCUITS.



Mini-Circuits®

13 Neptune Avenue  
Brooklyn NY 11235

PL, KC3011, TB-LEE1-XXC+

SIZE	CODE IDENT	DRAWING NO:	REV:
A	15542	98-PL-851	OR
FILE:	98PL851	SCALE: 6:1	SHEET: 1 OF 1