

PRODUCT CHANGE NOTICE
PCN Form (D4-E000-73)**PCN#11-011****NOTIFICATION DATE: August 4, 2011****MODEL(S) AFFECTED:**

ZFSC-8-1+, ZFSC-8-1-75, ZFSC-8-1-75+, ZFSC-8-1-S, ZFSC-8-1-S+, ZFSC-8-4,
ZFSC-8-4+, ZFSC-8-4-75, ZFSC-8-4-75+, ZFSC-8-4-S+, ZFSC-8-43+, ZFSC-8-43-S+,
ZFSC-8375, ZFSC-84-75+

EXTENT OF CHANGE:

R29 case style: Dimension C increased from 1.50" (38.10mm) to 1.57" (39.88mm)
Dimension J increased from .40" (10.16mm) to .43" (10.92mm)
Dimension P increased from .72" (18.29mm) to .79" (20.06mm)
Dimension Q increased from .062" (1.53mm) to .13" (3.18mm)

EFFECT OF CHANGE:

Total height increase by .070" (1.78mm)
Connectors standing increase by .040" (1.02mm)

REASON FOR CHANGE:

Implementation of a more rugged bracket

EFFECTIVE DATE OF CHANGE:

Sept 2010

DELIVERY:

In transition period parts with height 1.50" and 1.57" can be shipped concurrently

ATTACHMENTS:

Case Style Drawing 98-R29

QUESTIONS?**PLEASE CONTACT US.**

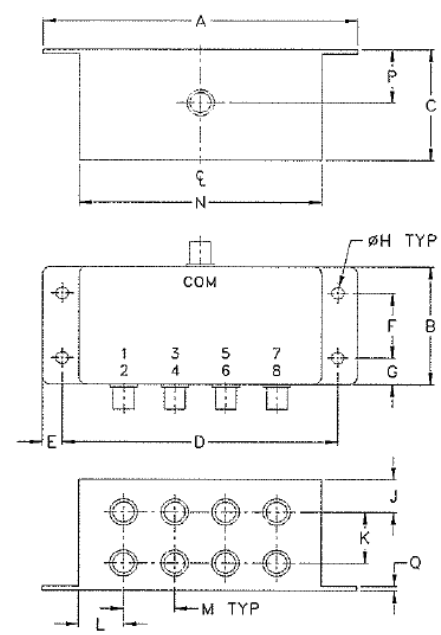
□
PRODUCT CHANGE NOTICE
 PCN Form (D4-E000-73)

Attachment to **PCN#11-011**

OLD - CASE STYLE DRAWING: R29 (Rev. C)

R29

Outline Dimensions



| CASE# | A | B | C | D | E | F | G | H | J | K | L | M | N |
|-------|------------------|-----------------|-----------------|-----------------|---------------|----------------|---------------|----------------|----------------|----------------|----------------|----------------|-----------------|
| R29 | 4.06 (103.12) | 1.60 (40.64) | 1.50 (38.10) | 3.56 (90.42) | .24 (6.10) | .88 (22.35) | .36 (9.14) | .160 (4.06) | .40 (10.16) | .69 (17.53) | .58 (14.73) | .66 (16.76) | 3.13 (79.50) |

| CASE# | P | Q | WT. GRAMS |
|-------|----------------|---------------|-----------|
| R29 | .72 (18.29) | .06 (1.53) | 200.0 |

Dimensions are in inches (mm). Tolerances: 2 Pl. ± .03; 3 Pl. ± .015

Notes:

1. Case material: Aluminum alloy.
2. Case finish:

| | |
|---------------------------|---|
| For RoHS Case Styles: | Clear chemical conversion coating, non-chrome or trivalent chrome based. |
| For Non-RoHS Case Styles: | Yellow hexavalent chrome based conversion coating. Due to transition from non-RoHS to RoHS, models will be supplied with either case style finish until the non-RoHS case inventory is depleted. |

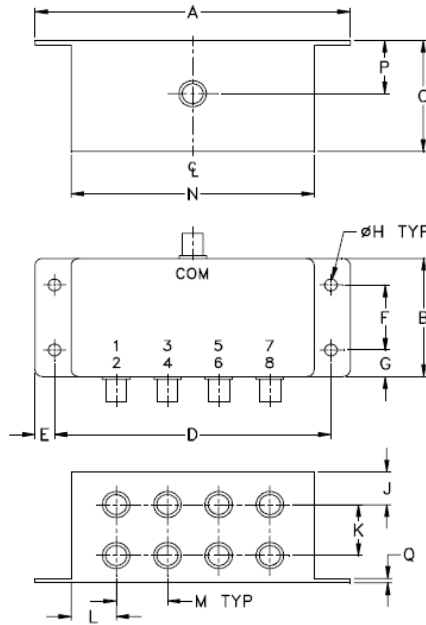
□
PRODUCT CHANGE NOTICE
 PCN Form (D4-E000-73)

Attachment to **PCN#11-011**

NEW - CASE STYLE DRAWING: R29 (Rev. D)

R29

Outline Dimensions



| CASE# | A | B | C | D | E | F | G | H | J | K | L | M | N |
|-------|------------------|-----------------|-----------------|-----------------|---------------|----------------|---------------|----------------|----------------|----------------|----------------|----------------|-----------------|
| R29 | 4.06 (103.12) | 1.60 (40.64) | 1.57 (39.88) | 3.56 (90.42) | .24 (6.10) | .88 (22.35) | .36 (9.14) | .160 (4.06) | .43 (10.92) | .69 (17.53) | .58 (14.73) | .66 (16.76) | 3.13 (79.50) |

| CASE# | P | Q | WT. GRAMS |
|-------|----------------|---------------|-----------|
| R29 | .79 (20.07) | .13 (3.18) | 200.0 |

Dimensions are in inches (mm). Tolerances: 2 Pl. ± .03; 3 Pl. ± .015

Notes:

1. Case material: Aluminum alloy.
2. Case finish:

For RoHS Case Styles:

Clear chemical conversion coating, non-chrome or trivalent chrome based.

For Non-RoHS Case Styles:

Yellow hexavalent chrome based conversion coating.

Due to transition from non-RoHS to RoHS, models will be supplied with either case style finish until the non-RoHS case inventory is depleted.