



Mini-Circuits

THIN FILM SURFACE MOUNT

Bandpass Filter

ABF-22R8G+

50Ω

22.3 to 23.3 GHz

KEY FEATURES

- Low Passband Insertion Loss of 1.5 dB Typ.
- High Rejection of 58 dB Typ.
- Good Return Loss of 15 dB Typ.
- Small Size, 4.48 x 9.48 x 2.36 mm

APPLICATIONS

- Fixed Wireless Access
- mmWave

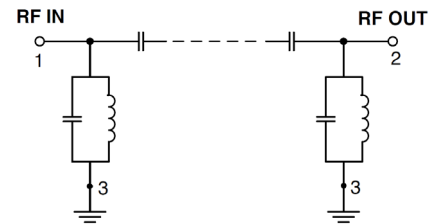


Generic photo used for illustration purposes only

PRODUCT OVERVIEW

Mini-Circuits' Surface Mount Thin-Film filters offer low insertion loss and high rejection realized via Thin-Film on Alumina substrate, using a sputtering process that can guarantee an enhanced Q and repeatable performance. Low pass, high pass, and bandpass surface mount thin-film designs can be realized with this technology up to 40 GHz in a small form factor helping customers achieve their SWaP objectives. Using our high quality thin-film manufacturing process we can guarantee repeatability on large batches of filters.

FUNCTIONAL DIAGRAM

ELECTRICAL SPECIFICATIONS^{1,2,3} AT +25°C

Parameter		F#	Frequency (GHz)	Min.	Typ.	Max.	Units
Passband	Center Frequency ⁴	—	—	—	22.8	—	GHz
	Insertion Loss	F1-F2	22.3 - 23.3	—	1.5	2.5	dB
	Return Loss	F1-F2	22.3 - 23.3	—	15	—	dB
Stopband Lower	Rejection	DC-F3	DC - 18	45	52	—	dB
		F3-F4	18 - 19.6	35	44	—	
		F4-F5	19.6 - 20.3	20	24	—	
Stopband, Upper	Rejection	F6-F7	25.6 - 26.4	20	28	—	dB
		F7-F8	26.4 - 27	30	40	—	
		F8-F9	27 - 29	40	58	—	
		F9-F10	29 - 33.5	—	30	—	

1. Tested on Evaluation Board P/N TB-ABF-22R8G+ with feedline losses removed by normalization of S12 and S21 traces to measurement of TB thru-line.

2. This filter is bi-directional RF1 and RF2 ports may be interchanged, see S-Parameters for actual performance.

3. This component is not intended for use as a DC-blocking circuit element. In applications where DC voltage and/or current is present at either the input or output ports, external DC blocking capacitors are required.

4. Typical variation $\pm 3\%$.

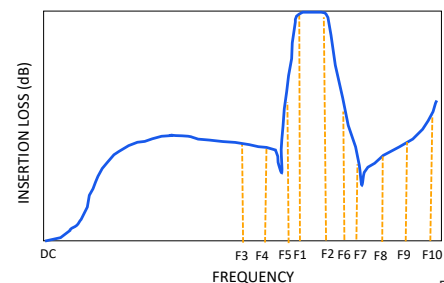
ABSOLUTE MAXIMUM RATINGS⁵

Parameter	Ratings
Operating Temperature	-55°C to +125°C
Storage Temperature	-55°C to +125°C
Input Power ⁶	1 W Max. at 25°C

5. Permanent damage may occur if any of these limits are exceeded.

6. Power rating applies only to signals within the passband.

TYPICAL FREQUENCY RESPONSE AT +25°C



Mini-Circuits

www.minicircuits.com P.O. Box 350166, Brooklyn, NY 11235-0003 (718) 934-4500 sales@minicircuits.com

REV. OR
ECO-026025
ABF-22R8G+
EDU5080
URJ
250627

PAGE 1 OF 6



Mini-Circuits

THIN FILM SURFACE MOUNT

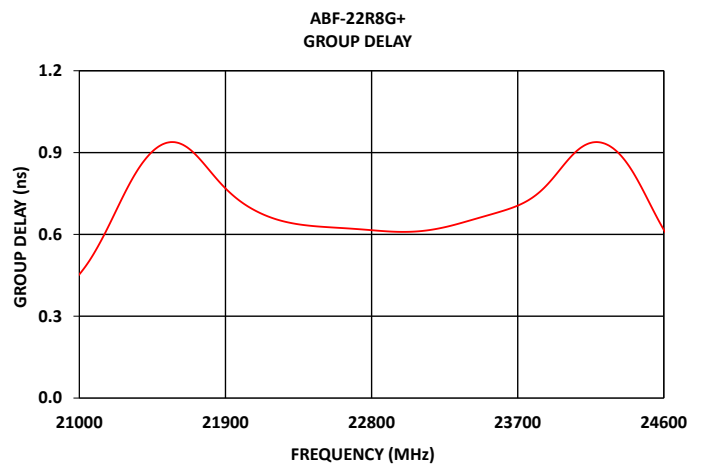
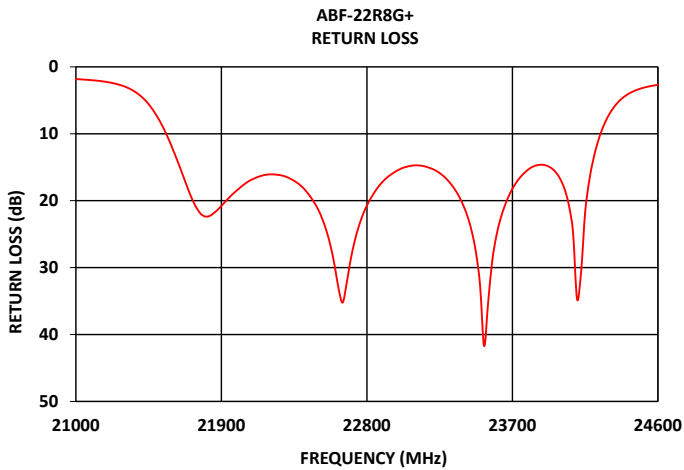
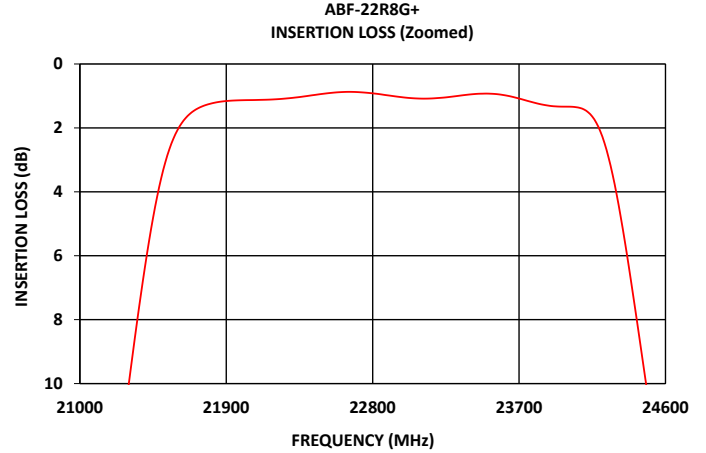
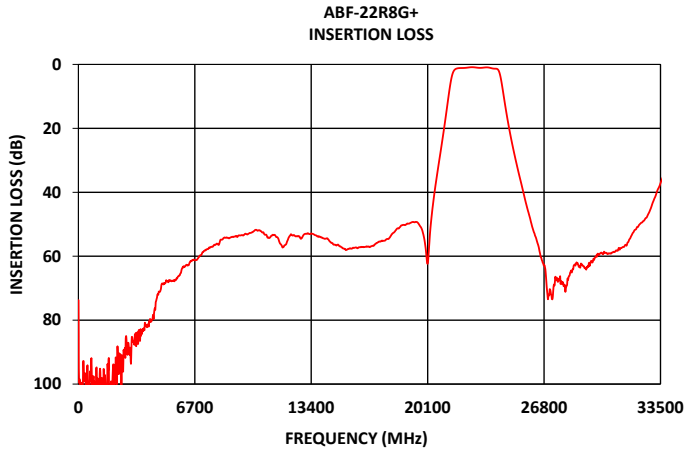
Bandpass Filter

ABF-22R8G+

50 Ω

22.3 to 23.3 GHz

TYPICAL PERFORMANCE GRAPHS AT +25°C





Bandpass Filter

ABF-22R8G+

50Ω

22.3 to 23.3 GHz

PAD DESCRIPTION

Function	Pad Number	Description
RF1 ²	1	Connects to RF Input Port
RF2 ²	2	Connects to RF Output Port
GROUND	3	Connects to Ground on PCB, (See drawing PL-778)
NC	—	No connection, not used internally. See drawing PL-778 for connection to PCB

This diagram provides a detailed view of the package outline, highlighting specific dimensions and features:

- PIN 1**: The location of the first pin is indicated.
- INDEX**: A feature used for orientation during assembly.
- #.013 TYP PLUGGED PTH**: Dimension indicating the typical diameter of plugged through holes.
- #.008 TYP PLUGGED PTH**: Dimension indicating the typical diameter of smaller plugged through holes.
- 4x.015±.0005 SPACE WIDTH**: Dimension indicating the width of four spaces between features.
- 2x.015±.0005 TRACE WIDTH**: Dimension indicating the width of two traces.
- .192**: Overall vertical dimension of the central area.
- .296**: Horizontal distance from the centerline to the edge of the central area.
- .373**: Total horizontal width of the central area.

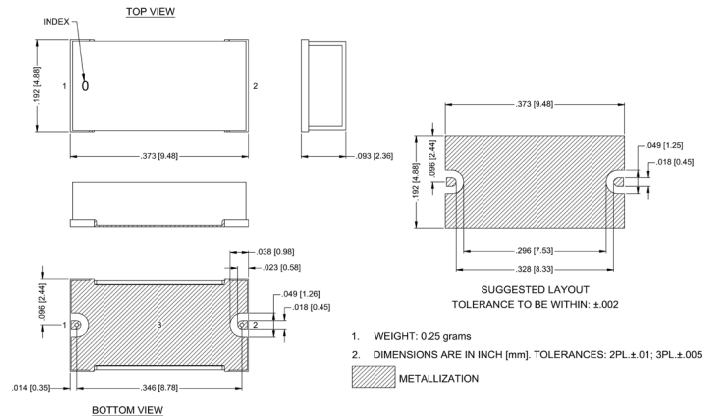
1. COPLANAR WAVEGUIDE PARAMETERS ARE SHOWN FOR ROGERS (R04350B) WITH DIELECTRIC THICKNESS .0068±.0007; COPPER: 1/2 Oz. EACH SIDE. FOR OTHER MATERIALS TRACE WIDTH AND GAP MAY NEED TO BE MODIFIED.

2. BOTTOM SIDE OF THE PCB IS CONTINUOUS GROUND PLANE.

■ DENOTES PCB COPPER PATTERN WITH SMOBC (SOLDER MASK OVER BARE COPPER)

■ DENOTES PCB COPPER PATTERN FREE OF SOLDERMASK

CASE STYLE DRAWING



PRODUCT MARKING*: ABF-22R8G

*Marking may contain other features or characters for internal lot control.



Mini-Circuits

THIN FILM SURFACE MOUNT

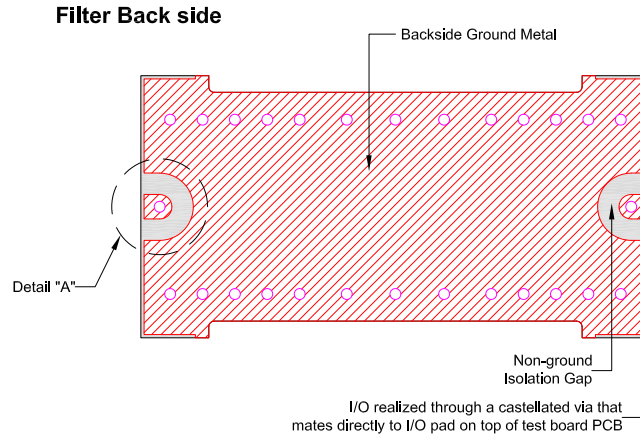
Bandpass Filter

ABF-22R8G+

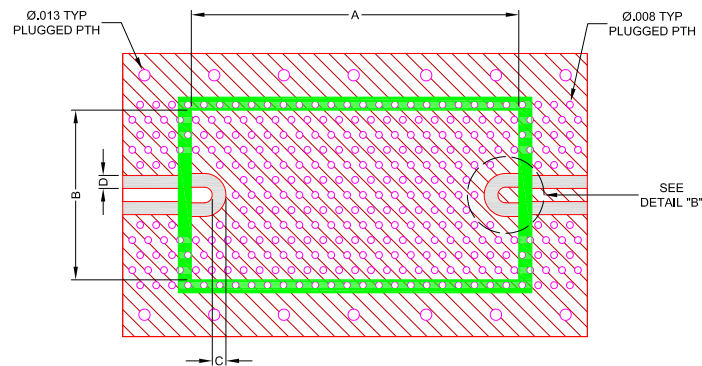
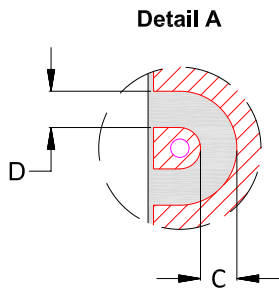
50Ω

22.3 to 23.3 GHz

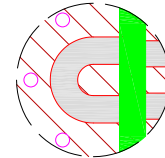
RECOMMENDED PCB LAYOUT PATTERN FOR FILTER



PCB Pattern Recommendations

Filter RF I/O Detail
(Filter Back side)

DETAIL "B"



- 1) Customer PCB's ground pattern length (dimension A) can be similar to filter length.
- 2) Customer PCB's ground pattern width (dimension B) can be similar to filter width.
- 3) Dimensions C and D on Filter RF I/O detail and Customer PCB pattern can be closely match. The dimensions of C and D on the Customer PCB pattern can be slightly larger to account for component alignment tolerance (ground metal can be pulled back from RF I/O trace).
- 4) Recommend to use Solder mask at Customer PCB at outer area of filter pattern/ footprint with a clearance of about 1.25mil at each side. (Tighter registration tolerance required for solder mask)
- 5) Recommended to use Solder mask at I/O of Customer PCB as per above diagram (refer detail B).

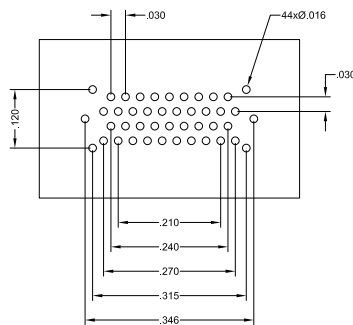




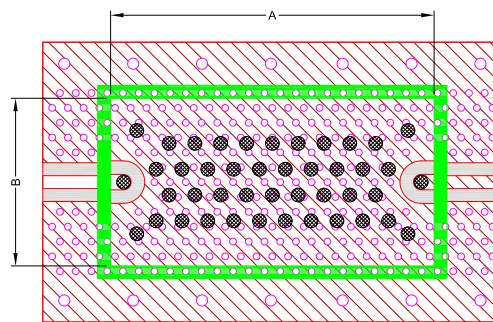
COMMENTS ON COMPONENT HANDLING AND SOLDER ATTACH

- 1) Avoid using soldering iron directly to the ceramic filter. This would lead to development of crack in the component due to thermal shock.
- 2) Vacuum pick-up tool or plastic tweezers are recommended for handling the components. Extra care should be taken not to scratch the filter or metal area.
- 3) Use 2-3 mil thickness stencil plate and screen print the solder. Refer below picture for recommended stencil pattern to get the best solder attachment.

Stencil opening drawing



Solder location after screen print



- 4) Plugged ground vias in the PWB will improve attachment consistency.
- 5) Recommended to have a similar or closer test board material and thickness (refer Mini-Circuits evaluation board for details) to minimize the CTE over the temperature range.



Mini-Circuits

THIN FILM SURFACE MOUNT

Bandpass Filter

ABF-22R8G+

50Ω

22.3 to 23.3 GHz

ADDITIONAL DETAILED INFORMATION IS AVAILABLE ON OUR DASHBOARD.

[CLICK HERE](#)

Performance Data and Graphs	Data
	Graphs
	S-Parameter (S2P Files) Data Set (.zip file) De-embedded to device pads
Case Style	BAS3622 Lead Finish: Gold over Nickel Plate
RoHS Status	Compliant
Tape and Reel	TR-F004
Suggested Layout for PCB Design	PL-778
Evaluation Board	TB-ABF-22R8G+
	Gerber File
Environmental Rating	ENV120T1

NOTES

- A. Performance and quality attributes and conditions not expressly stated in this specification document are intended to be excluded and do not form a part of this specification document.
- B. Electrical specifications and performance data contained in this specification document are based on Mini-Circuits' applicable established test performance criteria and measurement instructions.
- C. The parts covered by this specification document are subject to Mini-Circuits' standard limited warranty and terms and conditions (collectively, "Standard Terms"); Purchasers of this part are entitled to the rights and benefits contained therein. For a full statement of the standard terms and the exclusive rights and remedies thereunder, please visit Mini-Circuits' website at www.minicircuits.com/terms/viewterm.html

