

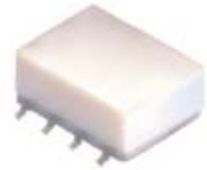
Power Splitter/Combiner

ADQ-ED13072

2 Way-90°

Important Note

This model has been designed, built and tested in our engineering department. Performance data represents model capability. At present it is a non-catalog model. On request, we can supply a final specification sheet, part number and price/delivery information.



Please click "Back", and then click "Contact Us" for Applications support.

CASE STYLE : CJ725

ELECTRICAL SPECIFICATIONS 50Ω @ +25°C				
Parameter		Min.	Typ.	Max. Units
Frequency		225		475 MHz
Isolation	225-475 MHz		21	dB
Insertion Loss				
Average of Coupled Outputs	225-475 MHz		0.5	dB
above 3.0 dB				
Phase Unbalance	225-475 MHz		2.2	deg.
Amplitude Unbalance	225-475 MHz		0.6	dB
VSWR	SUM Port		1.10	(:1)
	OUT Ports		1.16	(:1)

MAXIMUM RATINGS	
Operating Temperature	-40°C to 85°C
Storage Temperature	-55°C to 100°C

PIN CONNECTIONS	
SUM PORT	1
PORT 1 (0°)	5
PORT 2 (90°)	8
50Ω TERMINATION	4
GND	2,3,6,7

electrical schematic

