

Dual Low Pass Filter

B14-EDU2267/1

Surface Mount

Important Note

This model has been designed, built and tested in our engineering department. Performance data represents model capability. At present it is a non-catalog model. On request, we can supply a final specification sheet, part number and price/delivery information.



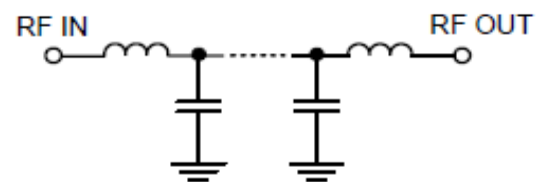
Please click "Back", and then click "Contact Us" for Applications support.

JV1210C-1

ELECTRICAL SPECIFICATIONS 50Ω @ +25°C							
Parameter		Port	Frequency (MHz)	Min.	Typ.	Max.	Units
Passband	Insertion Loss	LPF-1	1-1100	-	1.5	-	dB
		LPF-2	1-1100	-	1.5	-	dB
	Return Loss	LPF-1	1-1100	-	13	-	dB
		LPF-2	1-1100	-	13	-	dB
Stop band isolation		LPF-1	1800-5100	-	32	-	dB
		LPF-2	1800-5100	-	32	-	dB

Functional Schematic

MAXIMUM RATINGS	
Operating Temperature	-55°C to 100°C
Storage Temperature	-55°C to 100°C
RF Power Input	8.5W



PIN CONNECTIONS	
RF IN1, RF IN2	1,6
RF OUT1, RF OUT2	3,4
Ground	2,5