



LTCC SURFACE MOUNT

Bandpass Filter

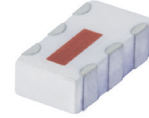
BFCN-1560+

50Ω

1500 to 1620 MHz

THE BIG DEAL

- Good Rejection, 30 dB Typ.
- 1206 Surface Mount Footprint
- Power Handling: 1.5 Watts

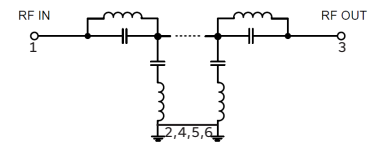


Generic photo used for illustration purposes only

APPLICATIONS

- Harmonic Rejection
- Transmitters / Receivers

FUNCTIONAL DIAGRAM



PRODUCT OVERVIEW

Mini-Circuits' BFCN-1560+ LTCC Band Pass Filter is constructed with multiple layers in order to achieve a miniature size and high repeatability of performance. Wrap-around terminations minimize variations in performance due to parasitics. Covering 120 MHz passband, these units offer low insertion loss and good rejection.

KEY FEATURES

Features	Advantages
Small Size, 1206	Allows for high layout density of circuit boards, while minimizing the effects of parasitics.
Wrap around termination	Provides excellent solderability and easy visual inspection capability.
LTCC construction	Provides a rugged package that is well suited for tough environments including high humidity and high temperature extremes.
Rugged Power handling	Handles up to 1.5 Watts in a small package.



ELECTRICAL SPECIFICATIONS^{1,2} AT +25°C

Parameter	F#	Frequency (MHz)	Min.	Typ.	Max.	Units
Passband	Center Frequency ³	—	—	1560	—	MHz
	Insertion Loss	F1-F2	1500 - 1620	—	5	dB
	Return Loss	F1-F2	1500 - 1620	11.73	—	dB
Stop Band, Lower	Rejection	DC-F3	DC - 1040	—	30	dB
		F4	1100	20	—	dB
Stop Band, Upper	Rejection	F5	2100	20	—	dB
		F6-F7	2105 - 4200	—	30	dB

1. Tested in Evaluation Board P/N TB-BFCN-1560+.

2. This component should not be used as a DC-block. In applications where DC voltage and/or current is present at either the input or output ports, external DC blocking capacitors are required.

3. Typical variation ± 5%

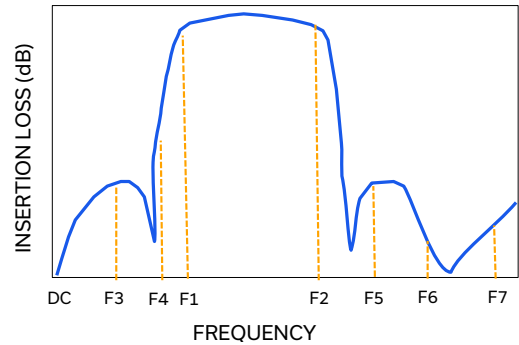
ABSOLUTE MAXIMUM RATINGS⁴

Parameter	Ratings
Operating Temperature	-55°C to 100°C
Storage Temperature	-55°C to 100°C
Input Power ⁵	1.5W @25°C

4. Permanent damage may occur if any of these limits are exceeded.

5. Power rating applies only to signals within the passband. Power rating above +25°C operating temperature decreases linearly to 0.25W at +100°C.

TYPICAL FREQUENCY RESPONSE





LTCC SURFACE MOUNT

Bandpass Filter

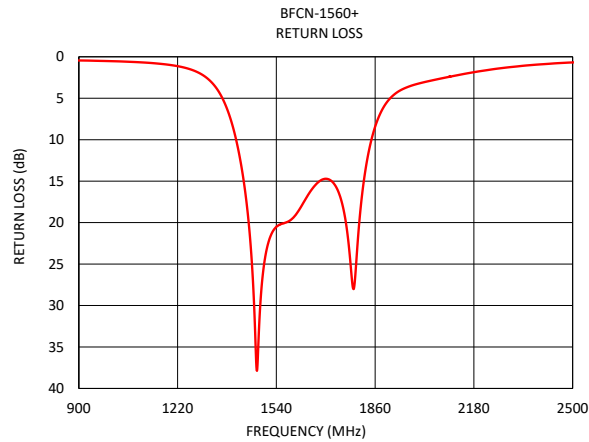
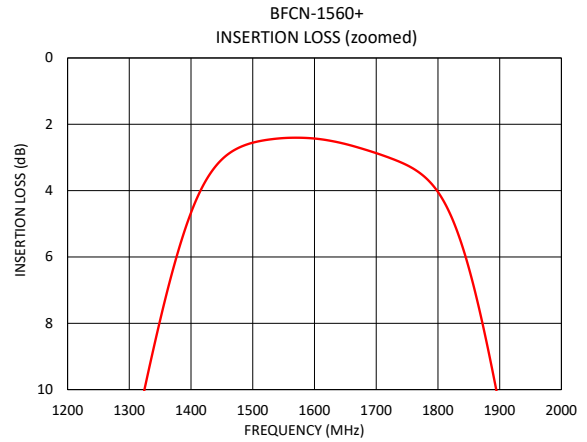
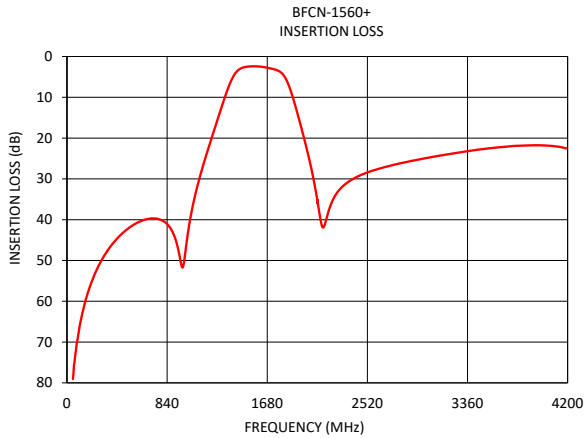
BFCN-1560+

Mini-Circuits

50Ω

1500 to 1620 MHz

TYPICAL PERFORMANCE GRAPHS AT +25°C





FUNCTIONAL DIAGRAM

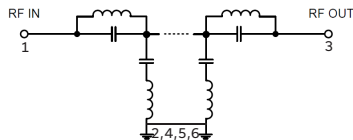


Figure 1. BFCN-1560+ Functional Diagram

PAD DESCRIPTION

Function	Pad Number	Description
RF1 ²	1	Connects to RF Input Port
RF2 ²	3	Connects to RF Output Port
GROUND	2,4,5,6	Connects to Ground on PCB, (See drawing PL-158)

SUGGESTED PCB LAYOUT (PL-158)

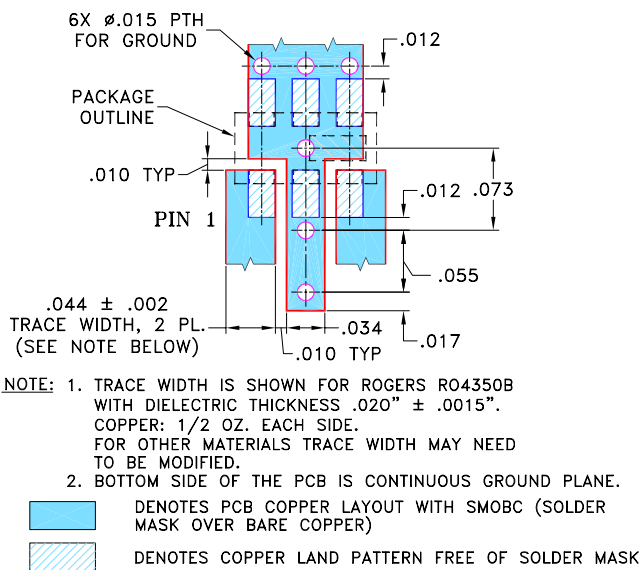
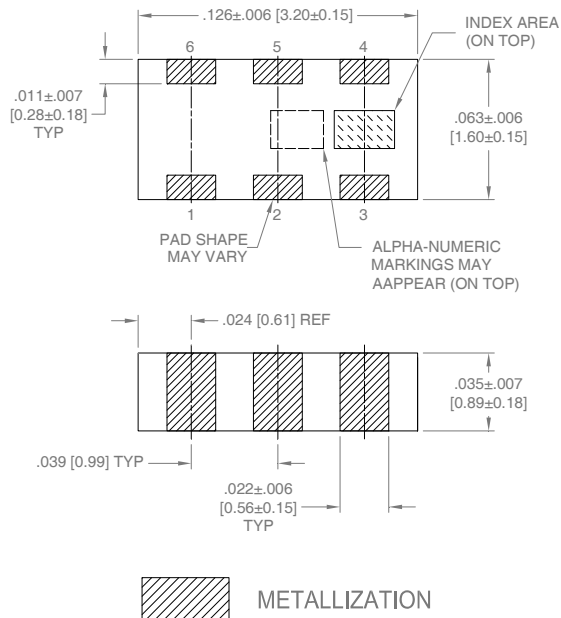


Figure 2. Suggested PCB Layout PL-158

CASE STYLE DRAWING



Weight : .020 grams.

Dimensions are in inches (mm). Tolerances: 2Pl. ± .01; 3 Pl. ± .005

PRODUCT MARKING*: N/A

*Marking may contain other features or characters for internal lot control.



LTCC SURFACE MOUNT

Bandpass Filter

BFCN-1560+

50Ω

1500 to 1620 MHz

ADDITIONAL DETAILED INFORMATION IS AVAILABLE ON OUR DASH BOARD.

[CLICK HERE](#)

Performance Data & Graphs	Data Graphs S-Parameter (S2P Files) Data Set (.zip file) De-embedded to device pads
Case Style	FV1206-1 Lead Finish: Nickel Tin
RoHS Status	Compliant
Tape and Reel	TR-F75
Suggested Layout for PCB Design	PL-158
Evaluation Board	TB-BFCN-1560+ Gerber File
Environmental Rating	ENV06

NOTES

- A. Performance and quality attributes and conditions not expressly stated in this specification document are intended to be excluded and do not form a part of this specification document.
- B. Electrical specifications and performance data contained in this specification document are based on Mini-Circuits' applicable established test performance criteria and measurement instructions.
- C. The parts covered by this specification document are subject to Mini-Circuits' standard limited warranty and terms and conditions (collectively, "Standard Terms"); Purchasers of this part are entitled to the rights and benefits contained therein. For a full statement of the standard terms and the exclusive rights and remedies thereunder, please visit Mini-Circuits' website at www.minicircuits.com/terms/viewterm.html

