

Engineering Development Model

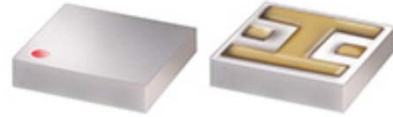
Band Pass Filter

Surface Mount Ceramic

BFTC-530EDU+

Important Note

This model has been designed, built and tested in our engineering department. Performance data represents model capability. At present it is a non-catalog model. On request, we can supply a final specification sheet, part number and price/delivery information.



Please click "Back", and then click "Contact Us" for Applications support.

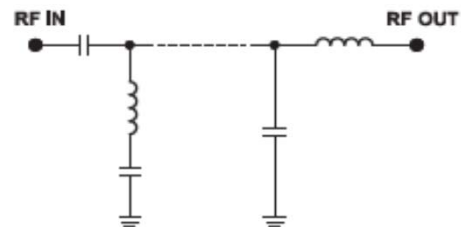
FR933-1

ELECTRICAL SPECIFICATIONS 50Ω @ +25°C						
Parameter		Frequency (MHz)	Min.	Typ.	Max.	Units
Passband	Centre frequency	-	-	530	-	MHz
	Insertion Loss	430 - 630	-	3.0	4.0	dB
	VSWR	430 - 630	1.9	1.78	-	:1
Stop Band, Lower	Insertion Loss	1 - 300	30	42	-	dB
Stop Band, Upper	Insertion Loss	900 - 1800	30	37	-	dB

MAXIMUM RATINGS	
Operating Temperature	-40°C to 85°C
Storage Temperature	-55°C to 100°C
RF Power Input	4W max @ +25°C

PIN CONNECTIONS	
Input	2
Output	5
Ground	1,3,4,6

Functional Schematic



+RoHS Compliant

The +Suffix identifies RoHS Compliance. See our web site for RoHS Compliance methodologies and qualifications



P.O. Box 350166, Brooklyn, New York 11235-0003 (718) 934-4500 Fax (718) 332-4661 For detailed performance specs & shopping online see Mini-Circuits web site



The Design Engineers Search Engine Provides ACTUAL Data Instantly From MINI-CIRCUITS At: www.minicircuits.com

RF/IF MICROWAVE COMPONENTS



REV. OR
BFTC-530EDU+
URJ

180812

Page 1 of 1