

Coaxial High Pass Filter

BHP-250+

50Ω 225 to 3000 MHz

Maximum Ratings

Operating Temperature	-55°C to 100°C
Storage Temperature	-55°C to 100°C
RF Power Input	0.5W max.

Permanent damage may occur if any of these limits are exceeded.

Features

- rugged shielded case
- other standard and custom BHP models available with wide selection of fco

Applications

- lab use
- transmitters/receivers
- radio communications



Generic photo used for illustration purposes only

CASE STYLE: FF55

Connectors	Model
BNC	BHP-250+

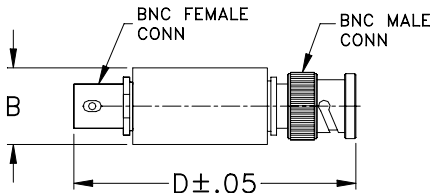
+RoHS Compliant

The +Suffix identifies RoHS Compliance. See our web site for RoHS Compliance methodologies and qualifications

High Pass Filter Electrical Specifications

STOPBAND (MHz)		fco (MHz) Nom.	PASSBAND (MHz)	VSWR (:1)	
(loss > 40 dB)	(loss > 20 dB)	(loss 3 dB)	(loss < 1 dB)	Stopband Typ.	Passband Typ.
DC-100	100-150	205	225-3000	17	1.3

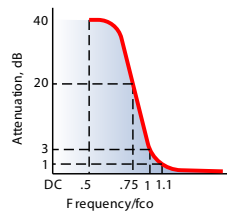
Outline Drawing



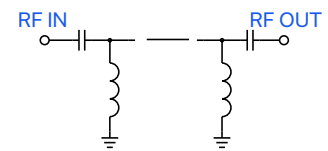
Outline Dimensions (inch/mm)

B	D	wt
.57	2.59	grams
14.47	65.79	40.0

typical frequency response

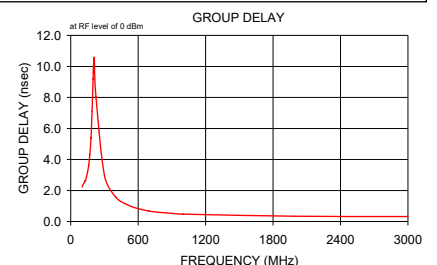
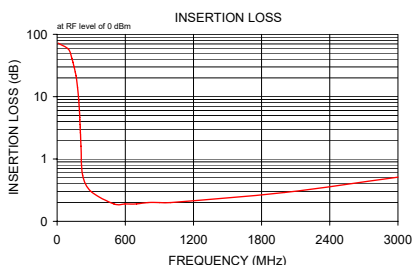


electrical schematic



Typical Performance Data

Frequency (MHz)	Insertion Loss (dB)	Return Loss (dB)	Frequency (MHz)	Group Delay (nsec)
	\bar{x}	σ		
10.00	72.15	5.67	100.00	2.23
100.00	57.26	0.27	129.00	2.63
129.00	41.25	0.45	130.00	2.59
130.00	40.71	0.46	140.00	2.90
140.00	35.39	0.54	150.00	3.17
150.00	30.09	0.62	160.00	3.63
160.00	24.78	0.73	166.00	4.00
166.00	21.57	0.80	170.00	4.32
170.00	19.43	0.85	180.00	5.39
180.00	14.04	0.97	190.00	7.09
190.00	8.77	1.03	199.00	9.19
199.00	4.65	0.89	200.00	9.41
200.00	4.26	0.86	201.00	9.63
201.00	3.90	0.83	202.00	9.83
202.00	3.56	0.79	203.00	10.02
203.00	3.24	0.75	204.00	10.18
204.00	2.94	0.70	205.00	10.32
205.00	2.66	0.66	206.00	10.43
206.00	2.41	0.61	210.00	10.58
210.00	1.60	0.42	225.00	8.03
225.00	0.55	0.03	300.00	2.94
300.00	0.30	0.02	400.00	1.59
500.00	0.19	0.00	500.00	1.09
600.00	0.19	0.00	600.00	0.83
700.00	0.19	0.01	700.00	0.67
800.00	0.20	0.01	800.00	0.58
900.00	0.20	0.01	900.00	0.52
1000.00	0.20	0.00	1000.00	0.47
2000.00	0.29	0.00	2000.00	0.34
3000.00	0.51	0.02	3000.00	0.32



Notes

- Performance and quality attributes and conditions not expressly stated in this specification document are intended to be excluded and do not form a part of this specification document.
- Electrical specifications and performance data contained in this specification document are based on Mini-Circuit's applicable established test performance criteria and measurement instructions.
- The parts covered by this specification document are subject to Mini-Circuit's standard limited warranty and terms and conditions (collectively, "Standard Terms"); Purchasers of this part are entitled to the rights and benefits contained therein. For a full statement of the Standard Terms and the exclusive rights and remedies thereunder, please visit Mini-Circuit's website at www.minicircuits.com/MCLStore/terms.jsp



www.minicircuits.com P.O. Box 350166, Brooklyn, NY 11235-0003 (718) 934-4500 sales@minicircuits.com

REV. E
ECO-023903
BHP-250+
MCL NY
241210