

Band Pass Filter**BPF-EDU1063**

Surface Mount

Important Note

This model has been designed, built and tested in our engineering department. Performance data represents model capability.
At present it is a non-catalog model. On request, we can supply a final specification sheet, part number and price/delivery information.

**CASE STYLE :HP1156**

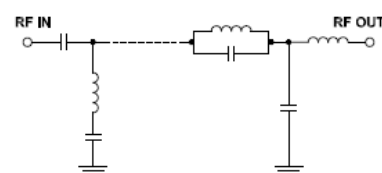
Please click "Back", and then click "Contact Us" for Applications support.

ELECTRICAL SPECIFICATIONS 50Ω @ +25°C

Parameter	Min.	Typ.	Max.	Units
Passband (Loss < 3 dB)	560		690	MHz
Centre frequency		625		MHz
Low Band (Loss > 40 dB)	220		320	MHz
Low Band (Loss > 20 dB)	320		526	MHz
High Band (Loss > 20 dB)	752		920	MHz
High Band (Loss > 40 dB)	920		1000	MHz
Passband VSWR		1.45	1.9	(:1)
Stopband VSWR		20		(:1)

Functional Schematic

MAXIMUM RATINGS	
Operating Temperature	-40°C to 85°C
Storage Temperature	-55°C to 100°C
RF Power Input	0.5 W

**PIN CONNECTIONS**

Input	2
Output	11
Not Connected	9,18
Case Ground	1,3,4,5,6,7,8,10,12,13,14,15,16,17