

Band Pass Filter

BPF-EDU1210

Surface Mount

Important Note

This model has been designed, built and tested in our engineering department. Performance data represents model capability. At present it is a non-catalog model. On request, we can supply a final specification sheet, part number and price/delivery information.

Please click "Back", and then click "Contact Us" for Applications support.



CASE STYLE : HP1156

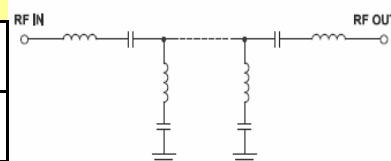
ELECTRICAL SPECIFICATIONS 50Ω @ +25°C

Parameter	Min.	Typ.	Max.	Units
Passband (Loss < 3.5 dB)	125		155	MHz
Centre frequency		140		MHz
Low Band (Loss > 40 dB)	DC		110	MHz
Low Band (Loss > 20 dB)	110		115	MHz
High Band (Loss > 20 dB)	167		174	MHz
High Band (Loss > 40 dB)	174		400	MHz
Passband VSWR		1.4	1.9	(:1)
Stopband VSWR		20		(:1)

Functional Schematic

MAXIMUM RATINGS

Operating Temperature	-40°C to 85°C
Storage Temperature	-55°C to 100°C
RF Power Input	1W



PIN CONNECTIONS

Input	2
Output	11
Not Connected	9,18
Case Ground	1, 3, 4, 5, 6, 7, 8, 10,12, 13, 14, 15, 16,17

Mini-Circuits
ISO 9001 ISO 14001 CERTIFIED

ALL NEW
minicircuits.com

P.O. Box 350166, Brooklyn, New York 11235-0003 (718) 934-4500 Fax (718) 332-4661 For detailed performance specs & shopping online see Mini-Circuits web site



The Design Engineers Search Engine Provides ACTUAL Data Instantly From MINI-CIRCUITS At: www.minicircuits.com

RF/IF MICROWAVE COMPONENTS

REV. X1
BPF-EDU1210
URJ
090409
Page 1 of 1