

Surface Mount High Pass Filter

EHPF-950-1+

50Ω 950 to 3000 MHz

Features

- Miniature shielded package
- Low insertion loss
- High rejection

CASE STYLE: HE1354

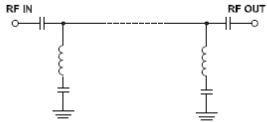
Applications

- Defense/Military
- Military Radio Communication

Electrical Specifications

Parameter		F#	Frequency (MHz)	Min.	Typ.	Max.	Unit
Stop Band	Rejection Loss	DC-F1	DC - 700	30	40	-	dB
	Pass Band	Insertion Loss	F2-F3	950 - 1200	-	0.9	2
F3-F4			1200 - 2000	-	0.5	1	dB
Return Loss		F4-F5	2000 - 3000	-	0.5	1	dB
		F2-F4	950 - 2000	12	-	-	dB
		F4-F5	2000 - 3000	-	12	-	dB

Functional Schematic



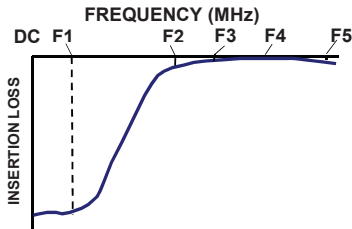
Maximum Ratings

Operating Temperature	-40°C to 85°C
Storage Temperature	-55°C to 100°C
RF Power Input	1 W

Permanent damage may occur if any of these limits are exceeded.

Typical Performance Data at 25°C

Typical Frequency Response



+RoHS Compliant

The +Suffix identifies RoHS Compliance. See our web site for RoHS Compliance methodologies and qualifications

Notes

- Performance and quality attributes and conditions not expressly stated in this specification document are intended to be excluded and do not form a part of this specification document.
- Electrical specifications and performance data contained in this specification document are based on Mini-Circuit's applicable established test performance criteria and measurement instructions.
- The parts covered by this specification document are subject to Mini-Circuits standard limited warranty and terms and conditions (collectively, "Standard Terms"); Purchasers of this part are entitled to the rights and benefits contained therein. For a full statement of the Standard Terms and the exclusive rights and remedies thereunder, please visit Mini-Circuits' website at www.minicircuits.com/MCLStore/terms.jsp

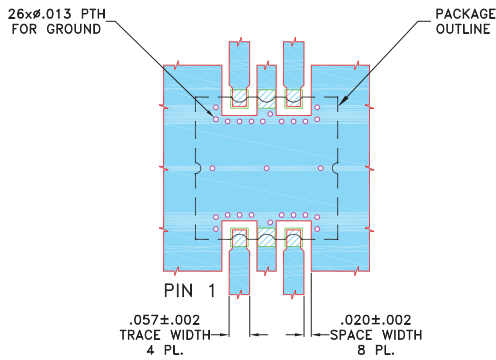


Pad Connections

INPUT	1
OUTPUT	6
GROUND	2,5
NOT USED	3,4

Demo Board MCL P/N: TB-XXXX+
Suggested PCB Layout (PL-680)

SUGGESTED MOUNTING CONFIGURATION FOR
 HE1354 CASE STYLE

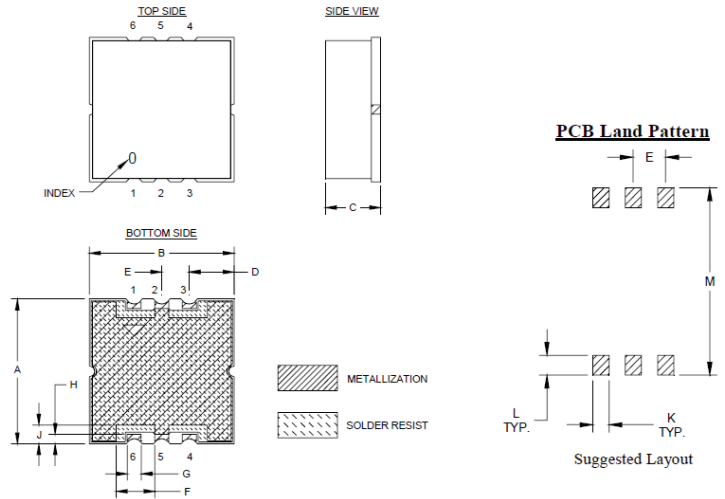


NOTES:

- TRACE WIDTH IS SHOWN FOR ROGERS (R04350B) WITH DIELECTRIC THICKNESS .030"±.002". COPPER: 1/2 OZ. EACH SIDE. FOR OTHER MATERIALS TRACE WIDTH MAY NEED TO BE MODIFIED.
- BOTTOM SIDE OF THE PCB IS CONTINUOUS GROUND PLANE.

- DENOTES PCB COPPER LAYOUT WITH SMOBC (SOLDER MASK OVER BARE COPPER)
- DENOTES COPPER LAND PATTERN FREE OF SOLDERMASK

Outline Drawing



Outline Dimensions (inch / mm)

A	B	C	D	E	F	G	H	J	K	L	M	Wt.
.394	.394	.150	.122	.075	.098	.038	.026	.051	.038			grams
10.01	10.01	3.81	3.10	1.90	2.49	0.97	0.66	1.29	0.97			
										L	M	Wt.
										.046	.434	grams
										1.17	11.02	0.7

Note: Please refer to case style drawing for details.

Notes

- A. Performance and quality attributes and conditions not expressly stated in this specification document are intended to be excluded and do not form a part of this specification document.
- B. Electrical specifications and performance data contained in this specification document are based on Mini-Circuit's applicable established test performance criteria and measurement instructions.
- C. The parts covered by this specification document are subject to Mini-Circuits standard limited warranty and terms and conditions (collectively, "Standard Terms"); Purchasers of this part are entitled to the rights and benefits contained therein. For a full statement of the Standard Terms and the exclusive rights and remedies thereunder, please visit Mini-Circuits' website at www.minicircuits.com/MCLStore/terms.jsp