

Surface Mount Voltage Variable Attenuator

EVA-3000+

50Ω 50 to 3000 MHz

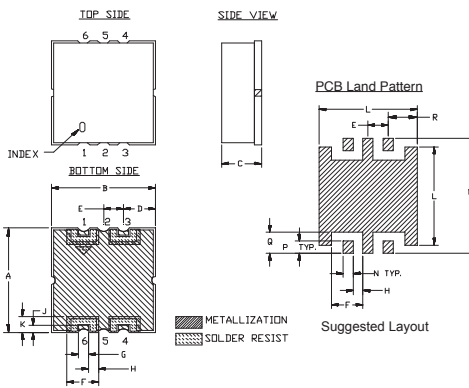
Maximum Ratings

Operating Temperature	-45°C to 85°C
Storage Temperature	-55°C to 100°C
Absolute Max. Supply Voltage(V+)	7V
Absolute Max. Control Voltage(Vctrl)	9V
Absolute Max. RF Input Level	+22 dBm
Permanent damage may occur if any of these limits are exceeded.	

Pin Connections

RF IN	1
RF OUT	6
V CONTROL	3
V+	4
GROUND	2,5

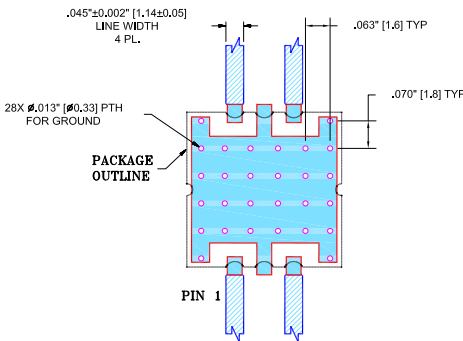
Outline Drawing



Outline Dimensions (inch/mm)

A	B	C	D	E	F	G	H	
.394	.394	.150	.122	.075	.120	.038	.037	
10.01	10.01	3.81	3.10	1.90	3.05	0.97	0.94	
J	K	L	M	N	P	Q	R	wt.
.026	.061	.370	.434	.038	.046	.081	.110	grams
0.66	1.55	9.40	11.02	0.97	1.17	2.06	2.79	0.7

Demo Board MCL P/N: TB-335 Suggested PCB Layout (PL-187)



NOTE:

- TRACE WIDTH IS SHOWN FOR FR4 WITH DIELECTRIC THICKNESS. .025"±.002". COPPER: 1/2 OZ. EACH SIDE. FOR OTHER MATERIALS TRACE WIDTH MAY NEED TO BE MODIFIED.
- BOTTOM SIDE OF THE PCB IS CONTINUOUS GROUND PLANE.

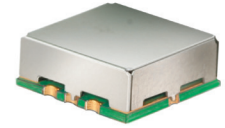
- DENOTES PCB COPPER LAYOUT
- DENOTES COPPER LAND PATTERN FREE OF SOLDERMASK

Features

- Frequency range, 50-3000 MHz
- IP3, 45 dBm typ.
- Maximum attenuation at minimum current
- No external bias and RF matching network required
- Small size, shielded case
- Low cost
- Aqueous washable

Applications

- Variable gain amplifier
- Feed forward amplifiers
- ALC circuits



CASE STYLE: HE1135

+RoHS Compliant

The +Suffix identifies RoHS Compliance. See our web site for RoHS Compliance methodologies and qualifications

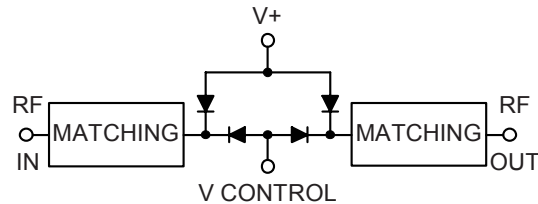
Electrical Specifications (T_{AMB} = 25°C)

FREQ. (MHz)	MIN. INSERTION LOSS, dB (+8V)		MAX. ATTENUATION dB (0V)		INPUT POWER (dBm)	CONTROL Voltage Current (V) (mA)		IP3 (dBm)	RETURN LOSS (dB)	POWER SUPPLY Voltage Current (V) (mA)	
	Min.	Max.	Typ.	Max.		Max.	Max.			Typ.	Typ.
50 - 1000	2.5	4.0	43	27	+22	0 - 8	40	41	21	+5	5
1000 - 2000	3.0	4.5	29	21	+22	0 - 8	40	45	22	+5	5
2000 - 3000	3.5	5.5	24	17	+22	0 - 8	40	44	18	+5	5

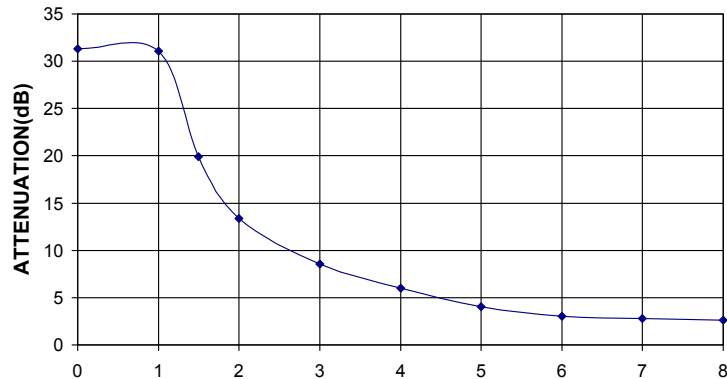
Notes:

Rise/Fall time: 15μSec/36μSec Typ.
Switching Time, turn on/off: 40μSec. Typ.

Equivalent Schematic



EVA-3000+ TYPICAL ATTENUATION AT 1500MHz



Notes

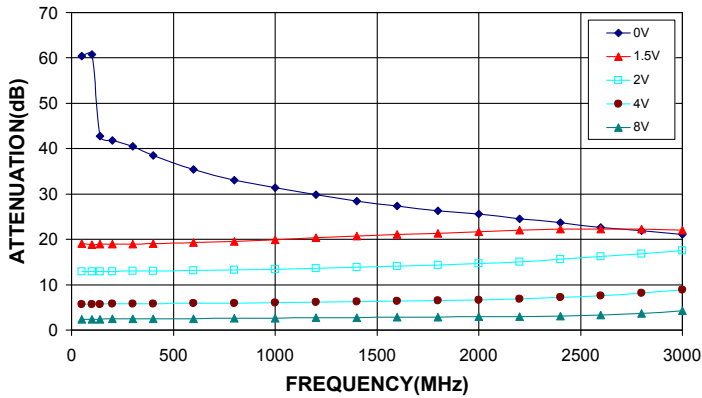
- Performance and quality attributes and conditions not expressly stated in this specification document are intended to be excluded and do not form a part of this specification document.
- Electrical specifications and performance data contained in this specification document are based on Mini-Circuit's applicable established test performance criteria and measurement instructions.
- The parts covered by this specification document are subject to Mini-Circuits standard limited warranty and terms and conditions (collectively, "Standard Terms"); Purchasers of this part are entitled to the rights and benefits contained therein. For a full statement of the Standard Terms and the exclusive rights and remedies thereunder, please visit Mini-Circuits' website at www.minicircuits.com/MCLStore/terms.jsp



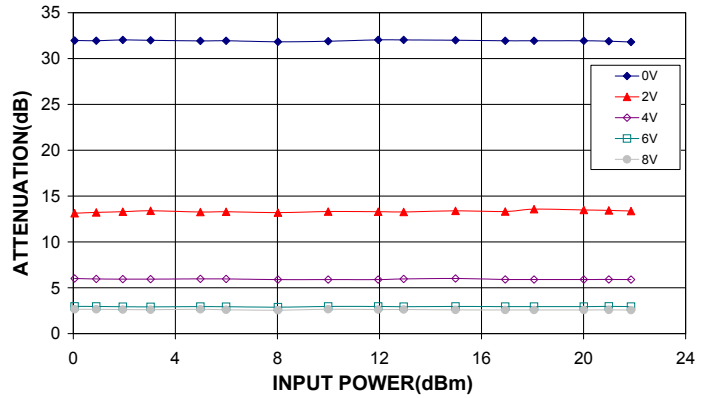
www.minicircuits.com P.O. Box 350166, Brooklyn, NY 11235-0003 (718) 934-4500 sales@minicircuits.com

REV. D
M151108
EVA-3000+
EDR-7165/2
RAV
161211
Page 1 of 2

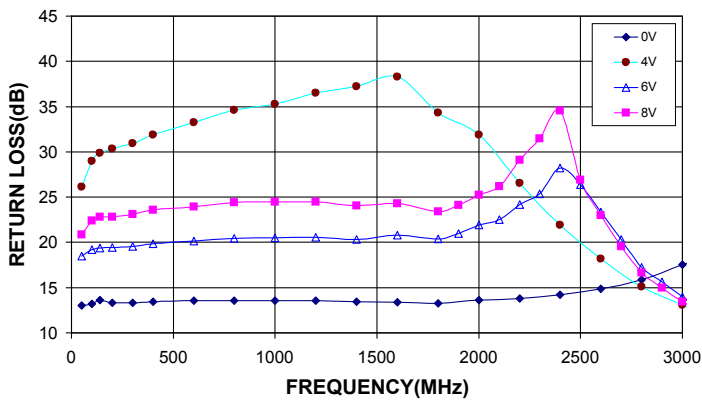
**EVA-3000+
ATTENUATION Vs. FREQUENCY
OVER CONTROL VOLTAGES**



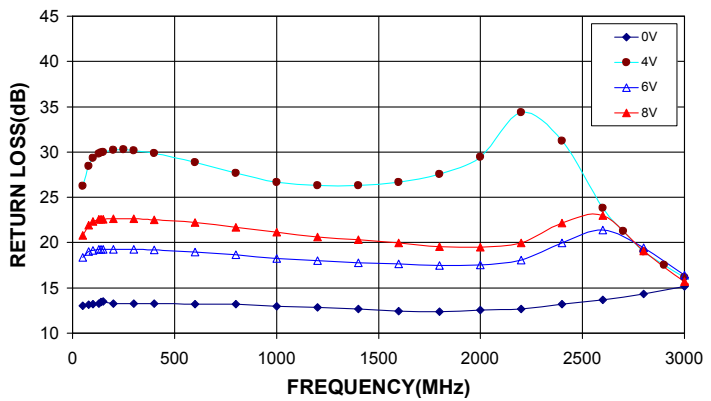
**EVA-3000+
ATTENUATION Vs. INPUT POWER
OVER CONTROL VOLTAGES AT 900MHZ**



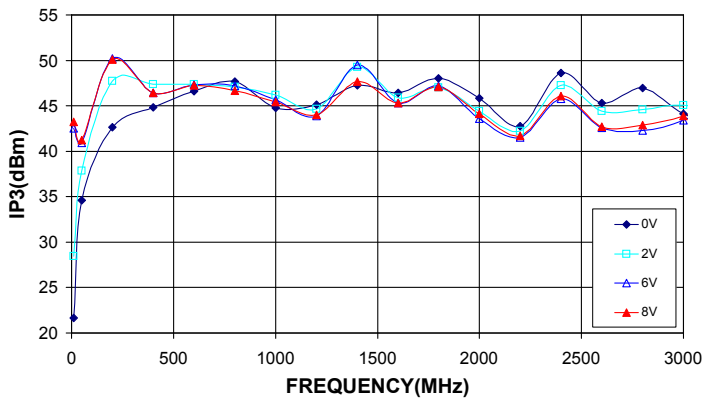
**EVA-3000+
INPUT RETURN LOSS Vs. FREQUENCY
OVER CONTROL VOLTAGES**



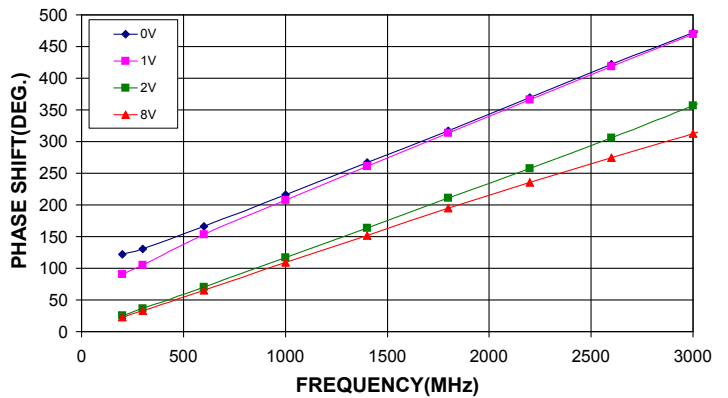
**EVA-3000+
OUTPUT RETURN LOSS Vs. FREQUENCY
OVER CONTROL VOLTAGES**



**EVA-3000+
IP3 Vs. FREQUENCY
OVER CONTROL VOLTAGES**



**EVA-3000+
PHASE SHIFT Vs. FREQUENCY
OVER CONTROL VOLTAGES**



Notes

- A. Performance and quality attributes and conditions not expressly stated in this specification document are intended to be excluded and do not form a part of this specification document.
- B. Electrical specifications and performance data contained in this specification document are based on Mini-Circuit's applicable established test performance criteria and measurement instructions.
- C. The parts covered by this specification document are subject to Mini-Circuits standard limited warranty and terms and conditions (collectively, "Standard Terms"); Purchasers of this part are entitled to the rights and benefits contained therein. For a full statement of the Standard Terms and the exclusive rights and remedies thereunder, please visit Mini-Circuits' website at www.minicircuits.com/MCLStore/terms.jsp

