

# Coaxial RF Transformer

50Ω 0.1 to 400 MHz

## FT-1.5-1+



Generic photo used for illustration purposes only

CASE STYLE: H16

BNC Connectors	Model
PRIMARY FEMALE / SECONDARY FEMALE	FF1.5-1*A16+
PRIMARY FEMALE / SECONDARY MALE	FF1.5-1*B16+
PRIMARY MALE / SECONDARY FEMALE	FF1.5-1*C16+ <sup>†</sup>
(BRACKET (OPTION "B"))	

<sup>†</sup>Non-Catalog Models, Contact Sales Dept.

**+RoHS Compliant**

The +Suffix identifies RoHS Compliance. See our web site for RoHS Compliance methodologies and qualifications

### Maximum Ratings

Operating Temperature	-55°C to 100°C
Storage Temperature	-55°C to 100°C
RF Power	250mW
DC Current	30mA

Permanent damage may occur if any of these limits are exceeded.

### Coaxial Connections

	Marking
PRIMARY	50
SECONDARY	75

### Features

- wideband, 0.1 to 400 MHz
- good return loss

### Applications

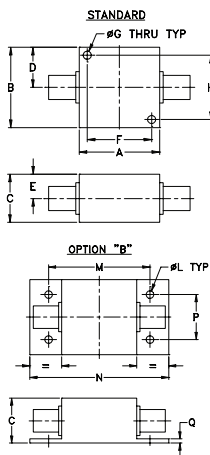
- impedance matching

### Transformer Electrical Specifications

Ω RATIO (Secondary/Primary)	FREQUENCY (MHz)	INSERTION LOSS*		
		3 dB MHz	2 dB MHz	1 dB MHz
1.5	0.1-400	0.1-400	0.5-200	1-100

\* Insertion Loss is referenced to mid-band loss, 0.3 dB typ.

### Outline Drawing



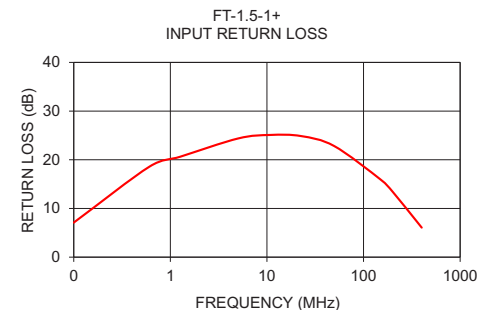
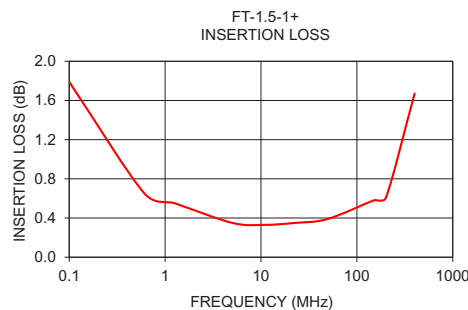
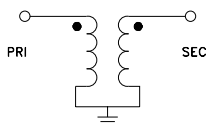
### Outline Dimensions (inch/mm)

A	B	C	D	E	F	G	H
1.25	1.25	.75	.63	.38	1.000	.125	1.000
31.75	31.75	19.05	16.00	9.65	25.40	3.18	25.40
J	K	L	M	N	P	Q	wt
--	--	.125	1.688	2.18	.750	.06	grams
--	--	3.18	42.88	55.37	19.05	1.52	70.0

### Typical Performance Data

FREQUENCY (MHz)	INSERTION LOSS (dB)	INPUT R. LOSS (dB)
0.10	1.79	7.10
0.61	0.65	18.61
1.27	0.55	20.63
5.03	0.35	24.38
10.86	0.33	25.10
22.53	0.35	24.87
49.60	0.39	22.83
149.65	0.58	15.96
201.16	0.61	13.38
400.00	1.67	6.07

### Config. D



### Notes

- Performance and quality attributes and conditions not expressly stated in this specification document are intended to be excluded and do not form a part of this specification document.
- Electrical specifications and performance data contained in this specification document are based on Mini-Circuits' applicable established test performance criteria and measurement instructions.
- The parts covered by this specification document are subject to Mini-Circuits' standard limited warranty and terms and conditions (collectively, "Standard Terms"); Purchasers of this part are entitled to the rights and benefits contained therein. For a full statement of the Standard Terms and the exclusive rights and remedies thereunder, please visit Mini-Circuits' website at [www.minicircuits.com/MCLStore/terms.jsp](http://www.minicircuits.com/MCLStore/terms.jsp)

