



Power Doubler Hybrid Amplifier **HKCA-4011A+**

75Ω 108 to 1794 MHz

THE BIG DEAL

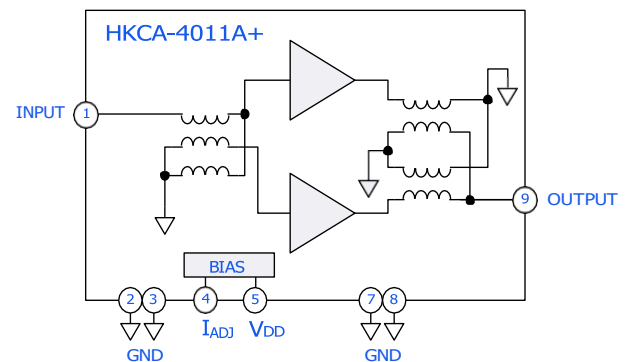
- High RF Output
- High Gain
- Very Low Distortion
- Transient and Surge Protection
- V_{DD} : +24 V
- Configurable DC Current
- Industry-Standard, 8-pin SOT115J Module Package with Bias Adjust

*Generic photo used for illustration purposes only*

APPLICATIONS

- 108 MHz to 1794 MHz Cable Television (CATV) Infrastructure Amplifier Systems
- Remote Physical Layer (PHY)
- FDX, Extended Spectrum, Unified Nodes
- DOCSIS® 3.1 and 4.0 Compliant

FUNCTIONAL DIAGRAM



PRODUCT OVERVIEW

The HKCA-4011A+ is a high gain, power doubler hybrid amplifier optimized over a wide range of bias conditions for power efficiency and customer flexibility. The HKCA-4011A+ is ideally suited for use in DOCSIS® 4.0 node applications. DC current can be adjusted externally for optimum distortion performance vs. power consumption over a range of output levels. The HKCA-4011A+ is packaged in the industry-standard SOT115J package.

KEY FEATURES

Features	Advantages
High RF Output	Extends reach to next active and minimizes need for booster stages in the network.
High Gain	Minimizes the input signal needed to drive the full output; reduces bias in driver stage.
Adjustable Bias	Allows for optimization of network efficiency for various use cases and deployments.

Contact Mini-Circuits Applications for full data sheet.



Power Doubler Hybrid Amplifier **HKCA-4011A+**

75Ω 108 to 1794 MHz

ADDITIONAL DETAILED TECHNICAL INFORMATION IS AVAILABLE ON OUR DASHBOARD.

Case Style	NP3629-3. Plastic package, Gold plated leads
RoHS Status	Compliant
Standard Ordering Quantities	Multiples of 25 (25 pcs per tray)
Environmental Ratings	ENV08T1
Ordering Part Number	HKCA-4011A+