

Engineering Development Model

Band Pass Filter

JCBP-EDU0995

Surface Mount

Important Note

This model has been designed, built and tested in our engineering department. Performance data represents model capability. At present it is a non-catalog model. On request, we can supply a final specification sheet, part number and price/delivery information.



Please click "Back", and then click "Contact Us" for Applications support.

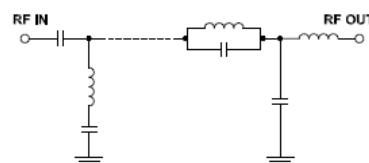
CASE STYLE : BG291

ELECTRICAL SPECIFICATIONS 50Ω @ +25°C

Parameter	Min.	Typ.	Max.	Units
Passband (Loss < 1.5 dB)	30		88	MHz
Centre frequency		51		MHz
Low Band (Loss > 40 dB)	DC		20	MHz
Low Band (Loss > 20 dB)	20		22	MHz
High Band (Loss > 20 dB)	115		125	MHz
High Band (Loss > 40 dB)	125		900	MHz
Passband VSWR		1.2		(:1)
Stopband VSWR		20		(:1)

Functional Schematic

MAXIMUM RATINGS	
Operating Temperature	-40°C to 85°C
Storage Temperature	-55°C to 100°C
RF Power Input	0.5 W



PIN CONNECTIONS

Input	2
Output	9
Not Connected	-
Case Ground	1,3,4,5,6,7,8,10,11,12,13,14



P.O. Box 350166, Brooklyn, New York 11235-0003 (718) 934-4500 Fax (718) 332-4661 For detailed performance specs & shopping online see Mini-Circuits web site



The Design Engineers Search Engine Provides ACTUAL Data Instantly From MINI-CIRCUITS At: www.minicircuits.com

RF/IF MICROWAVE COMPONENTS



REV. X1
JCBP-EDU0995
URJ
080417
Page 1 of 1