

Band Pass Filter

Surface Mount

JCBP-EDU0996

Important Note

This model has been designed, built and tested in our engineering department. Performance data represents model capability. At present it is a non-catalog model. On request, we can supply a final specification sheet, part number and price/delivery information.



Please click "Back", and then click "Contact Us" for Applications support.

CASE STYLE : BG419

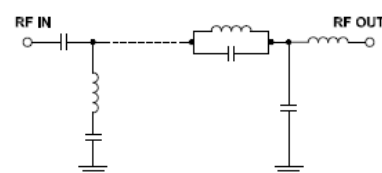
ELECTRICAL SPECIFICATIONS 50Ω @ +25°C

Parameter	Min.	Typ.	Max.	Units
Passband (Loss < 1.5 dB)	110		480	MHz
Centre frequency		230		MHz
Low Band (Loss > 40 dB)	DC		60	MHz
Low Band (Loss > 20 dB)	60		83	MHz
High Band (Loss > 20 dB)	595		900	MHz
High Band (Loss > 40 dB)	900		1200	MHz
Passband VSWR		1.25		(:1)
Stopband VSWR		20		(:1)

Functional Schematic

MAXIMUM RATINGS

Operating Temperature	-40°C to 85°C
Storage Temperature	-55°C to 100°C
RF Power Input	0.5 W



PIN CONNECTIONS

Input	2
Output	9
Not Connected	-
Case Ground	1,3,4,5,6,7,8,10,11,12,13,14