

Frequency Mixer

JYM-30H

Level 17 (LO Power +17 dBm) 2 to 3000 MHz



Generic photo used for illustration purposes only
CASE STYLE: BJ293

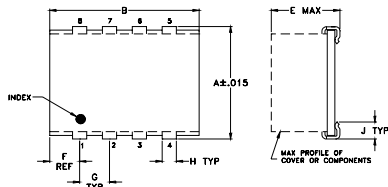
Maximum Ratings

Operating Temperature	-40°C to 85°C
Storage Temperature	-55°C to 100°C
RF Power	200mW
IF Current	40mA
Permanent damage may occur if any of these limits are exceeded.	

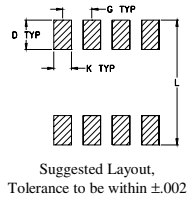
Pin Connections

LO	5
RF	1
IF	7
GROUND	2,3,4,6,8

Outline Drawing



PCB Land Pattern

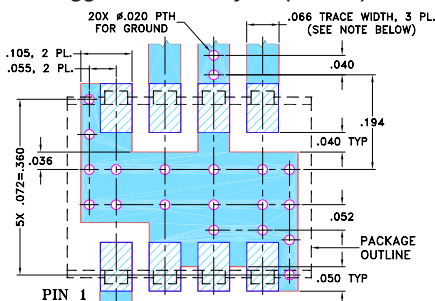


Outline Dimensions (inch/mm)

A	B	C	D	E	F	G
.395	.500	--	.100	.230	.100	.100
10.03	12.70	--	2.54	5.84	2.54	2.54

H	J	K	L	wt
.047	.065	.065	.425	grams
1.19	1.65	1.65	10.80	0.80

Demo Board MCL P/N: TB-259 Suggested PCB Layout (PL-080)



NOTE: 1. TRACE WIDTH IS SHOWN FOR ROGERS RO4350B WITH DIELECTRIC THICKNESS 0.030" ± 0.002"; COPPER: 1/2 OZ. EACH SIDE. FOR OTHER MATERIALS TRACE WIDTH MAY NEED TO BE MODIFIED.
2. BOTTOM SIDE OF THE PCB IS CONTINUOUS GROUND PLANE.

■ DENOTES PCB COPPER LAYOUT WITH SMOBC (SOLDER MASK OVER BARE COPPER)
■ DENOTES COPPER LAND PATTERN FREE OF SOLDERMASK

Notes

A. Performance and quality attributes and conditions not expressly stated in this specification document are intended to be excluded and do not form a part of this specification document.
B. Electrical specifications and performance data contained in this specification document are based on Mini-Circuit's applicable established test performance criteria and measurement instructions.
C. The parts covered by this specification document are subject to Mini-Circuits standard limited warranty and terms and conditions (collectively, "Standard Terms"); Purchasers of this part are entitled to the rights and benefits contained therein. For a full statement of the Standard Terms and the exclusive rights and remedies thereunder, please visit Mini-Circuits' website at www.minicircuits.com/MCLStore/terms.jsp

Features

- wide bandwidth, 2 to 3000 MHz
- good IP3, 24 dBm typ.
- high L-R isolation, 40 dB typ.

Applications

- cellular
- GPS
- satellite distribution
- MMDS

Electrical Specifications

FREQUENCY (MHz)	CONVERSION LOSS (dB)	LO-RF ISOLATION (dB)			LO-IF ISOLATION (dB)			IP3 at center band (dBm)										
		L	M	U	L	M	U											
LO/RF $f_L - f_U$	Mid-Band m \bar{X} σ Max. Total Range Max.	Typ. Min.	Typ. Min.	Typ. Min.	Typ. Min.	Typ. Min.	Typ. Min.	Typ.										
2-3000	4-1400	6.0	.20	8.9	10.6	40	30	40	25	30	25	40	35	30	20	22	15	24

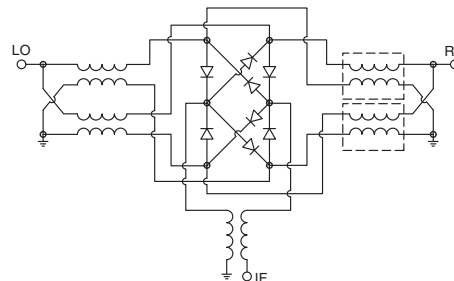
1 dB COMP.: +10 dBm typ.

L = low range [f_L to 10 f_L] M = mid range [10 f_L to $f_U/2$] U = upper range [$f_U/2$ to f_U]
m = mid band [2 f_L to $f_U/2$]

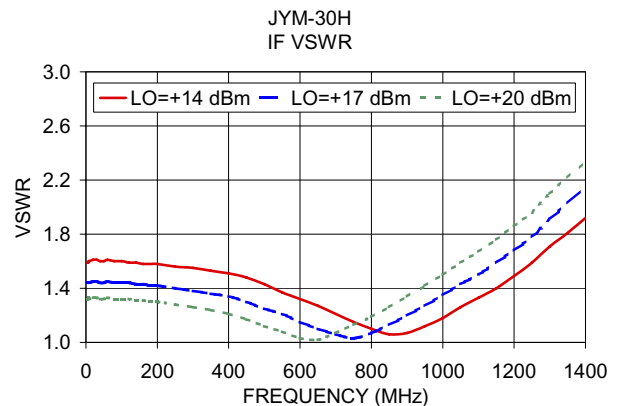
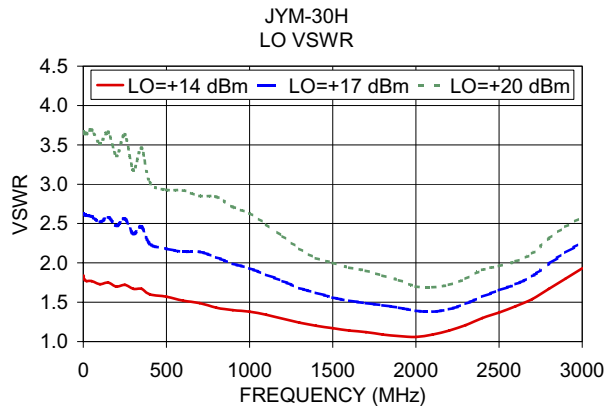
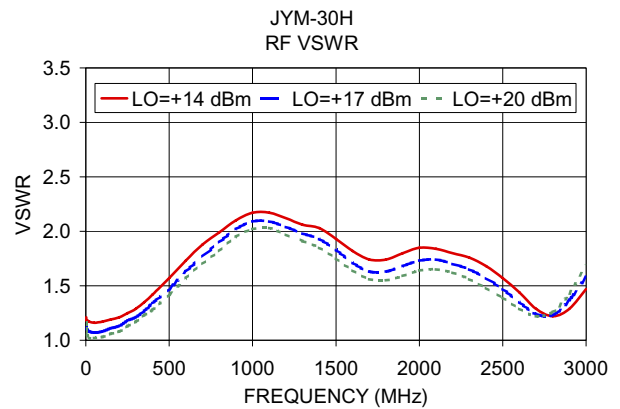
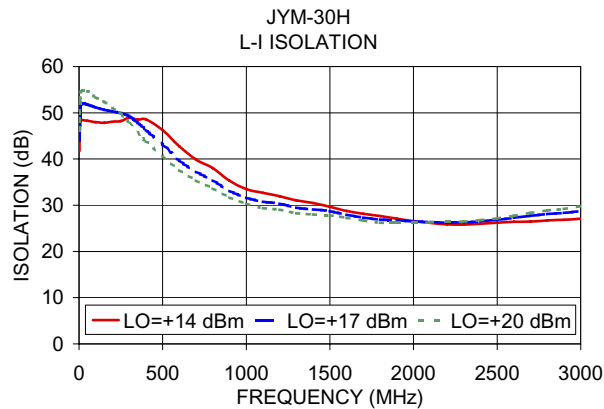
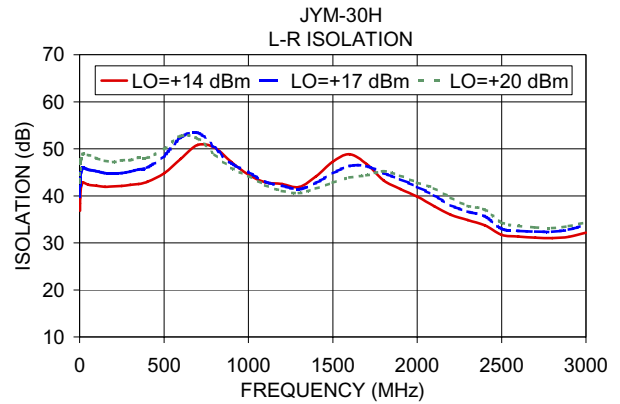
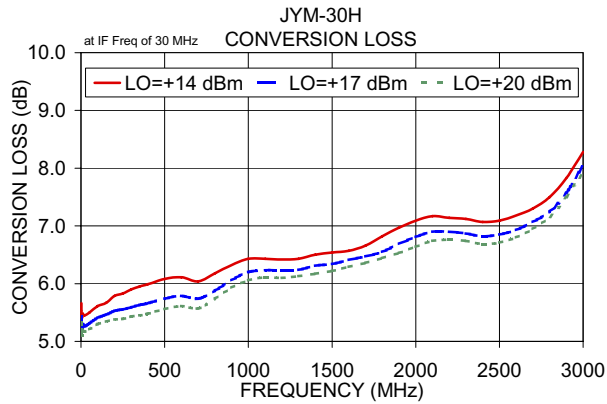
Typical Performance Data

Frequency (MHz)		Conversion Loss (dB)	Isolation L-R (dB)	Isolation L-I (dB)	VSWR RF Port (:1)	VSWR LO Port (:1)
RF	LO	LO +17dBm	LO +17dBm	LO +17dBm	LO +17dBm	LO +17dBm
2.10	32.10	5.44	39.95	43.97	1.16	2.63
4.10	34.10	5.26	42.60	47.96	1.11	2.62
10.10	40.10	5.30	45.22	51.67	1.09	2.61
50.10	80.10	5.31	45.58	51.80	1.07	2.59
100.10	130.10	5.41	45.25	51.16	1.08	2.52
200.10	230.10	5.53	44.76	50.33	1.13	2.47
300.10	330.10	5.59	45.14	49.28	1.21	2.37
400.10	430.10	5.66	45.99	46.27	1.34	2.24
800.10	830.10	5.88	50.23	35.40	1.90	2.07
1000.10	1030.10	6.20	45.07	31.64	2.09	1.93
1200.10	1230.10	6.23	42.15	30.32	2.04	1.77
1500.10	1530.10	6.34	44.76	28.69	1.83	1.56
1800.10	1830.10	6.55	44.84	26.88	1.63	1.46
2000.10	2030.10	6.81	41.91	26.46	1.73	1.39
2200.10	2230.10	6.90	37.99	26.21	1.70	1.41
2400.10	2430.10	6.82	35.70	26.50	1.57	1.57
2500.10	2530.10	6.85	33.01	26.84	1.47	1.65
2600.10	2630.10	6.93	32.55	27.26	1.35	1.73
2800.10	2830.10	7.25	32.37	28.09	1.23	1.99
3000.10	3030.10	8.05	33.83	28.71	1.58	2.26

Electrical Schematic



Performance Charts



Notes

- A. Performance and quality attributes and conditions not expressly stated in this specification document are intended to be excluded and do not form a part of this specification document.
- B. Electrical specifications and performance data contained in this specification document are based on Mini-Circuit's applicable established test performance criteria and measurement instructions.
- C. The parts covered by this specification document are subject to Mini-Circuit's standard limited warranty and terms and conditions (collectively, "Standard Terms"); Purchasers of this part are entitled to the rights and benefits contained therein. For a full statement of the Standard Terms and the exclusive rights and remedies thereunder, please visit Mini-Circuit's website at www.minicircuits.com/MCLStore/terms.jsp