

# Ceramic Low Pass Filter

## LFCG-3700+

50Ω DC to 3700 MHz



Generic photo used for illustration purposes only  
CASE STYLE: GE0805C-2

### The Big Deal

- Good rejection, 44 dB typical
- Rugged, ceramic construction
- Tiny size, 0.079" x 0.049" x 0.037" (0805)
- Excellent power handling, 4.5W

### Product Overview

Mini-Circuits' LFCG-3700+ is an LTCC low pass filter with a passband from DC to 3700 MHz, supporting a variety of applications. This model provides 1.3 dB typical passband insertion loss and provides a very good stopband rejection due to strategically constructed layout with minimal interaction between components. It handles up to 4.5W RF input power and provides a wide operating temperature range from -55 to +125°C. Housed in a tiny 0805 ceramic form factor with wraparound terminations, the filter is ideal for dense PCB layouts and with minimal performance variation due to parasitics.

### Key Features

Feature	Advantages
Ultra-wide stopband	The LTCC lowpass filter provides a very good stopband rejection until 18 GHz suitable for high end applications.
LTCC Construction	Provides repeatable performance in a rugged, ceramic package well suited for tough environments such as high humidity and temperature extremes.
Tiny size (0.079" x 0.049" x 0.037")	Saves space in dense circuit board layouts and minimizes the effects of parasitics.
Excellent power handling, 4.5W	Supports a wide range of system power requirements.
Wrap-around terminations	Provides excellent solderability and easy visual inspection

#### Notes

- A. Performance and quality attributes and conditions not expressly stated in this specification document are intended to be excluded and do not form a part of this specification document.  
B. Electrical specifications and performance data contained in this specification document are based on Mini-Circuit's applicable established test performance criteria and measurement instructions.  
C. The parts covered by this specification document are subject to Mini-Circuits standard limited warranty and terms and conditions (collectively, "Standard Terms"); Purchasers of this part are entitled to the rights and benefits contained therein. For a full statement of the Standard Terms and the exclusive rights and remedies thereunder, please visit Mini-Circuits' website at [www.minicircuits.com/MCLStore/terms.jsp](http://www.minicircuits.com/MCLStore/terms.jsp)



# Low Pass Filter

50Ω DC to 3700 MHz

## LFCG-3700+



Generic photo used for illustration purposes only

CASE STYLE: GE0805C-2

**+RoHS Compliant**

The +Suffix identifies RoHS Compliance. See our web site for RoHS Compliance methodologies and qualifications

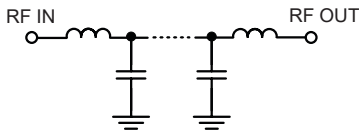
### Features

- Low loss, 1.3 dB typical
- Good rejection, 44 dB typical
- Excellent power handling, 4.5W
- Extremely small size 0805 (0.079" x 0.049" x 0.037")
- Temperature stable
- LTCC construction

### Applications

- Military Radar applications
- Test and measurement
- Telecommunications & broadband wireless applications
- Public safety communication
- Satcom modems

### Functional Schematic



### Electrical Specifications<sup>1,2</sup> at 25°C

Parameter		F#	Frequency (MHz)	Min.	Typ.	Max.	Unit
Pass Band	Insertion Loss	DC-F1	DC - 3700	—	1.3	2.1	dB
	Freq. Cut-Off*	F2	4360	—	3.0	—	dB
	Return Loss	DC-F1	DC - 3700	—	13	—	dB
Stop Band	Rejection Loss	F3-F4	5500 - 6100	20	43	—	dB
		F4-F5	6100 - 8200	35	44	—	dB
		F5-F6	8200 - 10000	25	37	—	dB
		F6-F7	10000 - 18000	—	17	—	dB

1 DC de-coupling capacitors are required in Applications where DC voltage and/or current is present at either input or output ports. Please contact Mini-Circuits for alternatives if DC pass from IN-OUT is required.

2 Measured on Mini-Circuits Characterization Test Board TB-LFCG-3700+

\* Typically, a ±5% frequency deviation from the stated value may occur on a unit-to-unit basis.

#### Maximum Ratings

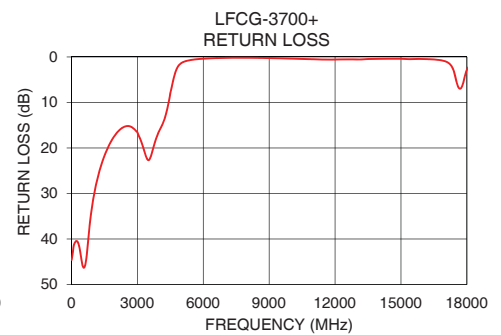
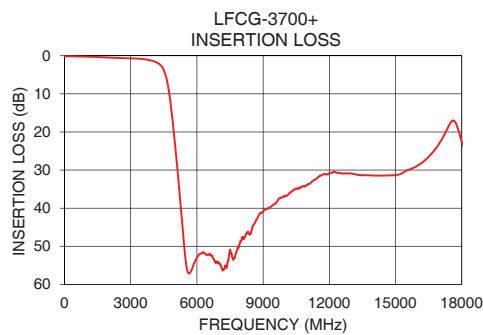
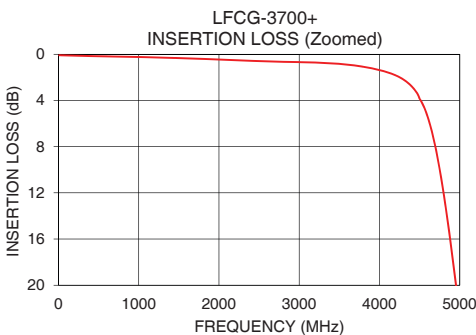
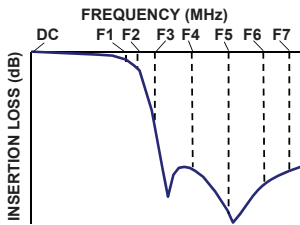
Operating Temperature	-55°C to 125°C
Storage Temperature	-55°C to 125°C
RF Power Input*	4.5W max. @25°C

\*Passband rating, derate linearly to 1W at 125°C ambient  
Permanent damage may occur if any of these limits are exceeded.

### Typical Performance Data at 25°C

Frequency (MHz)	Insertion Loss (dB)	Return Loss (dB)
10	0.08	44.60
100	0.10	41.62
300	0.14	40.78
500	0.17	45.68
1000	0.24	31.05
3000	0.68	16.53
3700	0.98	20.46
4360	2.51	11.46
4500	3.86	7.98
5000	22.68	1.35
5150	31.81	1.01
5500	54.18	0.62
6000	53.06	0.38
6100	52.11	0.35
8000	48.71	0.18
8200	47.24	0.19
10000	36.83	0.37
12000	30.80	0.58
15000	31.31	0.41
18000	22.63	2.83

### Typical Frequency Response



#### Notes

- Performance and quality attributes and conditions not expressly stated in this specification document are intended to be excluded and do not form a part of this specification document.
- Electrical specifications and performance data contained in this specification document are based on Mini-Circuit's applicable established test performance criteria and measurement instructions.
- The parts covered by this specification document are subject to Mini-Circuits standard limited warranty and terms and conditions (collectively, "Standard Terms"); Purchasers of this part are entitled to the rights and benefits contained therein. For a full statement of the Standard Terms and the exclusive rights and remedies thereunder, please visit Mini-Circuits' website at [www.minicircuits.com/MCLStore/terms.jsp](http://www.minicircuits.com/MCLStore/terms.jsp)

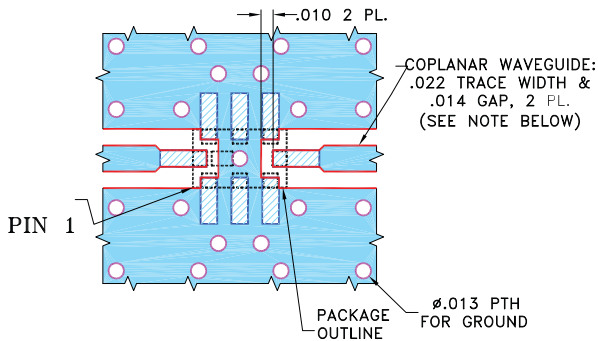


## Pad Connections

INPUT	8
OUTPUT	4
GROUND	1,2,3,5,6,7

Product Marking: UM

Demo Board MCL P/N: TB-LFCG-3700+  
Suggested PCB Layout (PL-429)

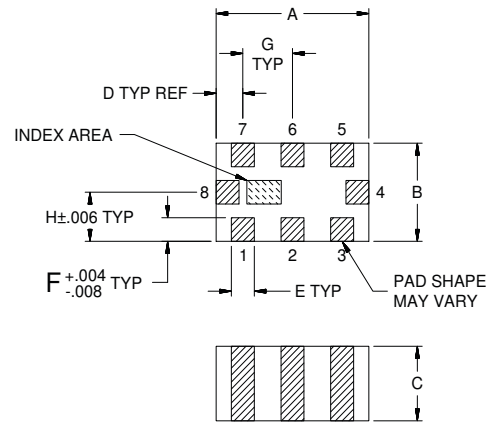


### NOTES:

1. COPLANAR WAVEGUIDE IS SHOWN FOR ROGERS R04350B WITH DIELECTRIC THICKNESS  $.010" \pm .001"$ . COPPER: 1/2 OZ. EACH SIDE. FOR OTHER MATERIALS TRACE WIDTH AND GAP MAY NEED TO BE MODIFIED.
2. BOTTOM SIDE OF THE PCB IS CONTINUOUS GROUND PLANE.

- DENOTES PCB COPPER LAYOUT WITH SMOBC (SOLDER MASK OVER BARE COPPER).
- DENOTES COPPER LAND PATTERN FREE OF SOLDER MASK.

## Outline Drawing



## Outline Dimensions (inch / mm)

A	B	C	D	E	F	G	Wt.
.079	.049	.037	.014	.012	.012	.026	grams
2.00	1.25	0.95	0.35	0.30	0.30	0.65	.008

Note: Please refer to case style drawing for details

### Notes

- A. Performance and quality attributes and conditions not expressly stated in this specification document are intended to be excluded and do not form a part of this specification document.  
 B. Electrical specifications and performance data contained in this specification document are based on Mini-Circuit's applicable established test performance criteria and measurement instructions.  
 C. The parts covered by this specification document are subject to Mini-Circuits standard limited warranty and terms and conditions (collectively, "Standard Terms"); Purchasers of this part are entitled to the rights and benefits contained therein. For a full statement of the Standard Terms and the exclusive rights and remedies thereunder, please visit Mini-Circuits' website at [www.minicircuits.com/MCLStore/terms.jsp](http://www.minicircuits.com/MCLStore/terms.jsp)