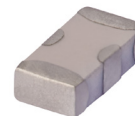


Ceramic Low Pass Filter

50Ω DC⁽¹⁾ to 1700 MHz

NON-CATALOG

LFCN-1700



CASE STYLE: FV1206

Maximum Ratings

Operating Temperature	-55°C to 100°C
Storage Temperature	-55°C to 100°C
RF Power Input*	10W max. at 25°C

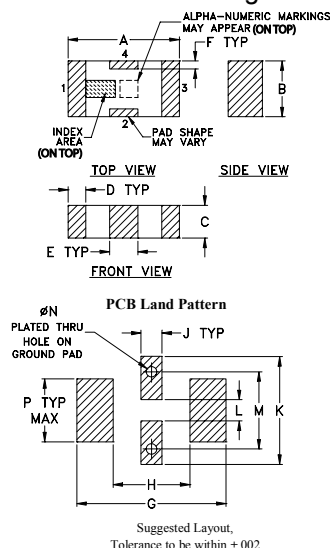
* Passband rating, derate linearly to 3.5W at 100°C ambient. Permanent damage may occur if any of these limits are exceeded.

Pin Connections

RF IN	1
RF OUT	3
GROUND	2,4

Product Marking: F3

Outline Drawing

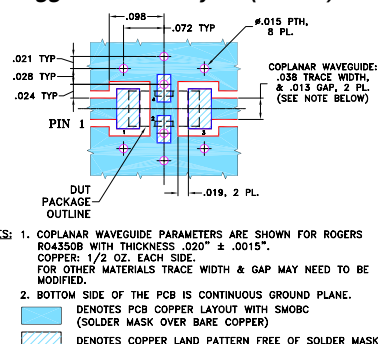


Outline Dimensions (inch mm)

A	B	C	D	E	F	G
.126	.063	.037	.020	.032	.009	.169
3.20	1.60	0.94	0.51	0.81	0.23	4.29

H	J	K	L	M	N	P	W
.087	.024	.122	.024	.087	.012	.071	grams
2.21	0.61	3.10	0.61	2.21	0.30	1.80	.020

Demo Board MCL P/N: TB-270 Suggested PCB Layout (PL-137)



Notes

- A. Performance and quality attributes and conditions not expressly stated in this specification document are intended to be excluded and do not form a part of this specification document.
- B. Electrical specifications and performance data contained in this specification document are based on Mini-Circuits' applicable established test performance criteria and measurement instructions.
- C. The parts covered by this specification document are subject to Mini-Circuits standard limited warranty and terms and conditions (collectively, "Standard Terms"); Purchasers of this part are entitled to the rights and benefits contained therein. For a full statement of the Standard Terms and the exclusive rights and remedies thereunder, please visit Mini-Circuits' website at www.minicircuits.com/MCLStore/terms.jsp

Features

- excellent power handling, 10W
- small size
- 7 sections
- temperature stable
- LTCC construction
- protected by U.S Patent 6,943,646

Applications

- harmonic rejection
- VHF/UHF transmitters/receivers
- lab use

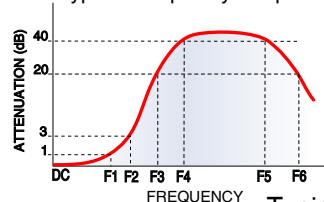
Electrical Specifications^(1,2) at 25°C

Parameter	F#	Frequency (MHz)	Min.	Typ.	Max.	Unit
Pass Band	Insertion Loss	DC-F1	DC-1700	—	—	1.2 dB
	Freq. Cut-Off	F2	2050	—	3.0	dB
	VSWR	DC-F1	DC-1700	—	1.2	:1
Stop Band	Rejection Loss	F3	2375	20	—	dB
		F4-F5	2500-6500	—	30	dB
		F6	7000	—	20	dB
	VSWR	F3-F6	2375-7000	—	20	:1

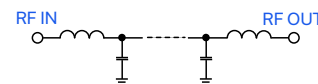
(1) In Application where DC voltage is present at either input or output ports, coupling capacitors are required. Alternatively, if DC pass IN-OUT is required, Mini-Circuits' "D" suffix version of this model will support DC IN-OUT, and provide >100 MOhm isolation to ground.

(2) Measured on Mini-Circuits Characterization Test Board TB-270.

Typical Frequency Response

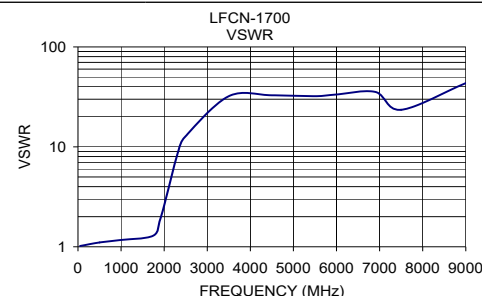
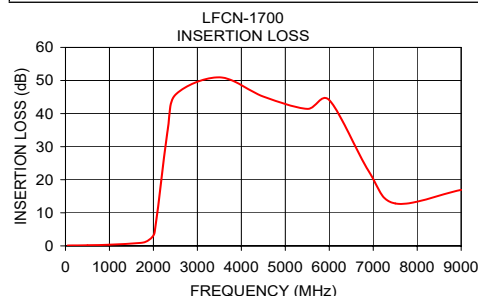


Electrical Schematic



Typical Performance Data at 25°C

Frequency (MHz)	Insertion Loss (dB)	VSWR (:1)
50.00	0.13	1.02
500.00	0.20	1.10
1000.00	0.36	1.17
1740.00	0.97	1.29
1900.00	1.85	1.83
2025.00	4.02	2.84
2325.00	35.00	8.99
2500.00	45.69	12.80
3500.00	50.96	32.18
4500.00	45.13	32.79
5500.00	41.41	32.18
6000.00	44.06	33.42
6900.00	22.52	35.46
7500.00	12.82	23.49
9000.00	16.93	43.44



Mini-Circuits®

www.minicircuits.com P.O. Box 350166, Brooklyn, NY 11235-0003 (718) 934-4500 sales@minicircuits.com

REV. M
ECO-024600
LFCN-1700
ED-6469/4
MCL NY
250310