

Termination DIN

50Ω

DC to 2000 MHz

LOUIS-50



Generic photo used for illustration purposes only

CASE STYLE: LL987

Connectors	Model
DIN Male w/retaining sleeve	LOUIS-50

+RoHS Compliant

The +Suffix identifies RoHS Compliance. See our web site for RoHS Compliance methodologies and qualifications

Maximum Ratings

Operating Temperature -40°C to 85°C

Storage Temperature -55°C to 100°C

Permanent damage may occur if any of these limits are exceeded.

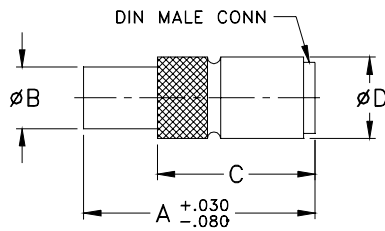
Features

- wideband coverage, DC to 2000 MHz
- return loss, 33 dB typ. up to 1000 MHz and 27 dB typ. up to 2000 MHz

Applications

- cellular communications
- satellite communications
- test set-up

Outline Drawing



Electrical Specifications (T_{AMB}=25°C)

FREQUENCY (MHz)	IMPEDANCE (OHMS)	RETURN LOSS (dB) MIN.			POWER RATING* (W)
		DC-0.5 GHz	DC-1 GHz	DC-2 GHz	
DC-2000	50	28	28	21	0.125

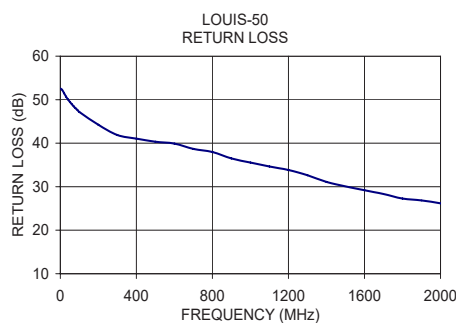
*Up to 70°C, derate linearly to 80% at 85°C

Outline Dimensions (inch/mm)

A	B	C	D	wt
0.94	0.25	0.64	0.33	grams
23.88	6.35	16.26	8.38	6.50

Typical Performance Data

Frequency (MHz)	Return Loss (dB)
1.00	52.55
20.00	51.45
40.00	50.07
70.00	48.50
100.00	47.17
300.00	41.88
500.00	40.34
700.00	38.69
1000.00	35.56
1200.00	33.84
1300.00	32.63
1500.00	30.08
1700.00	28.32
1900.00	26.84
2000.00	26.18



Notes

- A. Performance and quality attributes and conditions not expressly stated in this specification document are intended to be excluded and do not form a part of this specification document.
 B. Electrical specifications and performance data contained in this specification document are based on Mini-Circuit's applicable established test performance criteria and measurement instructions.
 C. The parts covered by this specification document are subject to Mini-Circuits standard limited warranty and terms and conditions (collectively, "Standard Terms"); Purchasers of this part are entitled to the rights and benefits contained therein. For a full statement of the Standard Terms and the exclusive rights and remedies thereunder, please visit Mini-Circuits' website at www.minicircuits.com/MCLStore/terms.jsp



www.minicircuits.com P.O. Box 350166, Brooklyn, NY 11235-0003 (718) 934-4500 sales@minicircuits.com

REV. C
 M151107
 LOUIS-50
 EDU-0283
 URJ/RS/CP
 200904